

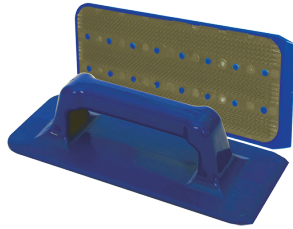
## Housekeeping Tools



### WASH WALL FRAME

**PB00CRE03AG · EACH**

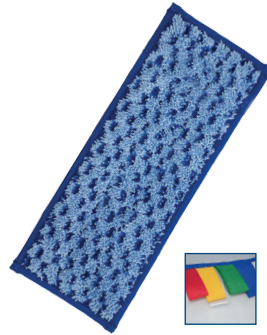
9 X 4 inch mop frame with swivel. Hook and loop backing. Blue in color. Fits Mop Handle. Use with Scrub Mop and Wave Mop.



### TROWEL

**PB00CRE03AF · EACH**

9 X 4 inch hand trowel with handle and scrapper edge. Hook and loop backing. Blue in color. Use with Scrub Mop and Wave Mop.



### SCRUB MOP

**PB00CRE03AH · EACH**

5 X 10 inch scrubber pad for low to medium soil on grimy surfaces, soap scum and grease. Its short loop microfiber and poly microfiber square block scrubber pads make quick work of tough messes. Hook & loop backing. Color coded tabs. Use with Wash Wall Frame and Trowel.



### WAVE MOP

**PB00CRE03AI · EACH**

5 X 10 inch loop pile mop pad for low to heavy soil levels and all applications. Use in bathrooms, and heavier soiled areas such as grouted tile. Wave material microfiber pad with hook & loop backing. Trio Split Technology. Use with Wash Wall Frame and Trowel.



### MICROFIBER CLOTHS (12/PACK)

**PB00CRE03AA · BLUE**  
**PB00CRE03AC · GREEN**

**PB00CRE03AB · RED**  
**PB00CRE03AD · YELLOW**

16 X 16 inch, 300 gram weight. Double stitched edging with polytape ribbing. Heavy-duty microfiber cleaning cloths are made with a unique manufacturing process providing exceptional life, saving you both time and money. 100% microfiber.



### MICROFIBER DUSTER

**PB00CRE03AJ · EACH**

Duster made with Microfiber material and web backing for easy wash out. Extension handle (34" to 51"). Head is removable and launderable. Trio Split Technology.



### MOP HANDLE

**PB00CRE03AE · EACH**

Aluminum telescopic mop handle with gray grip, 39.5 to 72 inches in length. Use with Wash Wall Frame.