



PROBLEND™



Professional Cleaning Solutions

Table of Contents

●	warewash	3	
	High Temperature Systems	4	
	All Temperature Systems.....	5	
	Presoaks	5	
	Pot and Pan	6	
	Sanitizers and Disinfectants.....	6	NEW
	Cooking Surfaces	7	
	Cleaners and Degreasers	7	
	RTU Products	8	
	Specialty Cleaners	9	
	Floor Cleaners.....	10	
	ASPIRE Ultra Warewash System	10	
●	workforce	11	NEW
●	hand care	13	
	Hand Care Cartridge System	14	NEW
	Hand Sanitizers	15	
	Hand Soaps.....	15	NEW
	Amenities	16	
●	housekeeping	17	
	All Purpose Cleaners	18	
	Restroom Care.....	18	
	Polishes	19	
	Glass Cleaners.....	19	NEW
	Air Care.....	19	
	Carpet Care.....	19	
	CleanSight.....	20	NEW
	Protect24.....	21	NEW
	GALAXY Dispensing System.....	22	
	Stay Confident	25	
●	laundry	27	
	Detergent Boosters.....	28	
	Detergents.....	28	
	Destainers.....	30	
	Sour/Softener.....	30	
	Sour.....	30	
	Softeners	31	
	Sizing.....	31	
	Reclaim.....	31	
	Pre-Spotters	32	
	Marine Division.....	33	NEW
	CleanSight.....	36	NEW
●	equipment & tools	37	
	SPARKOZ Autonomous Cleaning Robots....	38	NEW
	Dishmachines	40	



BEYOND CLEAN.

ProBlend is a brand of cleaning solutions that goes BEYOND CLEAN... for organizations that buy it, sanitation professionals and service technicians that use it, and customers and guests that enjoy the many benefits of cleaner, healthier environments.

Serving hospitality, education, food service, janitorial, Building Service Contractors (BSCs), cruise industry, and municipalities, ProBlend uniquely offers a total commercial cleaning solution program. From high performance cleaning and sanitation to reliable, cost-effective systems and equipment, your authorized ProBlend dealer or service provider can recommend the perfect blend of professional ProBlend products to meet the evolving needs of your business today.

legend



Environmentally Friendly Products



PROBLEND™



warewash

Convenience. Confidence. Health.

ProBlend's line of complete warewash cleaning solutions removes the hassle from kitchen and facility cleaning and sanitation, offering employees a healthier and safer work environment and guests a worry-free dining experience.



Endorsed by **CHEF ZACK POLANI**

With a career spanning over thirty years, Chef Zack Polani honed his craft at the prestigious Le Cordon Bleu in Paris, France and has become a true master in delivering culinary perfection and excellence. The Luxury Palace Group community relishes the brilliance of his culinary creations, cherishing each moment spent savoring his exquisite dishes. Through his relentless pursuit of perfection and a genuine passion for the culinary arts, Chef Polani stands as a beacon of culinary brilliance, continually setting new standards of excellence that leave a lasting impression on all fortunate enough to experience his extraordinary talents.

"ProBlend, LabTech, Warewash, & Workforce are in all my kitchens as every successful kitchen starts in the dishwasher & ends in the dishwasher."

High Temperature Systems



CRYSTAL

20740
4/1 GAL • 5 GAL

Chlorinated High Temp Detergent.

Liquid detergent with high alkalinity and extra destaining properties. It contains polymeric dispersants to work scale free in water with high solids.

SOLID DISPENSER

PSD Powder Solid Dosing

- All-in-One-solution for commercial dishwashers for dosing detergent.



ENCAP DISH

13920
4/10 LB

Encapsulated Dishwashing Detergent.

Powdered detergent contains chlorine, chelators and dispersing chemicals, which bonded together offer excellent results and use cost. Encapsulated to provide a closed loop detergent system.



SOLID FORCE

21195
4/8 LB

Solid Dishwashing Detergent.

Premium high temperature dishmachine detergent provides excellent cleaning ability, free rinsing and use cost. For use in solid dispensing equipment.



RINSE FREE

14409
4/1 GAL • 5 GAL

Hard Water Rinse Aid. Creates sparkling spot-free results under challenging conditions. Defoaming and sheeting agents accelerate dry time by reducing the surface tension on tableware and aids in defoaming wash tanks. *For use in HT and LT applications.*



SOLID FORCE NP

21198
4/8 LB

Solid Non-Phosphate Detergent.

Premium high temperature dishmachine detergent provides excellent cleaning ability, free rinsing and use cost. For use in solid dispensing equipment.



SPARKLE

21945
4/1 GAL • 5 GAL

Premium Dishwashing Rinse.

Concentrated liquid drying agent for hard to soft water. It contains defoamers, chelating agents, mild acid and is highly active. Leaves glasses and flatware spotless. *Great in All Temp Systems too!*



SOLID METAL POWER

21277
4/8 LB

Solid Metal Safe Dishwashing Detergent.

High temperature detergent that is gentle and safe for soft metals including aluminum and pewter. Excellent cleaning, free rinsing and use cost. For use in solid dispensing equipment.



All Temperature Systems



LT DETERGENT

18138
4/1 GAL • 5 GAL

All Temperature Detergent. Economically formulated, alkaline dishmachine detergent provides the best results when used in medium to soft water.



HW LT DETERGENT

18145
4/1 GAL • 2.5 GAL • 5 GAL

Hard Water All Temperature Detergent. Specifically designed for hard water applications HW LT Detergent keeps your dishes clean and sparkling for great customer satisfaction.



LT RINSE AID

20733
4/1 GAL • 2.5 GAL • 5 GAL

All Temperature Rinse. Economical anti-spotting drying agent and anti-foamer breaks down the surface tension of water on glasses and silverware. The result is sheeting of rinse water and no water spots.



RINSE FREE

14409
4/1 GAL • 5 GAL

Hard Water Rinse Aid. Creates sparkling spot-free results under challenging conditions. Defoaming and sheeting agents accelerate dry time by reducing the surface tension on tableware and aids in defoaming wash tanks. *For use in HT and LT applications.*



LT SAN

05205
4/1 GAL • 2.5 GAL • 5 GAL

All Temperature Sanitizer. Concentrated and stabilized 10% sodium hypochlorite solution, blended to sanitize food service glassware, flatware, dishes, and utensils in commercial dishmachines. EPA Registered.

Presoaks



OXY COMPLETE

14727
2/5 LB

Powder Presoak & Oxygen Destainer. This powdered formula effectively removes stains from plasticware, coffee cups, serving utensils, tea urns and cutting boards.



SILVER BRILLIANT

18340
4/1 GAL • 5 GAL

Liquid Flatware Soak. Enhanced performance silver and flatware brightening agent can be used to soak flatware prior to being washed. It keeps tarnish from forming and improves sheeting.



SOLID SILVER BRITE

11034
2/8 LB

Solid Flatware Soak. Mild alkaline formulation for presoaking and detarnishing silverware. It attacks residual soil on silver and flatware, digesting it and insuring its removal. Works well in all water conditions.



LIQUID DISPENSERS

DSPset 2602 - For Rinse & 2 Detergents
Compact Duo - For Rinse & Detergent

Pot and Pan



BAR GLASS

11428
4/1 GAL

Manual Bar Glass Detergent. Low foaming manual glassware detergent specifically formulated to rinse freely and prevent water spotting. Loosens dried on soils, including lipstick. Effective in all water conditions. Floral fragrance.



CLEAN PRO POT & PAN

19865
4/1 GAL • 5 GAL

All Purpose Pot and Pan Detergent. This economical detergent produces thick, rich suds that penetrate and emulsify food soils and grease. Can be used in all water conditions. Baby powder fragrance.



SAPPHIRE

21000
2/1 GAL • 4/1 GAL • 2.5 GAL • 5 GAL

Premium Pot and Pan Detergent. Phosphate free pot and pan detergent produces long lasting suds. Sapphire is tough on soils yet gentle to skin. Works well in all water conditions. Pure clean fragrance.



SAPPHIRE POWER SPRAY

11187
6/22 OZ

Foaming Hand Dish Detergent. Quickly removes grease and food residue, delivering the power of a traditional soak in just minutes. This ready to use formula only needs water for rinsing. Citrus fragrance. *Excellent laundry prespotter too!*



SOLID CLEAN

21280
2/5 LB

Solid Pot and Pan Detergent. Formulation is 100% active. Solid Clean is an excellent foamer, quickly cuts grease and tough soils and is mild to skin. Floral fragrance.

Sanitizers and Disinfectants



DD 5000

13546
2/1 GAL • 4/1 GAL • 2.5 GAL • 5 GAL

Third Compartment Sink Sanitizer. Effectively cleans, sanitizes, and disinfects surfaces in hospitals, nursing homes, schools, food handling and processing areas, and institutional kitchens. EPA Registered.



DSQ 10

13960
2/1 GAL • 4/1 GAL • 5 GAL

Third Compartment Sink Sanitizer. Disinfectant, fungicide, mildewstat and virucide designed for hospitals, nursing homes, hotels & motels, institutional, industrial, and institutional kitchen use. EPA Registered.



GUARDIAN

11186
6/1 QT

RTU Food Contact Sanitizer, Disinfectant & Virucide. Effective sanitizer for food contact surfaces in schools, restaurants, food handling and processing areas, bar and institutional kitchens. EPA Registered.



3-SINK DISPENSERS

ProSink R - Available for 1 or 2 products





Cooking Surfaces

Cleaners and Degreasers



ELIMINATOR PLUS

27180
6/1 QT • 4/1 GAL

Oven Cleaner. Premium oven cleaner formulated with a blend of high alkaline, solvent based, organic detergents for dissolving heavy soils. It cleans fat, oil and grease from ovens, grills, stoves and hard surfaces. Orange fragrance.



CITRA SOL

RD102
4/1 GAL

All Purpose Cleaner and Degreaser. Removes fat and petroleum based soils. Bold citrus fragrance.



GREASE EASE

14710
10/1.5 LB

Deep Fat Fryer Cleaner. Concentrated powder alkaline detergent formulation quickly emulsifies fat and grease in deep fryers. It aggressively removes grease and heavy oil based soils from kettle interior and exterior surfaces.



HD PRIDE CLEANER

15770
4/1 GAL

Heavy-Duty Degreaser. Alkaline and butyl solvent based degreaser penetrates and removes the toughest soils quickly and easily. HD Pride Cleaner contains alkalis, sequestrants and wetting agents for powerful heavy-duty degreasing.



HT GRILL CLEANER

15210
6/1 QT

Flat Top Grill Cleaner. Removes grease, fat and carbon buildup from hot surfaces, such as grills and griddles. Works quickly and easily saving time and labor.



LAVENDER EXPRESS

16600
4/1 GAL • 5 GAL

Multi-Purpose Cleaner. Boldly fragranced Lavender Express is a special multi-purpose cleaner and degreaser formulated for removing soil, grease and grime from any washable surface.



NON-CAUSTIC OVEN & GRILL CLEANER

PB00MAG02BA • 6/1 QT

Ultra Concentrated Ready To Use Oven Cleaner. Dissolves heavy soils instantly removing carbonized buildup, fat, oil and grease found on surfaces where high heat is present. Safe on aluminum. Minimal odor.

RTU Products

Quick Cleaning Solutions

Air Care



EXTREME CANNABIS ODOR OUT

PB0011063AA · 6/1 QT

Ready to Use Neutralizer for Cannabis Odors. Penetrates to permanently destroy the “skunk-like” odor of marijuana instantly.



EXTREME SMOKE ODOR OUT

PB0011062AA · 6/1 QT

Ready to Use Smoke & Pet Urine Odor Neutralizer. Penetrates porous surfaces neutralizing cigarette, cigar and pipe odors instantly. Also eliminates odors from pet urine.



RACHAEL TOLLIVER RTU LINEN FRESH

PB0027258AA · 6/1 QT

Ready to Use Fabric Refresher & Softener. Refreshes fabrics and eliminates odors at the source including smoke, mildew, pet odors and urine. Relaxing scent of lavender, jasmine and a hint of apple.

Disinfectants



PROTECT24

PB0004629AA · 6/1 QT

24 Hour Sanitizer/Disinfectant. Provides cleaning performance together with disinfection of harmful bacteria and viruses including SARS-CoV-2. Eliminates 99.9% of bacteria for 24 hours. Ready to use. Residue free finish.



NEW

GUARDIAN

PB001186AA · 6/1 QT

RTU Food Contact Sanitizer, Disinfectant & Virucide. Effective sanitizer for food contact surfaces in schools, restaurants, food handling and processing areas, bar and institutional kitchens. EPA Registered.

Cleaners



CLEAR VIEW RTU

PB0023140AA · 6/1 QT

Ready To Use Glass & Hard Surface Cleaner. Can be used for cleaning glass, stainless steel, plastic, vinyl, and tile. Use for a spotless streak-free shine on most hard surfaces.



ELIMINATOR PLUS

PB0027180AA · 6/1 QT

Oven Cleaner. Premium oven cleaner formulated with a blend of high alkaline, solvent based, organic detergents for dissolving heavy soils. It cleans fat, oil and grease from ovens, grills, stoves and hard surfaces. Orange fragrance.



ERASER

PB0012690AB · 6/1 QT

Mold & Mildew Stain Remover and Bathroom Cleaner. Powerful non-acid cleaner and destainer removes challenging stains including mildew, food stains, and discoloration. Contains chlorine bleach. Floral fragrance. Ready to use.



NEW

GLASS GUARD PRO

PB0011192AA · 6/1 QT

Ready To Use Glass Cleaner & Protectant. Fog-free, residue repelling, and water sheet formula keeps surfaces clean longer. Leaves a streak free shine on glass, mirrors, stainless steel and most hard surfaces.



HT GRILL CLEANER

PB0015210AA · 6/1 QT

Flat Top Grill Cleaner. Removes grease, fat and carbon buildup from hot surfaces, such as grills and griddles. Works quickly and easily saving time and labor.

Specialty Cleaners



CHLOR CLEAN

12310
4/1 GAL

High-Foaming Chlorinated Cleaner. Liquid alkaline cleaner rapidly removes protein, fat, and carbohydrate soils on equipment and hard surfaces. Use in meat rooms and bakeries. Phosphate free. *Great alkaline floor cleaner!*



CLEAN FREEZE

23330
4/1 GAL

Freezer Cleaner. Low foam alkaline cleaner formulated for use in refrigerated and freezer environments on a broad range of surfaces and most metals. Provides rapid penetration of dirt, grease and protein soils.



ENHANCE

PB00QUE01AA · 12/14.5 OZ

Food Grade Stainless Steel Cleaner. Aerosol spray. Oil based cleaner brightens, polishes and protects stainless steel by forming a shield that resists watermarks and rust. Also great for aluminum, chrome, Formica®, porcelain and ceramic tile. Lemon fragrance.



GREASE FREE

10661
4/1 GAL · 5 GAL

Drain and Grease Trap Treatment. Designed to accelerate the bioremediation process, Grease Free controls the grease and odors found in drain lines and grease traps with its bacteria that digests grease and gives off CO2 and water as byproducts. Great for use around urinals to get rid of bodily fluid odors. Neutrolem fragrance.



PRODUCESHIELD+

05089
2.5 GAL

Ultra Concentrated Fruit & Vegetable Wash. No-Rinse produce wash solution enhances food safety, reducing spoilage and improving textural characteristics for processed fruits and vegetables. A proprietary blend of all GRAS ingredients.



SCALAWAY

21020
4/1 GAL

Hard Water Remover. Concentrated non-foaming liquid lime scale remover. For use in dishmachines and to descale steam tables, stainless steel and nonporous kitchen surfaces not damaged by acidic solutions. Removes rust.

PROBLEND™

*Electronic service reporting
across the globe.*

Get the ProBlend experience

WAREWASH

- Safe Food Handling Report
- Warewash Service Report

HOUSEKEEPING

- Guest Room Inspection Report

LAUNDRY

- Laundry Service Report

GENERAL

- Inventory Order Report
- ProBlend Order Form
- Bill of Lading

Floor Cleaners



BIO FORCE

11680
4/1 GAL

Heavy-Duty Floor Cleaner. For commercial kitchens where concrete, grout and quarry tile floors make for tough work. Bio Force helps improve traction and as an added bonus, helps control odors. Neutroleum fragrance.



DAILY CLEANER & DEGREASER

21150
2/1 GAL • 4/1 GAL • 2.5 GAL • 5 GAL

Hard Surface Floor Cleaner. Use as the first line of defense in the battle against slippery floors. This hard surface floor cleaner greatly improves surface traction, reduces the occurrence of polymerization, when used daily, and leaves surfaces residue free.



EVO FLOOR CLEANER

BIO23
4/1 GAL

Microbial Floor Cleaner & Drain Maintainer. Delivers superior floor cleaning, odor control, drain and trap maintenance, environmental benefits and flexibility. Effectively removes the food sources of fruit flies and controls odors in dumpsters. Fresh fragrance.



FLOOR TOUCH

18570
4/1 GAL • 5 GAL

All Purpose Neutral Floor Cleaner. Cleans oil, grease, grime, dirt, inks, and most other soils. Will not remove or harm floor finishes. Citrus fragrance.



GALAXY-41 ENVIRO MOP

BIO23
2/1 GAL

Microbial Floor Cleaner. Everyday use floor cleaner and drain maintainer. Delivers superior floor cleaning, odor control, drain and trap maintenance, environmental benefits and flexibility. Effectively removes the food sources of fruit flies. Fresh fragrance.



PROBLEND™

ASPIRE

ASPIRE - ANDRON

27261
2/1 GAL

Ultra Concentrated Dishmachine Detergent. Designed for all temperature dishmachines. This product is highly active and for heavy-duty use in medium to hard water conditions.



ASPIRE - SPONDREL

27262
2/1 GAL

Ultra Concentrated Drying Agent. Designed for all temperature dishmachines. It defoams and breaks down the surface tension of water at high dilutions.



Safe Link Closed Loop Chemical Management System for easy use of chemicals and change-out

Features & Benefits:

- Minimizes operational and shipping costs
- Concentrates allow for more storage capacity
- Consistent measuring for excellent cleaning results and use cost
- Super concentrated formulations for efficiency and sustainability
- Excellent results in hard water conditions

Over **2X MORE** concentrated than regular warewash systems





PROBLEND™



workforce®

Specialty. Service. Solutions.

Workforce™ chemicals are designed for service technicians who need specialty cleaning and degreasing solutions for the equipment they repair and service. Whether used in the field or sold at your parts counter, the Workforce™ foodservice and hospitality line is a force to be reckoned with.



IT'S TIME TO
Reimagine Clean

The Workforce® brand is under license and partnership with Magnus®.



OVEN REVIVE (Liquid)

PB00MAG02BC • 2.5 GAL

Combi-Oven Detergent. Revolutionary formula that quickly emulsifies grease and food particles to leave your oven sparkling clean in one cycle. Designed for use in combi-ovens with an automatic cleaning system. Can also be used as a spot cleaner to pre-treat heavy-duty soils with a manual sprayer. Ready to use formula.



OVEN REVIVE (Tablets)

PB00MAG02AZ • 50 TABLETS

Ultra Concentrated Combi-Oven Detergent Tablets. Designed exclusively for automatic systems in combi-ovens. This system will extend the life of your combi-oven and keep the interior looking new.



OVEN SHIELD

PB00MAG02BB • 2.5 GAL

Combi-Oven Rinse Aid. This advanced formula helps reduce lime scale build-up and ensures maximum rinse action for quick drying. Designed for use in combi-ovens with an automatic cleaning system. Ready to use formula.



SHIELD TAB

COMING SOON • 50 TABLETS

Combi-Oven Hybrid Cleaner-Descaler. Provides consistent, everyday maintenance for combination ovens to keep the oven interior fresh, support reliable steam performance, and reduce the need for more intensive maintenance cycles. Regular use helps maintain both hygiene and overall oven efficiency.



NON-CAUSTIC OVEN & GRILL CLEANER

PB00MAG02BA • 6/1 QT

Ultra Concentrated Ready To Use Oven Cleaner. Dissolves heavy soils instantly removing carbonized buildup, fat, oil and grease found on surfaces where high heat is present. Safe on aluminum. Minimal odor.



OVEN DESCALER

COMING SOON • 50 TABLETS

Combi-Oven Heavy-Duty Descaler. Powerful, targeted descaler for deep, periodic maintenance on combination ovens. It dissolves stubborn lime scale fast, restoring strong steam output and proper water flow. Detergent-free formula is highly effective in hard-water environments or on heavy mineral build up after extended oven use.





PROBLEND™



hand care

Clean. Safe. Healthy.

It's simple. It's universal - Clean, germ-free hands mean healthier living, working and learning environments. The ProBlend Hand Care line offers a variety of effective soaps and hand sanitizers that are easy and convenient to install and refill, and that are excellent choices for schools, healthcare, food service, hospitality and janitorial applications.



Hand Care Cartridge System



ALCOHOL FOAMING HAND SANITIZER

FRAGRANCE FREE
PB00CUS08AA · 2/1.25 L

Foaming Hand Sanitizer. Highly effective at removing bacteria from skin. Gentle on skin, leaving skin clean and smooth. FDA Registered.



MANUAL DISPENSER

PB00OPH02AB · BLACK
PB00OPH02AA · WHITE

Manual hand care product dispenser for 1.25 L cartridges. Ergonomic and easy to use with a low force presser and one-handed dispensing. Up to 3125 hand washes/sanitizes per cartridge.



ANTIBACTERIAL FOAMING HAND SOAP

CITRUS SPICE SCENT
PB00CUS08AB · 3/1.25 L

Foaming Hand Wash. Provides a cleaner, better experience while promoting a safe, healthy environment. FDA Registered.

- Compact Footprint
- ADA Compliant
- High-grade ABS Plastic
- Easy Cartridge Loading



E3 FOAMING HAND SANITIZER

DYE & FRAGRANCE FREE
PB00CUS08AC · 3/1.25 L

All-In-One Hand Sanitizer and Cleanser. Kills 99.99% of common germs. Pre-Lathered for quick, convenient dispensing, leaving little room for mess. FDA Registered.



TOUCH FREE DISPENSER

PB00OPH02AD · BLACK
PB00OPH02AC · WHITE

Touch-free hand care product dispenser for 1.25 L cartridges produces automatic and reliable sensing with LED indicator light signaling use and low battery. Its low energy consumption allows up to 90,000 activations between battery changes.



FOAMING HAND SOAP

TROPICAL SCENT
PB00CUS08AD · 3/1.25 L

Foaming Hand Wash. Leaves hands soft and smooth, while effectively removing tough soils. *Green Seal Certified.*



Hand Sanitizers



ALCOHOL FOAMING HAND SANITIZER

FRAGRANCE FREE
PB00CUS08AG · 2/1 GAL

Foaming Hand Sanitizer. Highly effective at removing bacteria from skin. Gentle on skin, leaving skin clean and smooth. FDA Registered.



E3 FOAMING HAND SANITIZER

DYE & FRAGRANCE FREE
PB00CUS08AF · 2/1 GAL

All-In-One Hand Sanitizer and Cleanser. Kills 99.99% of common germs. Pre-Lathered for quick, convenient dispensing, leaving little room for mess. FDA Registered.

Hand Soaps



ANTIBACTERIAL FOAMING HAND SOAP

CITRUS SPICE SCENT
PB00CUS08AE · 2/1 GAL

Foaming Hand Wash. Provides a cleaner, better experience while promoting a safe, healthy environment. FDA Registered.



CLEAN & SIMPLE

LEMON SCENT
PB0015485AB · 4/1 GAL

Economical Liquid Hand Soap. Formulated for excellent quality and use cost. Rich lather, mild pleasant fragrance and satisfaction for guests and facility management alike.
Doubles as a pot and pan detergent.



AMENITIES HAND SOAP

FLORAL SCENT
PB0013950AA · 4/1 GAL

White Lotion Hand Soap. Luxurious ingredients create rich, creamy lather that moisturizes as well as it cleans. It pampers hands, leaving them soft and smooth, while effectively removing tough soils.



CLEAR SILK

ALMOND SCENT
PB0027230AB · 4/1 GAL

Dye Free Lotion Hand Soap. Luxurious ingredients create rich, creamy lather that moisturizes as well as it cleans. It pampers hands, leaving them soft and smooth, while effectively removing tough soils.



BLUE FOAMING SILK

MOUNTAIN SPRING SCENT
PB0027234AF · 2/1 GAL

Foaming Hand Soap. Creates rich, creamy lather right from the dispenser. Leaves hands soft and smooth, while effectively removing tough soils.



CLEAR FOAMING SILK

ALMOND SCENT
PB0027235AA · 4/1 GAL

Dye Free Foaming Hand Soap. Creates rich, creamy lather right from the dispenser. It pampers hands, leaving them soft and smooth, while effectively removing tough soils.



AMENITIES

HYGIENE SYSTEM

Sustainable Alternative to Amenities

Cartridges & Dispensers

- Built-in viewing window prevents outages for guests
- Easy bulk fill with reusable pumps
- Sophisticated design with easy change out
- Locking mechanism prevents tampering and vandalism
- Mold prevention

Bulk Refill - 4/1 Gallon Case

- Easy to use hand pumps makes refilling simple and mess-free process
- Sustainable with less plastic waste than non-refillable cartridges
- Matching Gallon & Cartridge labels to easily identify the correct refill product.

Products Available

- Shampoo
- Conditioner
- Hair & Body Wash
- Body Wash
- Hand Soap
- Lotion

Dispensers & Pumps

Item Code	Type
00038	1 Product White
00040	1 Product Black
00036	Pump

Cartridges

Item Code	Type
00026	Shampoo
00027	Conditioner
COMING SOON	Hair & Body Wash
00028	Body Wash
00029	Hand Soap
COMING SOON	Lotion

Bulk Refill - 4/1 Gallon

Item Code	Type
COMING SOON	Shampoo
COMING SOON	Conditioner
COMING SOON	Hair & Body Wash
COMING SOON	Body Wash
PB0013950AA	Hand Soap
COMING SOON	Lotion

PROBLEND™





PROBLEND™



housekeeping

Fresh. Sparkling. Clean.

From guest rooms to public restrooms and every room in between, ProBlend housekeeping solutions go far Beyond Clean... They brighten, sanitize, disinfect, deodorize, sparkle, polish, protect and maintain rooms and fixtures from floor to ceiling. For the health and safety of occupants and guests. For the benefit of your organization.

All Purpose Cleaners



PROTECT24

04629 • 6/1 QT • 2/1 GAL (Refill)

24 Hour Sanitizer/Disinfectant.

Provides cleaning performance together with disinfection of harmful bacteria and viruses including SARS-CoV-2. Eliminates 99.9% of bacteria for 24 hours. Ready to use. Residue free finish.



CITRUS CLEAN

15120
4/1 GAL

Citrus Degreaser. Concentrated all purpose cleaner/degreaser contains d-limonene, a natural citrus solvent. It provides exceptional cleaning performance of both fat and petroleum based soils. Removes adhesive residue. Citrus fragrance.



CREAM CLEAN

COMING SOON • 12/1 QT

Cream Cleanser. Nonabrasive cleanser safely removes stains and polishes surfaces including porcelain, chrome, plastic, fiberglass, stainless steel, brass, copper, etc.

Restroom Care



ERASER

12690
6/1 QT

Mold & Mildew Stain Remover and Bathroom Cleaner. Powerful non-acid cleaner and destainer removes challenging stains including mildew, food stains, and discoloration. Contains chlorine bleach. Floral fragrance. Ready to use.



ANTIMICROBIAL URINAL MAT

PB00WIZ01AB • 12/CASE

Urinal Mat. Inhibits odors with built-in antimicrobial compounds and lasts up to a month in most locations. No maintenance, just mop/wipe around the mat as needed. Its carpet like texture and fiber configuration promote rapid air drying.



SPLASH HOG URINAL SCREEN

PB00WIZ01AA • 6/CASE

Urinal Screen. Designed to reduce splash back and provide a clean pleasant fragrance. The powerful Clean fragrance lasts for 60 days and replaces the need for a room deodorizer.



Q CLEANERS

Cleans & Deodorizes in One-Step!

Quaternary Cleaner & Odor Counteractant. Use on hard surfaces such as floors, walls, in dumpsters, and other areas where odors can be a problem. Helps prevent mildew growth.

Great all-in-one product for the bathroom!

Available in 4/1 Gallon cases in three scents:

LAVENDER • PB0016759AA | LEMON • PB0016760AB | PINE • PB0019740AA



Polishes



ENHANCE

PB00QUE01AA · 12/14.5 OZ

Stainless Steel Cleaner. Aerosol spray. Oil based cleaner brightens, polishes and protects stainless steel by forming a shield that resists watermarks and rust. Also great for aluminum, chrome, Formica®, porcelain and ceramic tile. Lemon fragrance.



METAL BRITE

22020 · 6/1 QT

Ready To Use Stainless Steel Cleaner & Polish. Mineral oil based. Removes grease, soils, water stains, fingerprints and tarnish from surfaces. It leaves a brilliant shine on polished metal surfaces. Lemon fragrance.



REJUVENATE

PB00QUE01AB · 12/17 OZ

Beeswax Furniture Polish. Aerosol spray. Cleans all wood surfaces. Restores color and gloss, eliminates small scratches and blemishes and replaces essential oils in natural or treated wood surfaces. Lemon fragrance.

Air Care



EXTREME CANNABIS ODOR OUT

PB0011063AA · 6/1 QT

Ready to Use Neutralizer for Cannabis Odors. Penetrates to permanently destroy the "skunk-like" odor of marijuana instantly.



EXTREME SMOKE ODOR OUT

PB0011062AA · 6/1 QT

Ready to Use Smoke & Pet Urine Odor Neutralizer. Penetrates porous surfaces neutralizing cigarette, cigar and pipe odors instantly. Also eliminates odors from pet urine.



RACHAEL TOLLIVER LINEN FRESH RTU

PB0027258AA · 6/1 QT

Ready to Use Fabric Refresher & Softener. Refreshes fabrics and eliminates odors at the source including smoke, mildew, pet odors and urine. Relaxing scent of lavender, jasmine and a hint of apple.

Glass Cleaners



CLEAR VIEW

PB0023140AA · 6/1 QT (Ready To Use)
PB0023040AA · 4/1 GAL (Concentrate)

Glass & Hard Surface Cleaner. Can be used for cleaning glass, stainless steel, plastic, vinyl, and tile. Use for a spotless streak-free shine on most hard surfaces.



GLASS GUARD PRO

PB0011192AA · 6/1 QT

Ready To Use Glass Cleaner & Protectant. Fog-free, residue repelling, and water sheet formula keeps surfaces clean longer. Leaves a streak free shine on glass, mirrors, stainless steel and most hard surfaces.

Carpet Care



SPOTS AWAY

PB00QUE01AC · 12/18 OZ

Water-Based Carpet Spot & Stain Remover. Aerosol spray. Effectively cleans all types of spots and stains without damaging carpet fabrics. Neutralizes odors and leaves a pleasant fragrance.



STAIN PRO E

14050 · 6/1 QT

Fabric & Carpet Stain Remover with Enzymes. Powerful enzyme formula for use in the pre-spotting process and as a carpet spotter. Removes challenging grass, ink, chocolate, ketchup, gravy and other food color stains. Kiwi peach fragrance.

CleanSight

Beyond Clean - Assurance at Every Touchpoint

Turn Invisible Risks Into Visible Results



VISUAL Validation of Cleanliness: Capture and document surface hygiene with high-resolution imaging—no guesswork, just evidence



Before cleaning, the door handle shows high levels of contamination—after cleaning limited contamination remains. Proven protection you can see.



COMPLIANCE Confidence: Meet industry and audit requirements with traceable, verified cleaning records.



RISK Reduction: Identify missed areas before they become health or reputation risks—protect guests, patients, and your brand.



OPERATIONAL Insight: Gain actionable data to improve staff performance, training, and accountability.



REAL-TIME Information: Instantly verify cleaning effectiveness across rooms, facilities, or fleets—anytime, anywhere!

**Additional Information
on Page 36**



Protect24

24 Hour Residual Sanitizer | Multi-Purpose Cleaner



Provides a Clean that Lives On

CONFIDENCE in 24 hour bacteria sanitizing shield: Rigorously tested and EPA-registered. Rest assured surfaces stay cleaner between cleans – up to 24 hours with *Protect24*.

EFFICIENCY unleashed: The technology behind *Protect24* penetrates tough stains cutting down cleaning time and provides a true clean that lives on.

COMMITMENT to clean: Adopting *Protect24* technology signals your mission to define a new standard of cleanliness.

CLEANING PROTOCOLS simplified: *Protect24* comes ready-to-use, eliminating operational pain points that come from dilutable products.



CONSUMER & PRO USE

- Door Knobs
- TV Remotes
- Public Spaces
- High Touch Areas
- Railings
- Bathrooms
- & More

PRODUCT SNAPSHOT

- Multi-Purpose Cleaner
- Disinfectant
- Sanitizes up to 24 hours
- No Smear Residue
- Patented Formula
- For use on Hard, Non-Porous Surfaces



PROBLEND™

Item Code	Case
PB0004629AA	6/1 QT
PB0004629AB	2/1 GAL

Productivity at its Best... Precise Measuring Plus Powerful Cleaning!



Safe Link Closed Loop Chemical Management System for easy use of chemicals and change-out

PROBLEND™

GALAXY DISPENSING SYSTEMS

ProBlend's GALAXY Dispensing System makes filling bottles, buckets and equipment easier, safer, and more accurate. It is the cleaning industry's comprehensive housekeeping system, designed for hospitality, building service contractors, schools, government facilities and other businesses who need safe and flexible dilution and dispensing of product.

GALAXY has a sleek design and modern appearance in any housekeeping environment, plus multiple features to enhance productivity and dispensing flexibility. It offers the convenience of one-handed bottle filling and point-of-use remote bucket fill activation, with ultimate flexibility from 1 to 8 products, or multiple dilutions for a single product.



Features & Benefits:

- Consistent measuring for excellent cleaning results and use cost
- A range of housekeeping products for every facility area
- Formulas designed for the environment and green care programs
- Remote fill option for easy filling of buckets and scrubbers when location flexibility is required



- Super concentrated formulations for efficiency and sustainability
- Fully color coded equipment with icons for training in all languages
- Simple one-hand bottle fill offers more flexibility when filling spray bottles
- 1 gallon-per-minute flow control disc improves dispensing accuracy with ultra lean dilutions



GALAXY Dispensing System - Odor Eliminators & Bathroom Cleaners



GALAXY-10 LEMON GINGER

27215 • 2/1 GAL

FABRIC REFRESHER, SOFTENER & ODOR COUNTERACTANT.

Refresh & eliminate odors on sheets and towels breathing new life into a space with this bright spring scent blooming with citrus, ginger and rose.



GALAXY-11 LUXURY SUITE

27259 • 2/1 GAL

FABRIC REFRESHER, SOFTENER & ODOR COUNTERACTANT.

Refresh & eliminate odors on sheets and towels with the indulgent, elegant scent of white tea, geranium and cedarwood. Enjoy the scent of five star linens anywhere.



GALAXY-12 LINEN FRESH

27225 • 2/1 GAL

FABRIC REFRESHER, SOFTENER & ODOR COUNTERACTANT. Specially designed odor counteractant to refresh sheets and towels for increased guest satisfaction scores. Relaxing scent of lavender, jasmine and a hint of apple.



GALAXY-14 LAVENDER FRESH

27205 • 2/1 GAL

FABRIC REFRESHER & SOFTENER

Specially designed to refresh sheets and towels for increased guest satisfaction scores. Let your cares drift away with the relaxing scent of lavender, jasmine and peach blossom layered with warm vanilla musk.



GALAXY-15 POLYNESIAN TIARE

13685 • 2/1 GAL

AIR FRESHENER. Neutralizes odors while providing a pleasing and long lasting scent in areas prone to odors. Enjoy the cool ocean breezes swirling with sweet flower petals engulfed with teak wood.



GALAXY-20 BATH FORCE ULTRA

27263 • 2/1 GAL

BATHROOM. Ultra Concentrated Bathroom Cleaner. Hard water formula for all restroom surfaces including tile, tubs, showers and toilet areas. Removes mold and mildew from porcelain and chrome. Long lasting lavender fresh fragrance.



GALAXY-21 BATHROOM DISINFECTANT

27240 • 2/1 GAL

BATHROOM. Non-acid Bathroom Cleaner. Cleans, disinfects and deodorizes in a single step. Concentrated formulation for use in hotels, nursing homes and assisted living facilities. EPA registered.



GALAXY-22 GREEN CARE OXYGEN POWER

14081 • 2/1 GAL

BATHROOM. Non-Corrosive Bathroom Cleaner. Concentrated, environmentally preferable cleaner, fortified with natural citrus cleaning power and hydrogen peroxide. It attacks stubborn soils and stains on virtually all surfaces not harmed by water. Citrus fragrance.



GALAXY-23 ASTER DISINFECTANT

COMING SOON • 2/1 GAL

BATHROOM. Citric Acid Based Bathroom Cleaner Disinfectant, cleaner and deodorizer. EPA registered.



GALAXY-25 CITRUS TUB & TILE

27210 • 2/1 GAL

BATHROOM. Acid Bathroom Cleaner. Concentrated, non-corrosive, non-fuming acid cleaner removes hard water scale, alkaline detergent build-up, dirt and rust. Renews original brightness on stainless steel and chrome surfaces. *Upgraded lemon fragrance.*

GALAXY Dispensing System - Glass, Floor & All Purpose Cleaners



GALAXY-31 CLEAR VISION

23040 · 2/1 GAL

GLASS. Highly concentrated glass and hard surface cleaner creates a spotless, streak-free shine. In diluted form it can be used for cleaning glass, stainless steel, plastic, vinyl, and tile.



GALAXY-40 EASY MOP

18570 · 2/1 GAL

FLOOR. Neutral Floor Cleaner. Easy Mop is solvent free and won't dull high gloss floor finishes. Environmentally friendly and phosphate free, it easily removes dirt, oil and grease, leaving a pleasing citrus fragrance.



GALAXY-41 ENVIRO MOP

BIO23 · 2/1 GAL

FLOOR. Microbial Floor Cleaner. Everyday use floor cleaner and drain maintainer. Delivers superior floor cleaning, odor control, drain and trap maintenance, environmental benefits and flexibility. Effectively removes the food sources of fruit flies. Fresh fragrance.



GALAXY-50 GREEN OXY PLUS

14081 · 2/1 GAL

ALL PURPOSE. Fortified with hydrogen peroxide and natural citrus cleaning power Green Oxy Plus attacks stubborn soils and stains on any surface not harmed by water. Environmentally preferred cleaner. Citrus fragrance.



GALAXY-51 WAVE PLUS

RD102 · 2/1 GAL

ALL PURPOSE. All purpose cleaner removes stains and soils from hard surfaces including furniture, countertops and non-skid tub surfaces. Bold citrus fragrance.



GALAXY-53 LAVENDER PLUS

16600 · 2/1 GAL

ALL PURPOSE. Unique multi-purpose concentrated cleaner and degreaser, formulated for removing soil, grease and grime from any washable surface. Bold lavender fragrance.



GALAXY-54 NEUTRAL DISINFECTANT

27241 · 2/1 GAL

ALL PURPOSE. Disinfectant, cleaner and deodorizer with neutral pH formula. Concentrated formulation for use in hotels, nursing homes and assisted living facilities. EPA registered.



GALAXY-55 ZENITH APC DISINFECTANT

COMING SOON · 2/1 GAL

ALL PURPOSE. Hydrogen peroxide disinfectant, virucide, and cleaner for most hard, non-porous surfaces including glass! EPA registered.



Stay Confident

Innovative Cleaning & Sanitizing Program
for Staff Efficiency & Guest Confidence



Hard Surfaces



PROTECT24

04629 • 6/1 QT • 2/1 GAL (Refill)

24 Hour Sanitizer | Multi-Purpose Cleaner. Provides cleaning performance together with disinfection of harmful bacteria and viruses including SARS-CoV-2. Eliminates 99.9% of bacteria for 24 hours. Residue free finish. Ready to use.

Use On: Light switches, door handles, bathroom fixtures, and other high-touch hard, non-porous surfaces.



GALAXY-21 BATHROOM DISINFECTANT

27240 • 2/1 GAL

Non-acid Bathroom Cleaner. Cleans, disinfects and deodorizes in a single step. Concentrated formulation. EPA registered.

Use On: Toilet bowl interior/exterior and other hard, non-porous bathroom surfaces.



GLASS GUARD PRO

11192 • 6/1 QT

Ready To Use Glass Cleaner & Protectant. Fog-free, residue repelling, and water sheeting formula keeps surfaces clean longer. Leaves a streak free shine on.

Use On: Mirrors, glass, stainless steel and most hard surfaces.

Soft Surfaces



GALAXY-12 LINEN FRESH

27225 • 2/1 GAL

Fabric Refresher, Softener & Odor Counteractant. Relaxing scent of lavender, jasmine and a hint of apple. Specially designed odor counteractant for increased guest satisfaction scores.

Use On: Sheets and towels.



EXTREME SMOKE ODOR OUT

11062 • 6/1 QT

Ready to Use Smoke & Pet Urine Odor Neutralizer. Neutralizes cigarette, cigar, pipe and pet urine odors instantly.

Use On: Carpet, A/C vents & filters, fabrics and upholstery, pillows, mattresses.



EXTREME CANNABIS ODOR OUT

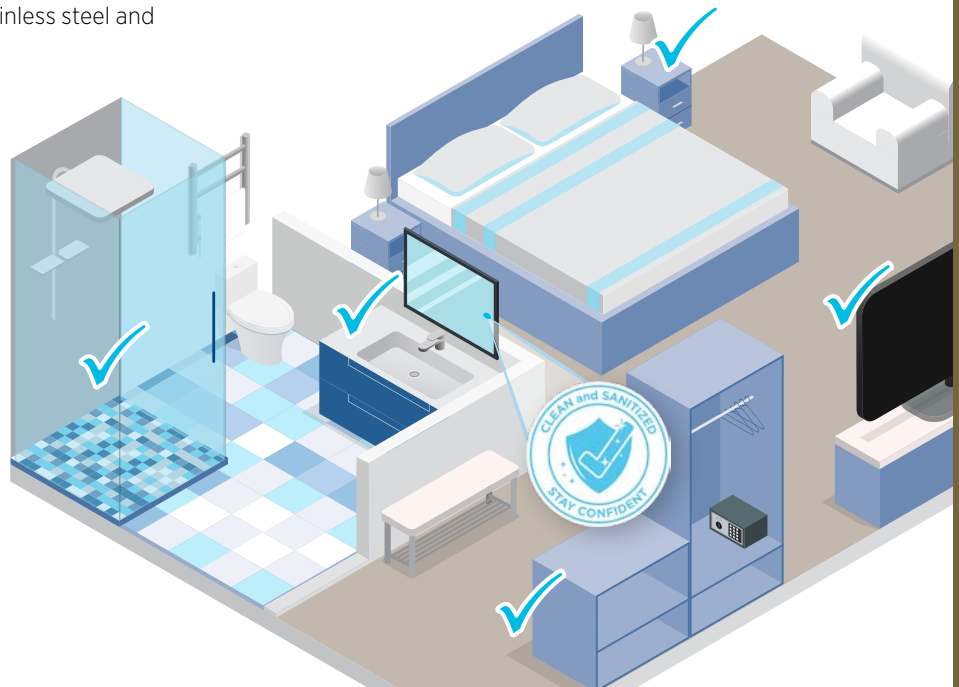
11063 • 6/1 QT

Ready to Use Neutralizer for Cannabis Odors. Penetrates to permanently destroy the "skunk-like" odor of marijuana instantly.

Use On: Carpet, A/C vents & filters, fabrics and upholstery, pillows, mattresses.

The Stay Confident Program is an innovative whole room cleaning & sanitizing program.

From carpet to air vents, bathroom to bedding Stay Confident solutions make cleaning easier, customers feel safer, and increase guest satisfaction scores.



PROBLEND™

Stay Confident

Innovative Cleaning & Sanitizing Program
for Staff Efficiency & Guest Confidence

AAOIA

SILVER

INDUSTRY PARTNER



Laundry Program

NEW TECHNOLOGY



ES LAUNDRY BRIGHT

23385 • 2.5 GAL • 5 GAL • 15 GAL

Dual Detergent. Removes makeup and suntan lotion! One shot low temperature liquid formulation consisting of alkaline builders blended with emulsifiers for commercial laundry systems. Excellent for use on linens in hotels and motels.



CHLOR WHITE

05205 • 2.5 GAL • 5 GAL • 15 GAL

Liquid Laundry Bleach. Maximum strength liquid bleach. Safe on cotton and synthetic fabrics. Can be used as a soil removal aid or as a destaining presoak for blood and protein stains. Not for use on natural silk, wool or nylon fibers.



SOUR EXTRA

16894 • 2.5 GAL • 5 GAL • 15 GAL

Iron & Odor Removing Laundry Neutralizer. Neutralizes bodily odors. Acid based liquid laundry neutralizer with superior iron/rust removing properties prevents and removes red iron spots, brightens yellowing linens and reduces pH to prevent browning when linens are ironed.

NEW TECHNOLOGY



SOFT SELECT

27247 • 2.5 GAL • 5 GAL • 15 GAL

Fabric Softener with Springtime fragrance. Concentrated ultra fabric softener with Soft Touch technology leaves linen smelling fresh and soft.

Laundry Extras



STAIN PRO 1

27170 • 10/1.5 LB • 20 LB

Reclaim for White Linen. Reclaims hard to remove stains missed in pre-spotting procedures or washing process. Stain Pro 1 puts linen back in service, saving you time and money.



STAIN PRO PRE-SPOTTER STARTER KIT

PBOOPSSTRKT • 6/1 QT

Contains 5 Pre-Spotter Formulas. Each starter kit contains: 2 quarts of Stain Pro C (White Linen) and 1 quart each of Stain Pro B, E, O, and R (Blood, Enzymes, Oils & Rust). Also included is a mini pre-spotters stain removal chart.



SANTEX

PBOOEDM01AB • 5 GAL

Ready To Use Liquid Fabric Sanitizer. Used in the final rinse, Santex is both self-sanitizing and bacteriostatic. This active antimicrobial finish continually kills newly acquired bacteria until laundered. Designed for on-premise laundries and smaller machines.

The Stay Confident Program starts out of the room in the laundry service.

Designed to brighten whites, erase stains, and get linen back in service quickly and efficiently. From makeup to rust, body odors to suntan lotion Stay Confident has it covered!





PROBLEND™



laundry

Bright. Soft. Impressive.

Brighter colors. Whiter whites. Softer towels and sheets. Cleaner uniforms. Whatever your commercial or industrial laundry need, ProBlend can help with high performance solutions and efficient systems – all designed to impress employees and guests and brighten your bottom line.



Detergent Boosters



BREAK OUT

16900
5 GAL • 15 GAL • 55 GAL

Alkali Booster. Concentrated laundry break contains soil dispersants, suspending agents, alkaline builders and water conditioners. Ideal for use where heavy grease based soils occur. Can be used in all water conditions.



CONDITIONER SE

21025
5 GAL

Laundry Conditioner. Enhances laundry detergent performance in hard water environments. Water conditioner may be metered directly into laundry water supply.



LINEN BOOST

22679
5 GAL

Solvent Detergent Booster. This product provides a boost of power to remove extra heavy oily and greasy soils. Works best as a prewash or use as a detergent additive on medication, food, oil and adhesive soils.

Detergents - Powder



ENZYME CLEAN

14190
4/9 LB • 50 LB

Multifunctional Laundry Detergent. Contains color safe bleach and optical brighteners. Use as a presoak for naturally occurring stains. Works in low temperatures and will not harm fabrics. Citrus fragrance.



NEW CLEAN

12540
50 LB

High Efficiency Powder Detergent. Acceptable for use in HE front loading, low foam washers. New Clean is formulated for soils in hotels, motels, nursing homes and dormitories. Citrus fragrance.



NEW CLEAN III

12665
50 LB

Value Added Powder Detergent. Use to gently remove soils and leave clean, refreshed linen. Use in institutional and commercial industries, in both front loading and top loading washing machines. Citrus fragrance.



OPTI-BRITE

11691
50 LB

All-In-One Powder Detergent. This premium detergent drastically reduces bleaching with regular use. Its intense optical brightening system produces brilliant colors and bright whites. Effective at all temperatures. Clean fresh fragrance.

Detergents - Liquid



DETERGENT PLUS

17005
5 GAL • 15 GAL • 55 GAL

Oil Releasing Detergent. Great liquid laundry detergent for oily and greasy soils like lipstick, shoe polish and sun tan lotion. It has a synergistic blend of surfactants plus powerful dispersants to emulsify and suspend soils. Citrus fragrance.



TRIBUTE

27243
2/1 GAL • 2.5 GAL • 5 GAL • 15 GAL

High Efficiency Laundry Detergent. Powerful surfactants to clean linen, but at the same time treats fabric threads gently while removing soils. Cold and hot water formula. Clean fresh fragrance.



ENZYME POWER

16905
5 GAL • 15 GAL

Enzyme Liquid Laundry Detergent. Simplify the laundering process by eliminating laundry break and sour steps. Enzyme Power does not require high alkalinity, can be used as a presoak and performs well in lower temperatures. Citrus fragrance.



VICTORY

27245
2.5 GAL



Dye & Fragrance Free Detergent. Hypoallergenic. HE, High Efficiency, laundry detergent has powerful surfactants to remove soils, while at the same time is gentle on skin. Cold and hot water formula.



ES LAUNDRY BRIGHT

23385
2.5 GAL • 5 GAL • 15 GAL

Dual Detergent. Now removes makeup and suntan lotion! One shot low temperature liquid formulation consisting of alkaline builders blended with emulsifiers for commercial liquid laundry systems. Excellent for use on linens in hotels, motels, and nursing homes.



WAVE

13775
5 GAL • 15 GAL • 55 GAL



Economical Laundry Detergent. Uniquely formulated concentrate cleans and brightens linens and other fabrics with optical brighteners. For use in home and commercial machines.



SUDS ALL

15780
5 GAL

Unbuilt Laundry Detergent. High-sudsing detergent with a moderate pH contains powerful surfactants to emulsify soils during the wash cycle. Best for light to medium soiled laundry in home style machines. Citrus fragrance.



Destainers



CHLOR WHITE

05205

2.5 GAL • 5 GAL • 15 GAL • 55 GAL

Liquid Laundry Bleach. Maximum strength liquid bleach. Safe on cotton and synthetic fabrics. Can be used as a soil removal aid or as a destaining presoak for blood and protein stains. Not for use on natural silk, wool or nylon fibers.



OXY BRILLIANT

17150

2.5 GAL • 5 GAL • 15 GAL

Color Safe Bleach. Concentrated peroxide bleach blended for safe bleaching of colored fabrics, clothes and textiles. This extremely concentrated oxygen compound is safe for most fabrics and dyes when used as directed.

Sour/Softener



SOUR/SOFT PLUS

16898

5 GAL • 15 GAL

Citrus fragrance. Concentrated, economical, acid based neutralizer and anti-yellowing agent for use in commercial laundries. Sour/Soft Plus reduces the residual alkalinity in clothes and linens.

Sour



SANTEX

PBOOEDM01AB • 5 GAL

Ready To Use Liquid Fabric Sanitizer Used in the final rinse, Santex is both self-sanitizing and bacteriostatic. This active antimicrobial finish continually kills newly acquired bacteria until laundered. Designed for on-premise laundries and smaller machines.



SOUR ADVANCED

27242

5 GAL

Ultra Concentrated Acid Neutralizer. For commercial laundries provides superior pH control, and enhances white linen. Great for use in tunnel washers



SOUR ALL

22630

5 GAL

Laundry Neutralizer. Concentrated acid based liquid neutralizer and anti-rust agent specially formulated for commercial laundries.



SOUR EXTRA

16894

5 GAL • 15 GAL • 55 GAL

Iron & Odor Removing Laundry Neutralizer. *Now neutralizes bodily odors. Great for healthcare!* Acid based liquid laundry neutralizer with superior iron/rust removing properties prevents and removes red iron spots, brightens yellowing linens and reduces pH to prevent browning when linens are ironed.



SOUR ULTRA

11204

5 GAL

Odor Removing Natural Laundry Neutralizer. Acid based liquid laundry neutralizer with superior odor removing properties eliminates bodily fluid odors in healthcare settings. Naturally softens and is great for athletic wear. Reduces residual alkalinity in fabric. For commercial liquid laundry systems.



Softeners



SOFT SELECT

27247
2.5 GAL · 5 GAL · 15 GAL

Springtime fragrance. Concentrated ultra fabric softener with Soft Touch technology leaves linen smelling fresh.



SOFT SUNSET

27249
5 GAL · 15 GAL

Island Escape fragrance. Concentrated ultra fabric softener with Soft Touch technology. Reduces static and leaves linen soft.



SOFT TOUCH

17340
5 GAL

Citrus fragrance. Concentrated fabric softener for commercial and industrial automated laundry dispensing systems. Minimizes wrinkling, increases softness, reduces static electricity.



SOFT TOUCH PLUS

27071
5 GAL · 15 GAL · 55 GAL

April Fresh fragrance. Concentrated fabric softener minimizes wrinkling, increases softness and reduces static electricity. Its controlled viscosity allows for uniform dispensing in commercial and industrial laundry applications.

Sizing



SIZE ALL

PB00ALP01AD · 5 GAL

Laundry Starch for Natural Fabrics. High performance blue emulsion elegantly imparts stiffness and body to linens. Size All is ideal for natural and polyester blends. It also does an excellent job with all other fabrics. Pleasant fragrance.

Reclaim



STAIN PRO 1

27170
10/1.5 LB · 20 LB

Engineered for White Linen. Reclaims hard to remove stains missed in pre-spotting procedures or washing process. Stain Pro 1 in your operation will put linen back in service, saving you time and money.



STAIN PRO 2

27175 · 10/1.5 LB

Specifically for Colored Linen. Stain Pro 2 reclaims challenging stains missed in the pre-spotting procedure, putting more linens back in service and ultimately saving money and time.



STAIN PRO 3

04950 · 10/1 LB

Designed for Removing Rust Stains from Linen. One-step process added to the wash wheel will reclaim linen missed by pre-spotting. Stain Pro 3 will save linen and money for commercial laundry operations.



Pre-Spotters



STAIN PRO B

27185
6/1 QT

Blood Stain Pre-Spotter. Blood stains are easily removed from linens and other fabric by pre-spotting before laundering with high performance Stain Pro B. Professionally formulated to maximize results.



STAIN PRO C

12690
6/1 QT

Pre-Spotter with Bleach. Excellent chlorine infused pre-spotting agent for use on white linen. Removes a broad range of stains including coffee, wine, fruit juice, mildew and mustard. Linen must be chlorine bleach compatible. Floral fragrance.



STAIN PRO E

14050 · 6/1 QT

Fabric & Carpet Stain Remover with Enzymes. Powerful enzyme formula for use in the pre-spotting process and as a carpet spotter. Removes challenging grass, ink, chocolate, ketchup, gravy and other food color stains. Kiwi peach fragrance.



STAIN PRO O

22679
6/1 QT

Oily Stain Pre-Spotter. Specifically formulated to tackle the toughest oily stains. With a special blend of solvents, surfactants and boosters, Stain Pro O is designed to remove medicine, oil, lipstick, shoe polish and similar oily stains. Citrus fragrance.



STAIN PRO R

27190
6/1 QT

Rust Stain Pre-spotter. Gets rust out! Superb, concentrated iron removing formula, designed to pre-spot rust stains on linens.



STARTER KIT

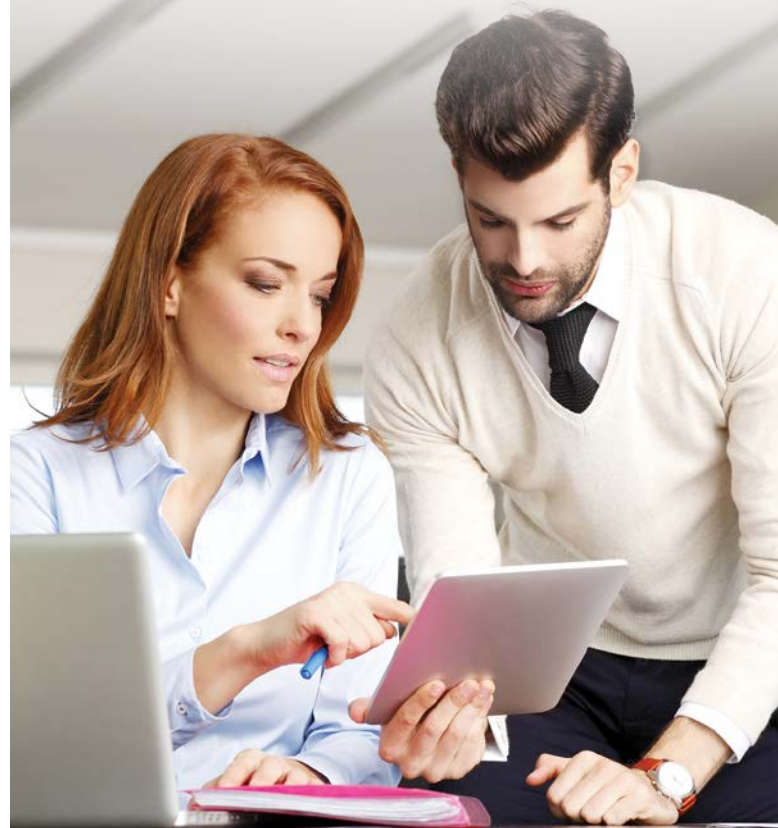
PB00PSSTRKT
6/1 QT

Stain Pro Pre-Spotter Starter Kit

This Starter Kit is a great way to introduce customers to our pre-spotter products. Each starter kit contains: 2 quarts of Stain Pro C and 1 quart each of Stain Pro B, E, O, and R. Also included are 5 sprayers and a mini pre-spotters stain removal chart.

PROBLEND™

*Electronic service reporting
that meets your every day
operational needs.*

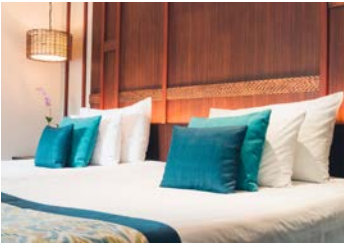


Science-based. Performance-focused.



CLEANING INNOVATION

- Customizable Program to meet YOUR needs
- Powerful Textile Cleaning Advancements
- Suntan Lotion Removal Technology



OPERATIONAL SAVINGS

- Increased Fabric Life up to 25%
- Improved Color Retention
- Reduced Wash Hours



HEALTH & SAFETY

- Reduces Alkali (corrosive/high pH) by 90%
- Hypoallergenic - No Fragrances or Dyes
- Reduces Overall Chemical Risk Profile of Laundry Area
- UV Capabilities for Sanitization & Chemical Reduction



ENVIRONMENTAL SUSTAINABILITY

- USA EPA 2019 Green Chemistry Award
- Safe Chemistry for Sustainable Environment
- Readily Available Bio-degradable formulas
- NPE & Phosphate Free

ADVANCED

CRUISE & MARINE LAUNDRY PROGRAM



For Large Scale Laundry Operations



SEA CAPTAIN

23390 • 5 GAL • 15 GAL

Revolutionary Detergent.

Utilizes a proprietary blend of surfactants that provides superior cleaning performance on soils without the use of alkali. Great on white food service garments and napery.



OXY EXCITE

00002 • 5 GAL • 15 GAL

Liquid Oxygen Bleach.

Non-chlorine, bleach provides excellent stain removal and is safe for use on colored fabrics. Comprised of completely biodegradable components and is considered environmentally "green" chemistry.



OCEAN BREEZE

11083 • 5 GAL • 15 GAL

Chelating Agent & Emulsifier Detergent. Effective against suntan oils.

Aids in soil removal, emulsifying free oils, and suspending hard water ions and other metals that interfere with the laundering process. Ultra-concentrated which allows for reduced packaging and reduced shipments. Certified by U.S. EPA Safer Choice.



BON VOYAGE

00003 • 5 GAL • 15 GAL

Liquid Sour. Non-fluoride, non-phosphorus based, organic acid provides effective neutralization of residual alkalinity and delivers the proper finishing pH to fabrics. Safer alternative to most laundry sour. It is NSF registered (B1) for use on fabrics that may come in contact with food.



HIGH SEAS

00001 • 5 GAL • 15 GAL

Enzyme Cleaning Boost Detergent.

Uniquely formulated enzyme blend that provides a cleaning boost to food service garments, napery and other hospitality classifications. Reduces the risk of fabric damage from high alkali wash. The reduction in concentrated alkali use is a substantial health and safety benefit for employees and the environment. *To be used with Sea Captain.*



SEA STAR

00004 • 5 GAL • 15 GAL

Dye & Fragrance Free Fabric Softener.

Highly concentrated liquid fabric softener designed for automatic injection equipment. It imparts a soft hand on the fabric when used in the final wash bath.



ANCHORS AWAY

23300 • 5 GAL • 15 GAL

Liquid Laundry Alkali.

To be used as a pH buffer for *High Seas*.



CHLOR WHITE

05205 • 5 GAL • 15 GAL

Liquid Laundry Bleach.

Maximum strength liquid bleach. Safe on cotton and synthetic fabrics. Can be used as a soil removal aid or as a destaining presoak for blood and protein stains. Not for use on natural silk, wool or nylon fibers.

Laundry Innovation at Work™

- Sustainable Solutions - Reduce Carbon Footprint
- Improves Color Retention & Less Dye Transfer
- Reduces Water & Energy Consumption
- Reduced Alkali & Harsh Chemicals
- Increases fabric life by 15-25%
- Hypoallergenic Formulas



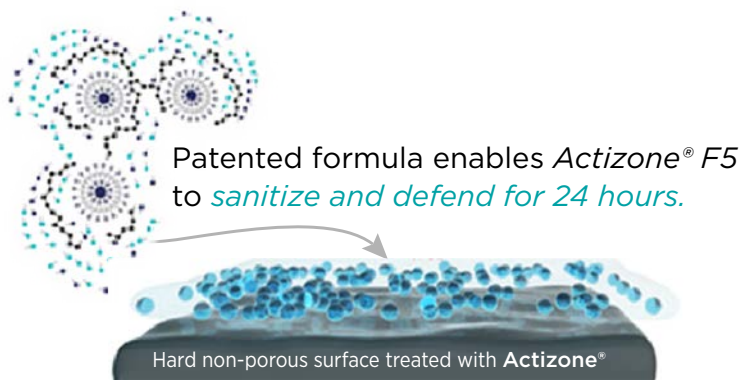
Cruise with Confidence



Provides A True Clean for **HIGH-TOUCH AREAS***

- Lights & Handles
- Railings
- TV Remotes
- Bathroom
- Public Spaces
- & More

*on hard, non-porous surfaces



CONFIDENCE in 24 hour bacteria sanitizing shield: Actizone[®] F5 forms an invisible, abrasion-resistant, protective film on surfaces eliminating 99.9% of bacteria¹ for up to 24 hours even after multiple touches.

EFFICIENCY unleashed: Actizone[®] F5 not only exhibits proven antimicrobial efficacy but also provides an optimal clean, leaving surfaces² with a true clean that lives on.

COMMITMENT to clean: Actizone[®] F5 is a unique one-step disinfectant cleaner that outperforms existing market benchmarks. - *Upcoming validation process capabilities*

CLEANING PROTOCOLS simplified: Actizone[®] F5 comes ready-to-use, eliminating operational pain points that come from dilutable products.



PRODUCT SNAPSHOT

- Kills Covid-19 Pandemic SARS-CoV-2 virus on hard non-porous surfaces
- Disinfectant
- Sanitizes up to 24 hrs
- Multi-Purpose Cleaner
- No Smear Residue
- Patented formula is tough on dirt

1. Effective against Staphylococcus aureus, Klebsiella aerogenes.
2. Hard, non-porous, non-food contact surfaces.

CleanSight

Beyond Clean - Assurance at Every Touchpoint

Your Cleaning Insurance Policy

CleanSight is a digital safeguard that visually ensures every surface meets your standards, every time.

With advanced imaging and data-backed validation, you're not just trusting that spaces are clean—you're proving it. Whether you're managing a hotel suite, a patient room, or a cruise cabin, this system delivers peace of mind, protects your reputation, and empowers your team to go Beyond Clean.

CleanSight Includes:

- Pathfinder™ Kit
 - iPad* & Halo Unit
 - * 12 Month Warranty
- Tripod
- 1 User License
- 150 Images/Month



How effective are your cleaning protocols?

We'll show you how CleanSight works to reveal surface contamination you may have been missing.

Contact your ProBlend Distributor to book a demo.

[Additional Information on Page 20](#)



PROBLEND™



equipment & tools

Reliable. Flexible. Ownable.

ProBlend's line of durable, reliable cleaning machinery is designed to meet the needs of your business today and tomorrow. Financing programs include purchase, lease or rent to own, with flexible, competitive terms. Your local ProBlend representative can help you determine the equipment and program that's right for you.

SPARKOZ

AUTONOMOUS CLEANING ROBOTS

“Never-Lost” 360° Navigation

Full coverage, zero missed spots

Adaptive Cleaning

Perfect results on different floors

Self-Charging & Auto-Draining

True hands off operation



THE FUTURE OF CLEANING,
AT YOUR SERVICE.

See the entire product line at ProBlendSolutions.com

Sparkoz - Autonomous Cleaning Robots



TN70-PRO - Disc Brush

Autonomous Floor Cleaning Robot. With its cutting-edge technology and unparalleled cleaning performance, the TN70 is the ultimate solution for all your cleaning needs. At the heart of its exceptional capabilities lies its unique 20" single giant brush, designed to consistently deliver immaculate results. 28 inch brush cleaning width for disc. 18.5 gallon solution tank capacity. 13.2 gallon recovery tank capacity. 100 Ah battery capacity. 21960 ft²/h cleaning efficiency.

- Precise movement and mapping, ensures thorough and efficient cleaning in various environments.
- Intelligent obstacle detection allows TN70 to navigate around obstacles seamlessly, minimizing disruptions and ensuring safe operation.
- User-friendly interface with intuitive controls for easy operation and seamless integration into any cleaning routine.

Available with Auto Charging or Auto Workstation.

Add ons include: Disinfection module, dust mop system and safety light.



TN70-PRO - Cylindrical Brush

Autonomous Floor Cleaning Robot. Redefining Industrial Floor Care Efficiency. The TN70 Pro CB combines high-performance sweeping and scrubbing in a single autonomous pass—eliminating the need for two separate machines. 24v 400w dual brush roller motor. 600 rpm brush rotating speed. 20.5 inch cylindrical brush cleaning width. 2 liter trash bin capacity. 21960 ft²/h cleaning efficiency.

Same charging and add ons as Disc Brush.



TN10-PRO w/Automatic Workstation

Autonomous Robot Floor Scrubber. TN10's compact and flexible design, powered by advanced AI navigation, allows it to navigate small and complex spaces effortlessly. Optimize your cleaning operations with a compact, lightweight, and affordable solution that offers powerful commercial cleaning at a fraction of the cost. Zero inch edge distance. 57 lbs gross weight. 23 inch accessible width. 8138 ft²/h cleaning efficiency.

- Detailed mapping technology enables systematic coverage and customized cleaning schedules.
- Automatic charging stations ensure multiple 100% autonomous cleaning missions per day.
- Quiet operation and compact design suitable for offices, retail, and commercial spaces.
- **Optional manual mode**, complete with a convenient telescoping handle offers flexibility to manually control the robot in complex or hard-to-reach areas, ensuring every inch of your space is thoroughly cleaned.



Dishmachines - Chemical Sanitizing Door Type



WAREFORCE® I-E

Internal Sump. Single rack, convertible for straight-through or corner application, 90-second cycle, 39 racks per hour, 1.02 gallons per rack, self-draining stainless steel wash pump assembly, air gap, electromechanical timer, top mounted controls, delimer switch, low product indicator light, built-in chemical pumps and priming switches, auto start/stop, built-in stainless steel scrap accumulator.



WAREFORCE® I-E-FL (Front Loading Machine) WAREFORCE® I-E-LTH (with booster heater)



WAREFORCE® I HH

Internal Sump. 27" tall chamber, single rack, convertible for straight-through or corner application, 90-second cycle, 39 racks per hour, 1.61 gallons per rack, self-draining stainless steel wash pump assembly, air gap, electromechanical timer, top mounted controls, delimer switch, low product indicator light, built-in chemical pumps and priming switches, auto start/stop, built-in stainless steel scrap accumulator.



WAREFORCE® II

Dual rack straight, 74 racks per hour, 1.17 gallons per rack, self-draining stainless steel wash pump assembly, air gap, electromechanical timer, three selectable wash cycles, top mounted controls, delimer switch, low product indicator light, built-in chemical pumps and priming switches, auto start/stop, built-in stainless steel scrap accumulator.



WAREFORCE® IIC

Same specifications as the WAREFORCE® II, except for corner installations. Please specify right front (R) or left front (L) door opening.



Dishmachines - High Temperature Sanitizing Door Type



WAREFORCE® HT-180

Single rack, field convertible for straight-through or corner application, electric tank heat, built-in booster heater with Sani-Sure™ final rinse system, 58 racks per hour, 0.89 gallons per rack, self-draining stainless steel wash pump assembly, universal timer, four selectable wash cycles, top mounted controls, exhaust vent fan control, front stainless steel dress panel.

Also available without booster heater or front loading.



WAREFORCE® HT-180 with Ventless & Energy Recovery

No vent hood required. Accommodates a wide range of water inlet temperatures and operates with only a cold water connection. Door interlock and pressure regulator included. Cleans 39 racks per hour. **Also available in front loading.**



WAREFORCE® HT-180 HH-E

27" tall chamber, single rack, field convertible for straight-through or corner application, electric tank heat, built-in booster heater with Sani-Sure™ final rinse system, 58 racks per hour, 1.36 gallons per rack, self-draining stainless steel wash pump assembly, dual counter-rotating lower wash arms, universal timer, four selectable wash cycles, top mounted controls, delimer switch, auto start/stop, exhaust vent fan control, front stainless steel dress panel.



WAREFORCE® HT-180HH-E with Ventless & Energy Recovery

See WAREFORCE® HT-180 VENTLESS specs above.
Cleans 37 racks per hour.



WAREFORCE® NXP-180

Single 57 second cycle, field convertible, electric tank heat, built-in booster heater with Sani-Sure™ final rinse system, 58 racks per hour, 0.89 gallons per rack, top mounted controls, delimer switch, exhaust vent fan control.



Dishmachines - Glasswashers



WAREFORCE® DG-E

Chemical sanitizing. Fill and dump with sustaining heater, 90-second cycle, 40 racks per hour, 1.16 gallons per rack, accommodates glasses and wares up to 11" high, functions as both a glasswasher and a dishwasher, easy access controls, electromechanical timer and two half-racks included.,



WAREFORCE® DG-HT-E-SEER-S

High temperature sanitizing. Recirculating, 20 racks per hour, 0.65 gallons per rack, Soft Start, built-in booster heater with Sani-Sure™ final rinse system, double wall construction, pumped drain, universal timer, digital LED control panel, three selectable cycles, one peg and one combination rack included.



WAREFORCE® CG

Chemical sanitizing. Rotary-type, cleans 1,200 glasses per hour, uses 10 gallons of water per hour, single switch operation, built-in chemical pumps and priming switches, hot or cold fresh water final rinse, convenient chemical storage and easy access scrap screens. Clockwise rotation.

WAREFORCE® CG-115

115 Volt version of WAREFORCE® CG.



Dishmachines - Conveyors



WAREFORCE® 44 CONVEYOR

44" single tank dual-rated conveyor dishmachine with electric tank heat, 225 racks/hour and 0.68 gallons/rack for high temp, 209 racks/hour and 0.78 gallons/rack for chemical sanitizing, Adjust-A-Peak™ conveyor speed, EnergyGuard™ system, 25" standard height clearance, table limit switch, automatic fill, manual/automatic switch, whisper-quiet stainless steel pump assembly, exhaust vent fan control.

WAREFORCE® 66 CONVEYOR

Same specifications as WAREFORCE® 44, plus 22" pre-wash section.

Dishmachines - Undercounters



WAREFORCE® UL30

Chemical sanitizing. Fill and dump with sustaining heater, 24 racks per hour, 1.2 gallons per rack, double-wall construction, stainless steel wash pump assembly, pumped drain, electromechanical timer, delimer switch, low product indicator light, built-in chemical pumps and priming switches, auto fill, auto stop, one peg and one combination rack included.



WAREFORCE® UH30-FND

High temperature sanitizing. Fill and dump, 24 racks per hour, 1.1 gallons per rack, built-in booster heater with Sani-Sure™ final rinse system, double-wall construction, stainless steel wash pump assembly, pumped drain, universal timer, delimer cycle, built-in chemical pumps and priming switches, auto fill, auto stop, one peg and one combination rack included.



PROBLEND™

BEYOND CLEAN.

ProBlendSolutions.com

— member of the PROBLEND™ NETWORK —