



PROBLEND™



Professional Cleaning Solutions

## Table of Contents


<b>●</b>	<b>warewash</b>	<b>3</b>
	High Temperature Systems .....	4
	All Temperature Systems.....	5
	Presoaks .....	5
	Pot and Pan .....	6
	Sanitizers and Disinfectants.....	6
	Cooking Surfaces .....	7
	Cleaners and Degreasers .....	7
	<b>RTU Products .....</b>	<b>8</b>
	Specialty Cleaners .....	9
	Floor Cleaners.....	9
	ASPIRE Ultra Warewash System .....	10
<b>●</b>	<b>workforce</b>	<b>11</b>
<b>●</b>	<b>emergency services</b>	<b>13</b>
<b>●</b>	<b>hand care</b>	<b>15</b>
	Hand Care Cartridge System .....	16
	Hand Sanitizers .....	17
	Hand Soaps.....	17
<b>●</b>	<b>housekeeping</b>	<b>19</b>
	<b>Protect24.....</b>	<b>18</b>
	All Purpose Cleaners .....	20
	Restroom Care.....	20
	Polishes .....	21
	Glass Cleaners.....	21
	Air Care .....	21
	Carpet Care.....	21
	Amenities .....	22
	GALAXY Dispensing System.....	23
<b>●</b>	<b>laundry</b>	<b>27</b>
	Detergent Boosters.....	28
	Detergents.....	28
	Destainers.....	30
	Sour/Softener.....	30
	Sour.....	30
	Softeners.....	31
	Sizing.....	31
	Reclaim.....	31
	Pre-Spotters .....	32
<b>●</b>	<b>equipment &amp; tools</b>	<b>33</b>
	SCBA Decon Washer .....	34
	Dishmachines.....	35
	Pacific Floorcare Equipment.....	39



## BEYOND CLEAN.

ProBlend is a brand of cleaning solutions that goes BEYOND CLEAN... for organizations that buy it, sanitation professionals and service technicians that use it, and customers and guests that enjoy the many benefits of cleaner, healthier environments.

Serving hospitality, education, food service, janitorial, Building Service Contractors (BSCs), emergency services, and municipalities, ProBlend uniquely offers a total commercial cleaning solution program. From high performance cleaning and sanitation to reliable, cost-effective systems and equipment, your authorized ProBlend dealer or service provider can recommend the perfect blend of professional ProBlend products to meet the evolving needs of your business today.

legend	
	Environmentally Friendly Products



PROBLEND™



# warewash

Convenience. Confidence. Health.

ProBlend's line of complete warewash cleaning solutions removes the hassle from kitchen and facility cleaning and sanitation, offering employees a healthier and safer work environment and guests a worry-free dining experience.





## Endorsed by CHEF ZACK POLANI

With a career spanning over thirty years, Chef Zack Polani honed his craft at the prestigious Le Cordon Bleu in Paris, France and has become a true master in delivering culinary perfection and excellence. The Luxury Palace Group community relishes the brilliance of his culinary creations, cherishing each moment spent savoring his exquisite dishes. Through his relentless pursuit of perfection and a genuine passion for the culinary arts, Chef Polani stands as a beacon of culinary brilliance, continually setting new standards of excellence that leave a lasting impression on all fortunate enough to experience his extraordinary talents.

*"ProBlend, LabTech, Warewash, & Workforce are in all my kitchens as every successful kitchen starts in the dishwasher & ends in the dishwasher."*

## High Temperature Systems



### CRYSTAL

**20740**  
4/1 GAL • 5 GAL

#### Chlorinated High Temp Detergent.

Liquid detergent with high alkalinity and extra destaining properties. It contains polymeric dispersants to work scale free in water with high solids.



### SOLID FORCE

**21195**  
4/8 LB

#### Solid Dishwashing Detergent.

Premium high temperature dishmachine detergent provides excellent cleaning ability, free rinsing and use cost. For use in solid dispensing equipment.



### ENCAP DISH

**13920**  
4/10 LB

#### Encapsulated Dishwashing Detergent.

Powdered detergent contains chlorine, chelators and dispersing chemicals, which bonded together offer excellent results and use cost. Encapsulated to provide a closed loop detergent system.



### SOLID FORCE NP

**21198**  
4/8 LB

#### Solid Non-Phosphate Detergent.

Premium high temperature dishmachine detergent provides excellent cleaning ability, free rinsing and use cost. For use in solid dispensing equipment.



### RINSE FREE

**14409**  
4/1 GAL • 5 GAL

**Hard Water Rinse Aid.** Creates sparkling spot-free results under challenging conditions. Defoaming and sheeting agents accelerate dry time by reducing the surface tension on tableware and aids in defoaming wash tanks. *For use in HT and LT applications.*



### SOLID METAL POWER

**21277**  
4/8 LB

#### Solid Metal Safe Dishwashing Detergent.

High temperature detergent that is gentle and safe for soft metals including aluminum and pewter. Excellent cleaning, free rinsing and use cost. For use in solid dispensing equipment.



### SPARKLE

**21945**  
4/1 GAL • 5 GAL

#### Premium Dishwashing Rinse.

Concentrated liquid drying agent for hard to soft water. It contains defoamers, chelating agents, mild acid and is highly active. Leaves glasses and flatware spotless. *Great in All Temp Systems too!*





## All Temperature Systems



### LT DETERGENT

**18138**  
4/1 GAL • 5 GAL

**All Temperature Detergent.** Economically formulated, alkaline dishmachine detergent provides the best results when used in medium to soft water.



### HW LT DETERGENT

**18145**  
4/1 GAL • 2.5 GAL • 5 GAL

**Hard Water All Temperature Detergent.** Specifically designed for hard water applications HW LT Detergent keeps your dishes clean and sparkling for great customer satisfaction.



### LT RINSE AID

**20733**  
4/1 GAL • 2.5 GAL • 5 GAL

**All Temperature Rinse.** Economical anti-spotting drying agent and anti-foamer breaks down the surface tension of water on glasses and silverware. The result is sheeting of rinse water and no water spots.



### RINSE FREE

**14409**  
4/1 GAL • 5 GAL

**Hard Water Rinse Aid.** Creates sparkling spot-free results under challenging conditions. Defoaming and sheeting agents accelerate dry time by reducing the surface tension on tableware and aids in defoaming wash tanks. *For use in HT and LT applications.*



### LT SAN

**05205**  
4/1 GAL • 2.5 GAL • 5 GAL

**All Temperature Sanitizer.** Concentrated and stabilized 10% sodium hypochlorite solution, blended to sanitize food service glassware, flatware, dishes, and utensils in commercial dishmachines. EPA Registered.

## Presoaks



### OXY COMPLETE

**14727**  
2/5 LB

**Powder Presoak & Oxygen Destainer.** This powdered formula effectively removes stains from plasticware, coffee cups, serving utensils, tea urns and cutting boards.



### SILVER BRILLIANT

**18340**  
4/1 GAL • 5 GAL

**Liquid Flatware Soak.** Enhanced performance silver and flatware brightening agent can be used to soak flatware prior to being washed. It keeps tarnish from forming and improves sheeting.



### SOLID SILVER BRITE

**11034**  
2/8 LB

**Solid Flatware Soak.** Mild alkaline formulation for presoaking and detarnishing silverware. It attacks residual soil on silver and flatware, digesting it and insuring its removal. Works well in all water conditions.



## CHEMICAL DISPENSERS

**WareDose 35** - For Detergent & Rinse

**WareDose 50** - For Detergent, Rinse & Additive

## Pot and Pan



### BAR GLASS

**11428**  
4/1 GAL

**Manual Bar Glass Detergent.** Low foaming manual glassware detergent specifically formulated to rinse freely and prevent water spotting. Loosens dried on soils, including lipstick. Effective in all water conditions. Floral fragrance.



### CLEAN PRO POT & PAN

**19865**  
4/1 GAL • 5 GAL

**All Purpose Pot and Pan Detergent.** This economical detergent produces thick, rich suds that penetrate and emulsify food soils and grease. Can be used in all water conditions. Baby powder fragrance.



### SAPPHIRE

**21000**  
2/1 GAL • 4/1 GAL • 2.5 GAL • 5 GAL

**Premium Pot and Pan Detergent.** Phosphate free pot and pan detergent produces long lasting suds. Sapphire is tough on soils yet gentle to skin. Works well in all water conditions. Pure clean fragrance.



**NEW**

### SAPPHIRE POWER SPRAY

**COMING Q2 2025**  
6/22 OZ

**Foaming Hand Dish Detergent.** Quickly removes grease and food residue, delivering the power of a traditional soak in just minutes. This ready to use formula only needs water for rinsing. Citrus fragrance. *Excellent laundry prespotter too!*



### SOLID CLEAN

**21280**  
2/5 LB

**Solid Pot and Pan Detergent.** Formulation is 100% active. Solid Clean is an excellent foamer, quickly cuts grease and tough soils and is mild to skin. Floral fragrance.

## Sanitizers and Disinfectants



### DD 5000

**13546**  
2/1 GAL • 4/1 GAL • 2.5 GAL • 5 GAL

**Third Compartment Sink Sanitizer.** Effectively cleans, sanitizes, and disinfects surfaces in hospitals, nursing homes, schools, food handling and processing areas, and institutional kitchens. EPA Registered.



### DSQ 10

**13960**  
2/1 GAL • 4/1 GAL • 5 GAL

**Third Compartment Sink Sanitizer.** Disinfectant, fungicide, mildewstat and virucide designed for hospitals, nursing homes, hotels & motels, institutional, industrial, and institutional kitchen use. EPA Registered.



**NEW**

### GUARDIAN

**COMING Q2 2025**  
6/1 QT

**RTU Food Contact Sanitizer, Disinfectant & Virucide.** Effective sanitizer for food contact surfaces in schools, restaurants, food handling and processing areas, bar and institutional kitchens. EPA Registered.



### 3-SINK DISPENSERS

**ProSink R** - Available for 1 or 2 products





## Cooking Surfaces



### ELIMINATOR PLUS

**27180**  
6/1 QT • 4/1 GAL

**Oven Cleaner.** Premium oven cleaner formulated with a blend of high alkaline, solvent based, organic detergents for dissolving heavy soils. It cleans fat, oil and grease from ovens, grills, stoves and hard surfaces. Orange fragrance.



### GREASE EASE

**14710**  
10/1.5 LB

**Deep Fat Fryer Cleaner.** Concentrated powder alkaline detergent formulation quickly emulsifies fat and grease in deep fryers. It aggressively removes grease and heavy oil based soils from kettle interior and exterior surfaces.



### HT GRILL CLEANER

**15210**  
6/1 QT

**Flat Top Grill Cleaner.** Removes grease, fat and carbon buildup from hot surfaces, such as grills and griddles. Works quickly and easily saving time and labor.



### NON-CAUSTIC OVEN & GRILL CLEANER

**PB00MAG02BA • 6/1 QT**

**Ultra Concentrated Ready To Use Oven Cleaner.** Dissolves heavy soils instantly removing carbonized buildup, fat, oil and grease found on surfaces where high heat is present. Safe on aluminum. Minimal odor.

## Cleaners and Degreasers



### CITRA SOL

**RD102**  
4/1 GAL

**All Purpose Cleaner and Degreaser.** Removes fat and petroleum based soils. Bold citrus fragrance.



### HD PRIDE CLEANER

**15770**  
4/1 GAL

**Heavy-Duty Degreaser.** Alkaline and butyl solvent based degreaser penetrates and removes the toughest soils quickly and easily. HD Pride Cleaner contains alkalis, sequestrants and wetting agents for powerful heavy-duty degreasing.



### LAVENDER EXPRESS

**16600**  
4/1 GAL • 5 GAL

**Multi-Purpose Cleaner.** Boldly fragranced Lavender Express is a special multi-purpose cleaner and degreaser formulated for removing soil, grease and grime from any washable surface.



# RTU Products

*Quick Cleaning Solutions*

## Air Care



### EXTREME CANNABIS ODOR OUT

**PB0011063AA** · 6/1 QT

Ready to Use Neutralizer for Cannabis Odors. Penetrates to permanently destroy the “skunk-like” odor of marijuana instantly.



### EXTREME SMOKE ODOR OUT

**PB0011062AA** · 6/1 QT

Ready to Use Smoke & Pet Urine Odor Neutralizer. Penetrates porous surfaces neutralizing cigarette, cigar and pipe odors instantly. Also eliminates odors from pet urine.



### RACHAEL TOLLIVER RTU LINEN FRESH

**PB0027258AA** · 6/1 QT

Ready to Use Fabric Refresher & Softener. Refreshes fabrics and eliminates odors at the source including smoke, mildew, pet odors and urine. Relaxing scent of lavender, jasmine and a hint of apple.

## Disinfectants



**NEW**

### PROTECT24

**PB0004629AA** · 6/1 QT

24 Hour Sanitizer/Disinfectant. Provides cleaning performance together with disinfection of harmful bacteria and viruses including SARS-CoV-2. Eliminates 99.9% of bacteria for 24 hours. Ready to use. Residue free finish.



**NEW**

### GUARDIAN

**COMING Q2 2025** · 6/1 QT

RTU Food Contact Sanitizer, Disinfectant & Virucide. Effective sanitizer for food contact surfaces in schools, restaurants, food handling and processing areas, bar and institutional kitchens. EPA Registered.

## Cleaners



### CLEAR VIEW RTU

**PB0023140AA** · 6/1 QT

Ready To Use Glass & Hard Surface Cleaner. Can be used for cleaning glass, stainless steel, plastic, vinyl, and tile. Use for a spotless streak-free shine on most hard surfaces.



### ELIMINATOR PLUS

**PB0027180AA** · 6/1 QT

Oven Cleaner. Premium oven cleaner formulated with a blend of high alkaline, solvent based, organic detergents for dissolving heavy soils. It cleans fat, oil and grease from ovens, grills, stoves and hard surfaces. Orange fragrance.



### ERASER

**PB0012690AB** · 6/1 QT

Mold & Mildew Stain Remover and Bathroom Cleaner. Powerful non-acid cleaner and destainer removes challenging stains including mildew, food stains, and discoloration. Contains chlorine bleach. Floral fragrance. Ready to use.



**NEW**

### GLASS DEFENSE

**COMING Q2 2025** · 6/1 QT

Ready To Use Glass Cleaner & Protectant. Fog-free, residue repelling, and water sheet formula keeps surfaces clean longer. Leaves a streak free shine on glass, mirrors, stainless steel and most hard surfaces.



### HT GRILL CLEANER

**PB0015210AA** · 6/1 QT

Flat Top Grill Cleaner. Removes grease, fat and carbon buildup from hot surfaces, such as grills and griddles. Works quickly and easily saving time and labor.

# Specialty Cleaners



## CHLOR CLEAN

12310  
4/1 GAL

**High-Foaming Chlorinated Cleaner.** Liquid alkaline cleaner rapidly removes protein, fat, and carbohydrate soils on equipment and hard surfaces. Use in meat rooms and bakeries. Phosphate free. *Great alkaline floor cleaner!*



## CLEAN FREEZE

23330  
4/1 GAL

**Freezer Cleaner.** Low foam alkaline cleaner formulated for use in refrigerated and freezer environments on a broad range of surfaces and most metals. Provides rapid penetration of dirt, grease and protein soils.



## ENHANCE

PB00QUE01AA · 12/14.5 OZ

**Food Grade Stainless Steel Cleaner.** Aerosol spray. Oil based cleaner brightens, polishes and protects stainless steel by forming a shield that resists watermarks and rust. Also great for aluminum, chrome, Formica®, porcelain and ceramic tile. Lemon fragrance.



## GREASE FREE

10661  
4/1 GAL · 5 GAL

**Drain and Grease Trap Treatment.** Designed to accelerate the bioremediation process, Grease Free controls the grease and odors found in drain lines and grease traps with its bacteria that digests grease and gives off CO2 and water as byproducts. Great for use around urinals to get rid of bodily fluid odors. Neutroleum fragrance.



## PRODUCESHIELD+

05089  
2.5 GAL

**Ultra Concentrated Fruit & Vegetable Wash.** No-Rinse produce wash solution enhances food safety, reducing spoilage and improving textural characteristics for processed fruits and vegetables. A proprietary blend of all GRAS ingredients.



## SCALAWAY

21020  
4/1 GAL

**Hard Water Remover.** Concentrated non-foaming liquid lime scale remover. For use in dishmachines and to descale steam tables, stainless steel and nonporous kitchen surfaces not damaged by acidic solutions. Removes rust.

# PROBLEND™

*Electronic service reporting  
across the globe.*

### Get the ProBlend experience

#### WAREWASH

- Safe Food Handling Report
- Warewash Service Report

#### HOUSEKEEPING

- Guest Room Inspection Report

#### LAUNDRY

- Laundry Service Report

#### GENERAL

- Inventory Order Report
- ProBlend Order Form
- Bill of Lading

## Floor Cleaners



### BIO FORCE

**11680**  
4/1 GAL

**Heavy-Duty Floor Cleaner.** For commercial kitchens where concrete, grout and quarry tile floors make for tough work. Bio Force helps improve traction and as an added bonus, helps control odors. Neutroleum fragrance.



### DAILY CLEANER & DEGREASER

**21150**  
2/1 GAL • 4/1 GAL • 2.5 GAL • 5 GAL

**Hard Surface Floor Cleaner.** Use as the first line of defense in the battle against slippery floors. This hard surface floor cleaner greatly improves surface traction, reduces the occurrence of polymerization, when used daily, and leaves surfaces residue free.



### EVO FLOOR CLEANER

**BIO23**  
4/1 GAL

**Microbial Floor Cleaner & Drain Maintainer.** Delivers superior floor cleaning, odor control, drain and trap maintenance, environmental benefits and flexibility. Effectively removes the food sources of fruit flies and controls odors in dumpsters. Fresh fragrance.



### FLOOR TOUCH

**18570**  
4/1 GAL • 5 GAL

**All Purpose Neutral Floor Cleaner.** Cleans oil, grease, grime, dirt, inks, and most other soils. Will not remove or harm floor finishes. Citrus fragrance.



### GALAXY-41 ENVIRO MOP

**BIO23**  
2/1 GAL

**Microbial Floor Cleaner.** Everyday use floor cleaner and drain maintainer. Delivers superior floor cleaning, odor control, drain and trap maintenance, environmental benefits and flexibility. Effectively removes the food sources of fruit flies. Fresh fragrance.



# PROBLEND™

## ASPIRE

### ASPIRE - ANDRON

**27261**  
2/1 GAL

**Ultra Concentrated Dishmachine Detergent.** Designed for all temperature dishmachines. This product is highly active and for heavy-duty use in medium to hard water conditions.



### ASPIRE - SPONDREL

**27262**  
2/1 GAL

**Ultra Concentrated Drying Agent.** Designed for all temperature dishmachines. It defoams and breaks down the surface tension of water at high dilutions.



Safe Link Closed Loop Chemical Management System for easy use of chemicals and change-out

### Features & Benefits:

- Minimizes operational and shipping costs
- Concentrates allow for more storage capacity
- Consistent measuring for excellent cleaning results and use cost
- Super concentrated formulations for efficiency and sustainability
- Excellent results in hard water conditions

Over **2X MORE** concentrated than regular warewash systems







PROBLEND™



workforce™

Specialty. Service. Solutions.

Workforce™ chemicals are designed for service technicians who need specialty cleaning and degreasing solutions for the equipment they repair and service. Whether used in the field or sold at your parts counter, the Workforce™ foodservice and hospitality line is a force to be reckoned with.



IT'S TIME TO  
**Reimagine Your Chemical Program**

The Workforce™ brand is under license and partnership with Magnus®.



## OVEN SHIELD

**PB00MAG02BB** · 2.5 GAL

Combi-Oven Rinse Aid. This advanced formula helps reduce lime scale build-up and ensures maximum rinse action for quick drying. Designed for use in combi-ovens with an automatic cleaning system. Ready to use formula.



## OVEN REVIVE (Liquid)

**PB00MAG02BC** · 2.5 GAL

Combi-Oven Detergent. Revolutionary formula that quickly emulsifies grease and food particles to leave your oven sparkling clean in one cycle. Designed for use in combi-ovens with an automatic cleaning system. Can also be used as a spot cleaner to pre-treat heavy-duty soils with a manual sprayer. Ready to use formula.



## OVEN REVIVE (Tablets)

**PB00MAG02AZ** · 50 TABLETS

Ultra Concentrated Combi-Oven Detergent Tablets. Designed exclusively for automatic systems in combi-ovens. This system will extend the life of your combi-oven and keep the interior looking new.



## E/S NI-SAFE ICE MACHINE CLEANER

**PB00MAG02AF** · 4/1 GAL

Extra Strength Descaler. For use in commercial ice machines, soft drink dispensers, coffee urns and humidifiers. Safe on stainless and nickel-plated steel.



## NI-SAFE ICE MACHINE CLEANER

**PB00MAG02AD** · 4/1 GAL

Descaler. Non-foaming, non-fuming cleaner that quickly removes scale from stainless and nickel-plated steel in commercial ice machines.



## NON-CAUSTIC OVEN & GRILL CLEANER

**PB00MAG02BA** · 6/1 QT

Ultra Concentrated Ready To Use Oven Cleaner. Dissolves heavy soils instantly removing carbonized buildup, fat, oil and grease found on surfaces where high heat is present. Safe on aluminum. Minimal odor.







PROBLEND™

# 911 emergency services

Safe. Clean. Equipment.

Emergency services personnel go into dangerous situations everyday, exposing themselves to toxins. At the front line of defense for these heroes is their safety equipment. Cleaning this equipment after exposure and making it safe for its next use is the purpose our Emergency Services product line.



# SCBA Concentrate

Protective Gear Decontamination Detergent  
*Detergente Protector de Descontaminación de Engranajes*

**QUICK, EASY, SAFE.**

Easy Decontamination of Complete SCBA

Item Code Case  
PB0010967AA 2.5 GAL

- Use with SCBA DECON WASHER machine  
[Full description of machine on page 34](#)
- Removes soot and dangerous carcinogens from SCBA (Self Contained Breathing Apparatus)
- Intended for use by firefighters and first responders
- Mild and low-foaming detergent



Endorsed By: Solo Rescue®  
832.321.3260 | [www.solorescue.com](http://www.solorescue.com)



PROBLEND™



# hand care

Clean. Safe. Healthy.

It's simple. It's universal - Clean, germ-free hands mean healthier living, working and learning environments. The ProBlend Hand Care line offers a variety of effective soaps and hand sanitizers that are easy and convenient to install and refill, and that are excellent choices for schools, healthcare, food service, hospitality and janitorial applications.



## Hand Care Cartridge System



### ALCOHOL FOAMING HAND SANITIZER

FRAGRANCE FREE  
**PB00CUS08AA** · 2/1.25 L

**Foaming Hand Sanitizer.** Highly effective at removing bacteria from skin. Gentle on skin, leaving skin clean and smooth. FDA Registered.



### ANTIBACTERIAL FOAMING HAND SOAP

CITRUS SPICE SCENT  
**PB00CUS08AB** · 3/1.25 L

**Foaming Hand Wash.** Provides a cleaner, better experience while promoting a safe, healthy environment. FDA Registered.



### E3 FOAMING HAND SANITIZER

DYE & FRAGRANCE FREE  
**PB00CUS08AC** · 3/1.25 L

**All-In-One Hand Sanitizer and Cleanser.** Kills 99.99% of common germs. Pre-Lathered for quick, convenient dispensing, leaving little room for mess. FDA Registered.



### FOAMING HAND SOAP

TROPICAL SCENT  
**PB00CUS08AD** · 3/1.25 L

**Foaming Hand Wash.** Creates rich, creamy lather right from the dispenser. Leaves hands soft and smooth, while effectively removing tough soils.



### MANUAL DISPENSER

**PB00OPH02AB** · BLACK  
**PB00OPH02AA** · WHITE

Manual hand care product dispenser for 1.25 L cartridges. Ergonomic and easy to use with a low force presser and one-handed dispensing. Up to 3125 hand washes/sanitizes per cartridge.

- Compact Footprint
- ADA Compliant
- High-grade ABS Plastic
- Easy Cartridge Loading



### TOUCH FREE DISPENSER

**PB00OPH02AD** · BLACK  
**PB00OPH02AC** · WHITE

Touch-free hand care product dispenser for 1.25 L cartridges produces automatic and reliable sensing with LED indicator light signaling use and low battery. Its low energy consumption allows up to 90,000 activations between battery changes.



### DRIP TRAYS

**00976** · BLACK  
**00980** · DRIP TRAY - WHITE

Fits both Manual and Touch-Free dispensers.



## Hand Sanitizers



### ALCOHOL FOAMING HAND SANITIZER

FRAGRANCE FREE  
**PB00CUS08AG** · 2/1 GAL

**Foaming Hand Sanitizer.** Highly effective at removing bacteria from skin. Gentle on skin, leaving skin clean and smooth. FDA Registered.



### E3 FOAMING HAND SANITIZER

DYE & FRAGRANCE FREE  
**PB00CUS08AF** · 2/1 GAL

**All-In-One Hand Sanitizer and Cleanser.** Kills 99.99% of common germs. Pre-Lathered for quick, convenient dispensing, leaving little room for mess. FDA Registered.

## Hand Soaps



### ANTIBACTERIAL FOAMING HAND SOAP

CITRUS SPICE SCENT  
**PB00CUS08AE** · 2/1 GAL

**Foaming Hand Wash.** Provides a cleaner, better experience while promoting a safe, healthy environment. FDA Registered.



### CLEAN & SIMPLE

LEMON SCENT  
**PB0015485AB** · 4/1 GAL

**Economical Liquid Hand Soap.** Formulated for excellent quality and use cost. Rich lather, mild pleasant fragrance and satisfaction for guests and facility management alike.  
*Doubles as a pot and pan detergent.*



### AMENITIES HAND SOAP

ALMOND SCENT  
**PB00RD120AB** · 4/1 GAL

**White Lotion Hand Soap.** Luxurious ingredients create rich, creamy lather that moisturizes as well as it cleans. It pampers hands, leaving them soft and smooth, while effectively removing tough soils.



### CLEAR SILK

ALMOND SCENT  
**PB0027230AB** · 4/1 GAL

**Dye Free Lotion Hand Soap.** Luxurious ingredients create rich, creamy lather that moisturizes as well as it cleans. It pampers hands, leaving them soft and smooth, while effectively removing tough soils.



### BLUE FOAMING SILK

MOUNTAIN SPRING SCENT  
**PB0027234AF** · 2/1 GAL

**Foaming Hand Soap.** Creates rich, creamy lather right from the dispenser. Leaves hands soft and smooth, while effectively removing tough soils.



### CLEAR FOAMING SILK

ALMOND SCENT  
**PB0027235AA** · 4/1 GAL

**Dye Free Foaming Hand Soap.** Creates rich, creamy lather right from the dispenser. It pampers hands, leaving them soft and smooth, while effectively removing tough soils.



# Protect24

24 Hour Residual Sanitizer | Multi-Purpose Cleaner



## Provides a Clean that Lives On

**CONFIDENCE** in 24 hour bacteria sanitizing shield: Rigorously tested and EPA-registered. Rest assured surfaces stay cleaner between cleans – up to 24 hours with *Protect24*.

**EFFICIENCY unleashed:** The technology behind *Protect24* penetrates tough stains cutting down cleaning time and provides a true clean that lives on.

**COMMITMENT to clean:** Adopting *Protect24* technology signals your mission to define a new standard of cleanliness.

**CLEANING PROTOCOLS simplified:** *Protect24* comes ready-to-use, eliminating operational pain points that come from dilutable products.

## PRODUCT SNAPSHOT

- Multi-Purpose Cleaner
- Disinfectant
- Sanitizes up to 24 hrs
- No Smear Residue
- Patented Formula
- For use on Hard, Non-Porous Surfaces



## CONSUMER & PRO USE

- Door Knobs
- TV Remotes
- Public Spaces
- High Touch Areas
- Railings
- Bathrooms
- & More



Item Code	Case
PB0004629AA	6/1 QT
PB0004629AB	2/1 GAL

# PROBLEND™



PROBLEND™



# housekeeping

Fresh. Sparkling. Clean.

From guest rooms to public restrooms and every room in between, ProBlend housekeeping solutions go far Beyond Clean... They brighten, sanitize, disinfect, deodorize, sparkle, polish, protect and maintain rooms and fixtures from floor to ceiling. For the health and safety of occupants and guests. For the benefit of your organization.





## All Purpose Cleaners



### PROTECT24

04629 • 6/1 QT • 2/1 GAL

#### 24 Hour Sanitizer/Disinfectant.

Provides cleaning performance together with disinfection of harmful bacteria and viruses including SARS-CoV-2. Eliminates 99.9% of bacteria for 24 hours. Ready to use. Residue free finish.



### CITRUS CLEAN

15120  
4/1 GAL

Citrus Degreaser. Concentrated all purpose cleaner/degreaser contains d-limonene, a natural citrus solvent. It provides exceptional cleaning performance of both fat and petroleum based soils. Removes adhesive residue. Citrus fragrance.



### CREAM CLEAN

COMING SOON • 12/1 QT

Cream Cleanser. Nonabrasive cleanser safely removes stains and polishes surfaces including porcelain, chrome, plastic, fiberglass, stainless steel, brass, copper, etc.



## Q CLEANERS

**Cleans & Deodorizes in One-Step!**

**Quaternary Cleaner & Odor Counteractant.** Use on hard surfaces such as floors, walls, in dumpsters, and other areas where odors can be a problem. Helps prevent mildew growth.

*Great all-in-one product for the bathroom!*

*Available in 4/1 Gallon cases in three scents:*

LAVENDER • PB0016769AA | LEMON • PB0016760AB | PINE • PB0019740AA

## Restroom Care



### ERASER

12690  
6/1 QT

Mold & Mildew Stain Remover and Bathroom Cleaner. Powerful non-acid cleaner and destainer removes challenging stains including mildew, food stains, and discoloration. Contains chlorine bleach. Floral fragrance. Ready to use.



### ANTIMICROBIAL URINAL MAT

PB00WIZ01AB • 12/CASE

Urinal Mat. Inhibits odors with built-in antimicrobial compounds and lasts up to a month in most locations. No maintenance, just mop/wipe around the mat as needed. Its carpet like texture and fiber configuration promote rapid air drying.



### SPLASH HOG URINAL SCREEN

PB00WIZ01AA • 6/CASE

Urinal Screen. Designed to reduce splash back and provide a clean pleasant fragrance. The powerful Clean fragrance lasts for 60 days and replaces the need for a room deodorizer.

## Polishes



### ENHANCE

PB00QUE01AA · 12/14.5 OZ

Stainless Steel Cleaner. Aerosol spray. Oil based cleaner brightens, polishes and protects stainless steel by forming a shield that resists watermarks and rust. Also great for aluminum, chrome, Formica®, porcelain and ceramic tile. Lemon fragrance.



### METAL BRITE

22020 · 6/1 QT

Ready To Use Stainless Steel Cleaner & Polish. Mineral oil based. Removes grease, soils, water stains, fingerprints and tarnish from surfaces. It leaves a brilliant shine on polished metal surfaces. Lemon fragrance.



### REJUVENATE

PB00QUE01AB · 12/17 OZ

Beeswax Furniture Polish. Aerosol spray. Cleans all wood surfaces. Restores color and gloss, eliminates small scratches and blemishes and replaces essential oils in natural or treated wood surfaces. Lemon fragrance.

## Air Care



### EXTREME CANNABIS ODOR OUT

PB0011063AA · 6/1 QT

Ready to Use Neutralizer for Cannabis Odors. Penetrates to permanently destroy the "skunk-like" odor of marijuana instantly.



### EXTREME SMOKE ODOR OUT

PB0011062AA · 6/1 QT

Ready to Use Smoke & Pet Urine Odor Neutralizer. Penetrates porous surfaces neutralizing cigarette, cigar and pipe odors instantly. Also eliminates odors from pet urine.



### RACHAEL TOLLIVER LINEN FRESH RTU

PB0027258AA · 6/1 QT

Ready to Use Fabric Refresher & Softener. Refreshes fabrics and eliminates odors at the source including smoke, mildew, pet odors and urine. Relaxing scent of lavender, jasmine and a hint of apple.

## Glass Cleaners



### CLEAR VIEW

PB0023140AA · 6/1 QT (Ready To Use)  
PB0023040AA · 4/1 GAL (Concentrate)

Glass & Hard Surface Cleaner. Can be used for cleaning glass, stainless steel, plastic, vinyl, and tile. Use for a spotless streak-free shine on most hard surfaces.



### GLASS DEFENSE

COMING Q2 2025 · 6/1 QT

Ready To Use Glass Cleaner & Protectant. Fog-free, residue repelling, and water sheet formula keeps surfaces clean longer. Leaves a streak free shine on glass, mirrors, stainless steel and most hard surfaces.

## Carpet Care



### SPOTS AWAY

PB00QUE01AC · 12/18 OZ

Water-Based Carpet Spot & Stain Remover. Aerosol spray. Effectively cleans all types of spots and stains without damaging carpet fabrics. Neutralizes odors and leaves a pleasant fragrance.



### STAIN PRO E

14050 · 6/1 QT

Fabric & Carpet Stain Remover with Enzymes. Powerful enzyme formula for use in the pre-spotting process and as a carpet spotter. Removes challenging grass, ink, chocolate, ketchup, gravy and other food color stains. Kiwi peach fragrance.

# AMENITIES

## HYGIENE SYSTEM

### Sustainable Alternative to Amenities

#### Cartridges & Dispensers

- Built-in viewing window prevents outages for guests
- Easy bulk fill with reusable pumps
- Sophisticated design with easy change out
- Locking mechanism prevents tampering and vandalism
- Mold prevention

#### Bulk Refill - 4/1 Gallon Case

- Easy to use hand pumps makes refilling simple and mess-free process
- Sustainable with less plastic waste than non-refillable cartridges
- Matching Gallon & Cartridge labels to easily identify the correct refill product.

#### Dispensers & Pumps

Item Code	Type
00038	1 Product White
00040	1 Product Black
00036	Pump

#### Cartridges

Item Code	Type
00026	Shampoo
00027	Conditioner
COMING SOON	Hair & Body Wash
00028	Body Wash
00029	Hand Soap
COMING SOON	Lotion

#### Bulk Refill - 4/1 Gallon

Item Code	Type
<b>PB00SIM06AA</b>	<b>Shampoo</b>
<b>PB00SIM06AB</b>	<b>Conditioner</b>
COMING SOON	Hair & Body Wash
<b>PB00SIM06AC</b>	<b>Body Wash</b>
<b>PB00RD120AB</b>	<b>Hand Soap</b>
<b>PB00SIM06AD</b>	<b>Lotion</b>



#### Products Available

- Shampoo
- Conditioner
- Hair & Body Wash
- Body Wash
- Hand Soap
- Lotion



**PROBLEND™**





# Productivity at its Best... Precise Measuring Plus Powerful Cleaning!



# PROBLEND™

## GALAXY DISPENSING SYSTEMS

Safe Link Closed Loop Chemical Management System for easy use of chemicals and change-out

ProBlend's GALAXY Dispensing System makes filling bottles, buckets and equipment easier, safer, and more accurate. It is the cleaning industry's comprehensive housekeeping system, designed for hospitality, building service contractors, schools, government facilities and other businesses who need safe and flexible dilution and dispensing of product.

GALAXY has a sleek design and modern appearance in any housekeeping environment, plus multiple features to enhance productivity and dispensing flexibility. It offers the convenience of one-handed bottle filling and point-of-use remote bucket fill activation, with ultimate flexibility from 1 to 8 products, or multiple dilutions for a single product.



### Features & Benefits:

- Consistent measuring for excellent cleaning results and use cost
- A range of housekeeping products for every facility area
- Formulas designed for the environment and green care programs
- Remote fill option for easy filling of buckets and scrubbers when location flexibility is required



- Super concentrated formulations for efficiency and sustainability
- Fully color coded equipment with icons for training in all languages
- Simple one-hand bottle fill offers more flexibility when filling spray bottles
- 1 gallon-per-minute flow control disc improves dispensing accuracy with ultra lean dilutions

# GALAXY Dispensing System - Odor Eliminators & Bathroom Cleaners



## GALAXY-10 LEMON GINGER

27215 • 2/1 GAL

### FABRIC REFRESHER, SOFTENER & ODOR COUNTERACTANT.

Refresh & eliminate odors on sheets and towels breathing new life into a space with this bright spring scent blooming with citrus, ginger and rose.



## GALAXY-20 BATH FORCE ULTRA

27263 • 2/1 GAL

**BATHROOM.** Ultra Concentrated Bathroom Cleaner. Hard water formula for all restroom surfaces including tile, tubs, showers and toilet areas. Removes mold and mildew from porcelain and chrome. Long lasting lavender fresh fragrance.



## GALAXY-11 LUXURY SUITE

27259 • 2/1 GAL

### FABRIC REFRESHER, SOFTENER & ODOR COUNTERACTANT.

Refresh & eliminate odors on sheets and towels with the indulgent, elegant scent of white tea, geranium and cedarwood. Enjoy the scent of five star linens anywhere.



## GALAXY-21 BATHROOM DISINFECTANT

27240 • 2/1 GAL

**BATHROOM.** Non-acid Bathroom Cleaner. Cleans, disinfects and deodorizes in a single step. Concentrated formulation for use in hotels, nursing homes and assisted living facilities. EPA registered.



## GALAXY-12 LINEN FRESH

27225 • 2/1 GAL

**FABRIC REFRESHER, SOFTENER & ODOR COUNTERACTANT.** Specially designed odor counteractant to refresh sheets and towels for increased guest satisfaction scores. Relaxing scent of lavender, jasmine and a hint of apple.



## GALAXY-22 GREEN CARE OXYGEN POWER

14081 • 2/1 GAL

**BATHROOM.** Non-Corrosive Bathroom Cleaner. Concentrated, environmentally preferable cleaner, fortified with natural citrus cleaning power and hydrogen peroxide. It attacks stubborn soils and stains on virtually all surfaces not harmed by water. Citrus fragrance.



## GALAXY-14 LAVENDER FRESH

27205 • 2/1 GAL

### FABRIC REFRESHER & SOFTENER

Specially designed to refresh sheets and towels for increased guest satisfaction scores. Let your cares drift away with the relaxing scent of lavender, jasmine and peach blossom layered with warm vanilla musk.



## GALAXY-25 CITRUS TUB & TILE

27210 • 2/1 GAL

**BATHROOM.** Acid Bathroom Cleaner. Concentrated, non-corrosive, non-fuming acid cleaner removes hard water scale, alkaline detergent build-up, dirt and rust. Renews original brightness on stainless steel and chrome surfaces. Lemon fragrance.



## GALAXY-15 POLYNESIAN TIARE

13685 • 2/1 GAL

**AIR FRESHENER.** Neutralizes odors while providing a pleasing and long lasting scent in areas prone to odors. Enjoy the cool ocean breezes swirling with sweet flower petals engulfed with teak wood.



# GALAXY Dispensing System - Glass, Floor & All Purpose Cleaners



## GALAXY-31 CLEAR VISION

23040 • 2/1 GAL

**GLASS.** Highly concentrated glass and hard surface cleaner creates a spotless, streak-free shine. In diluted form it can be used for cleaning glass, stainless steel, plastic, vinyl, and tile.



## GALAXY-40 EASY MOP

18570 • 2/1 GAL

**FLOOR.** Neutral Floor Cleaner. Easy Mop is solvent free and won't dull high gloss floor finishes. Environmentally friendly and phosphate free, it easily removes dirt, oil and grease, leaving a pleasing citrus fragrance.



## GALAXY-41 ENVIRO MOP

BIO23 • 2/1 GAL

**FLOOR.** Microbial Floor Cleaner. Everyday use floor cleaner and drain maintainer. Delivers superior floor cleaning, odor control, drain and trap maintenance, environmental benefits and flexibility. Effectively removes the food sources of fruit flies. Fresh fragrance.



## GALAXY-50 GREEN OXY PLUS



14081 • 2/1 GAL

**ALL PURPOSE.** Fortified with hydrogen peroxide and natural citrus cleaning power Green Oxy Plus attacks stubborn soils and stains on any surface not harmed by water. Environmentally preferred cleaner. Citrus fragrance.



## GALAXY-51 WAVE PLUS

RD102 • 2/1 GAL

**ALL PURPOSE.** All purpose cleaner removes stains and soils from hard surfaces including furniture, countertops and non-skid tub surfaces. Bold citrus fragrance.



## GALAXY-53 LAVENDER PLUS

16600 • 2/1 GAL

**ALL PURPOSE.** Unique multi-purpose concentrated cleaner and degreaser, formulated for removing soil, grease and grime from any washable surface. Bold lavender fragrance.



## GALAXY-54 NEUTRAL DISINFECTANT

27241 • 2/1 GAL

**ALL PURPOSE.** Disinfectant, cleaner and deodorizer with neutral pH formula. Concentrated formulation for use in hotels, nursing homes and assisted living facilities. EPA registered.

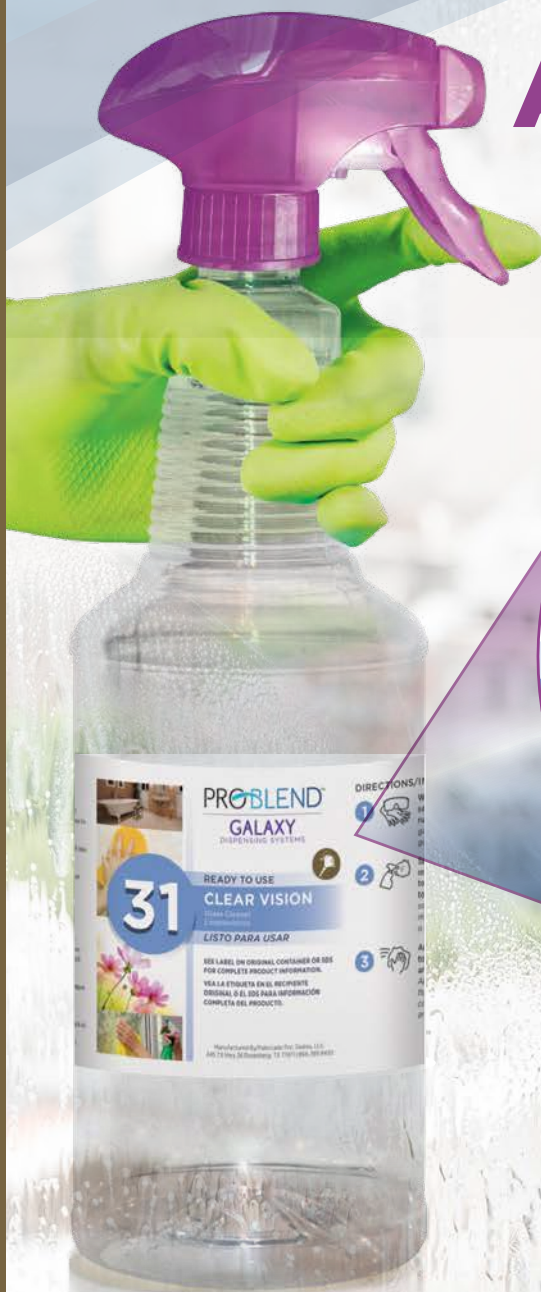




# A.C.E.

Accessible  
Confidence  
Economical

## Ready To Use label design for GALAXY products



**It's more ACCESSIBLE** - Expanding our original bilingual directions, we've added easy to follow numbered steps and icons.

**Create's CONFIDENCE** -How, when and what is needed to use the product is quickly found with intuitive icons and easy to follow numbered steps.

**Even more ECONOMICAL** - Ease of use and understanding translates right back to the wallet, with correct product usage saving both time and money.



PROBLEND™



# laundry

Bright. Soft. Impressive.

Brighter colors. Whiter whites. Softer towels and sheets. Cleaner uniforms. Whatever your commercial or industrial laundry need, ProBlend can help with high performance solutions and efficient systems – all designed to impress employees and guests and brighten your bottom line.





## Detergent Boosters



### BREAK OUT

**16900**  
5 GAL • 15 GAL • 55 GAL

**Alkali Booster.** Concentrated laundry break contains soil dispersants, suspending agents, alkaline builders and water conditioners. Ideal for use where heavy grease based soils occur. Can be used in all water conditions.



### CONDITIONER SE

**21025**  
5 GAL

**Laundry Conditioner.** Enhances laundry detergent performance in hard water environments. Water conditioner may be metered directly into laundry water supply.



### LINEN BOOST

**22679**  
5 GAL

**Solvent Detergent Booster.** This product provides a boost of power to remove extra heavy oily and greasy soils. Works best as a prewash or use as a detergent additive on medication, food, oil and adhesive soils.

## Detergents - Powder



### ENZYME CLEAN

**14190**  
4/9 LB • 50 LB

**Multifunctional Laundry Detergent.** Contains color safe bleach and optical brighteners. Use as a presoak for naturally occurring stains. Works in low temperatures and will not harm fabrics. Citrus fragrance.



### NEW CLEAN

**12540**  
50 LB

**High Efficiency Powder Detergent.** Acceptable for use in HE front loading, low foam washers. New Clean is formulated for soils in hotels, motels, nursing homes and dormitories. Citrus fragrance.



### NEW CLEAN III

**12665**  
50 LB

**Value Added Powder Detergent.** Use to gently remove soils and leave clean, refreshed linen. Use in institutional and commercial industries, in both front loading and top loading washing machines. Citrus fragrance.



### OPTI-BRITE

**11691**  
50 LB

**All-In-One Powder Detergent.** This premium detergent drastically reduces bleaching with regular use. Its intense optical brightening system produces brilliant colors and bright whites. Effective at all temperatures. Clean fresh fragrance.



# Detergents - Liquid



## DETERGENT PLUS

**17005**  
5 GAL • 15 GAL • 55 GAL

**Oil Releasing Detergent.** Great liquid laundry detergent for oily and greasy soils like lipstick, shoe polish and sun tan lotion. It has a synergistic blend of surfactants plus powerful dispersants to emulsify and suspend soils. Citrus fragrance.



## SUDS ALL

**15780**  
5 GAL

**Unbuilt Laundry Detergent.** High-sudsing detergent with a moderate pH contains powerful surfactants to emulsify soils during the wash cycle. Best for light to medium soiled laundry in home style machines. Citrus fragrance.



## ENZYME POWER

**16905**  
5 GAL • 15 GAL

**Enzyme Liquid Laundry Detergent.** Simplify the laundering process by eliminating laundry break and sour steps. Enzyme Power does not require high alkalinity, can be used as a presoak and performs well in lower temperatures. Citrus fragrance.



## TRIBUTE



**27243**  
2/1 GAL • 2.5 GAL • 5 GAL • 15 GAL

**High Efficiency Laundry Detergent.** Powerful surfactants to clean linen, but at the same time treats fabric threads gently while removing soils. Cold and hot water formula. Clean fresh fragrance.

IMPROVED



## ES LAUNDRY BRIGHT

**23385**  
2.5 GAL • 5 GAL • 15 GAL

**Dual Detergent.** One shot low temperature liquid formulation consisting of alkaline builders blended with emulsifiers for commercial liquid laundry systems. Excellent for use on linens in hotels, motels, and nursing homes.



## VICTORY



**27245**  
2.5 GAL

**Dye & Fragrance Free Detergent.** *Hypoallergenic.* HE, High Efficiency, laundry detergent has powerful surfactants to remove soils, while at the same time is gentle on skin. Cold and hot water formula.



## WAVE

**13775**  
5 GAL • 15 GAL • 55 GAL

**Economical Laundry Detergent.** Uniquely formulated concentrate cleans and brightens linens and other fabrics with optical brighteners. For use in home and commercial machines.



## Destainers



### CHLOR WHITE

05205

2.5 GAL • 5 GAL • 15 GAL • 55 GAL

**Liquid Laundry Bleach.** Maximum strength liquid bleach. Safe on cotton and synthetic fabrics. Can be used as a soil removal aid or as a destaining presoak for blood and protein stains. Not for use on natural silk, wool or nylon fibers.



### OXY BRILLIANT

17150

2.5 GAL • 5 GAL • 15 GAL

**Color Safe Bleach.** Concentrated peroxide bleach blended for safe bleaching of colored fabrics, clothes and textiles. This extremely concentrated oxygen compound is safe for most fabrics and dyes when used as directed.

## Sour/Softener



### SOUR/SOFT PLUS

16898

5 GAL • 15 GAL

**Citrus fragrance.** Concentrated, economical, acid based neutralizer and anti-yellowing agent for use in commercial laundries. Sour/Soft Plus reduces the residual alkalinity in clothes and linens.

## Sour



### SANTEX

PB00EDM01AB • 5 GAL

**Ready To Use Liquid Fabric Sanitizer**  
Used in the final rinse, Santex is both self-sanitizing and bacteriostatic. This active antimicrobial finish continually kills newly acquired bacteria until laundered. Designed for on-premise laundries and smaller machines.



### SOUR ADVANCED

27242

5 GAL

**Ultra Concentrated Acid Neutralizer.** For commercial laundries provides superior pH control, and enhances white linen. Great for use in tunnel washers



### SOUR ALL

22630

5 GAL

**Laundry Neutralizer.** Concentrated acid based liquid neutralizer and anti-rust agent specially formulated for commercial laundries.



### SOUR EXTRA

16894

5 GAL • 15 GAL • 55 GAL

**Iron Removing Laundry Neutralizer.** Blended acid based liquid laundry neutralizer with superior iron/rust removing properties prevents and removes red iron spots, brightens yellowing linens and reduces pH to prevent browning when linens are ironed.



### SOUR FINISH

20160

50 LB

**Laundry Neutralizer Powder.** Concentrated acid based powdered neutralizer and anti-yellowing agent reduces the residual alkalinity in fabric. For use in commercial laundries.



## Softeners



### SOFT LAVENDER

27253  
5 GAL

**Lavender fragrance.** Concentrated ultra fabric softener with Soft Touch technology. Reduces static and leaves linen soft. *25% more fragrance!*

IMPROVED



### SOFT SELECT

27247  
2.5 GAL • 5 GAL • 15 GAL

**Springtime fragrance.** Concentrated ultra fabric softener with Soft Touch technology leaves linen smelling fresh.



### SOFT SUNSET

27249  
5 GAL • 15 GAL

**Island Escape fragrance.** Concentrated ultra fabric softener with Soft Touch technology. Reduces static and leaves linen soft.



### SOFT TOUCH

17340  
5 GAL

**Citrus fragrance.** Concentrated fabric softener for commercial and industrial automated laundry dispensing systems. Minimizes wrinkling, increases softness, reduces static electricity.

IMPROVED



### SOFT TOUCH PLUS

27071  
5 GAL • 15 GAL • 55 GAL

**April Fresh fragrance.** Concentrated fabric softener minimizes wrinkling, increases softness and reduces static electricity. Its controlled viscosity allows for uniform dispensing in commercial and industrial laundry applications.

## Sizing



### SIZE ALL

PB00ALP01AD • 5 GAL

**Laundry Starch for Natural Fabrics.** High performance blue emulsion elegantly imparts stiffness and body to linens. Size All is ideal for natural and polyester blends. It also does an excellent job with all other fabrics. Pleasant fragrance.

## Reclaim



### STAIN PRO 1

27170  
10/1.5 LB • 20 LB

**Engineered for White Linen.** Reclaims hard to remove stains missed in pre-spotting procedures or washing process. Stain Pro 1 in your operation will put linen back in service, saving you time and money.



### STAIN PRO 2

27175 • 10/1.5 LB

**Specifically for Colored Linen.** Stain Pro 2 reclaims challenging stains missed in the pre-spotting procedure, putting more linens back in service and ultimately saving money and time.



### STAIN PRO 3

04950 • 10/1 LB

**Designed for Removing Rust Stains from Linen.** One-step process added to the wash wheel will reclaim linen missed by pre-spotting. Stain Pro 3 will save linen and money for commercial laundry operations.



# Pre-Spotters



## STAIN PRO B

27185  
6/1 QT

**Blood Stain Pre-Spotter.** Blood stains are easily removed from linens and other fabric by pre-spotting before laundering with high performance Stain Pro B. Professionally formulated to maximize results.



## STAIN PRO C

12690  
6/1 QT

**Pre-Spotter with Bleach.** Excellent chlorine infused pre-spotting agent for use on white linen. Removes a broad range of stains including coffee, wine, fruit juice, mildew and mustard. Linen must be chlorine bleach compatible. Floral fragrance.



## STAIN PRO E

14050 · 6/1 QT

**Fabric & Carpet Stain Remover with Enzymes.** Powerful enzyme formula for use in the pre-spotting process and as a carpet spotter. Removes challenging grass, ink, chocolate, ketchup, gravy and other food color stains. Kiwi peach fragrance.



## STAIN PRO O

22679  
6/1 QT

**Oily Stain Pre-Spotter.** Specifically formulated to tackle the toughest oily stains. With a special blend of solvents, surfactants and boosters, Stain Pro O is designed to remove medicine, oil, lipstick, shoe polish and similar oily stains. Citrus fragrance.



## STAIN PRO R

27190  
6/1 QT

**Rust Stain Pre-spotter.** Gets rust out! Superb, concentrated iron removing formula, designed to pre-spot rust stains on linens.



## STARTER KIT

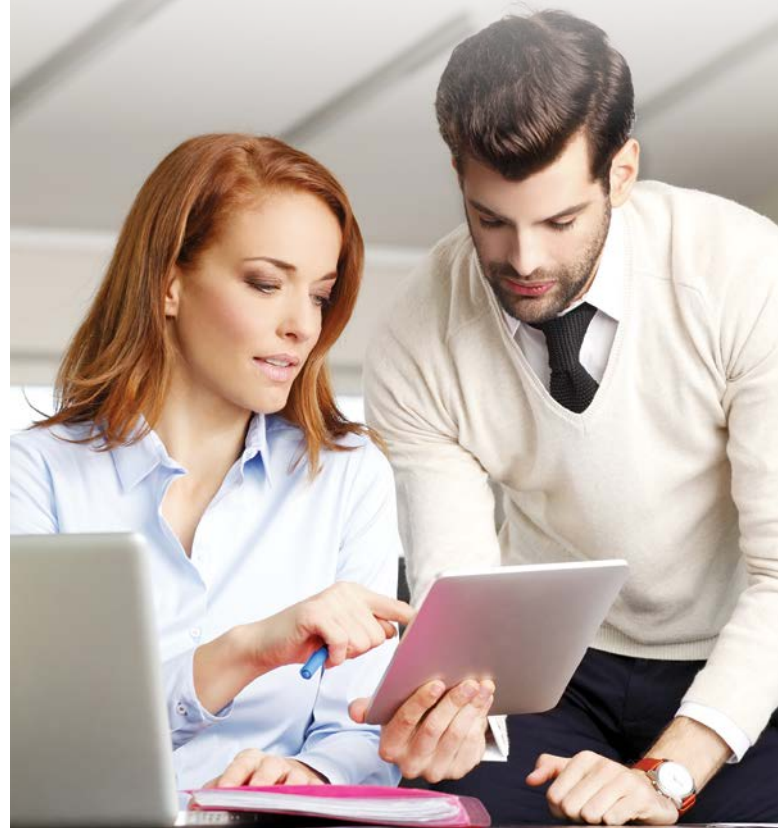
PB00PSSTRKT  
6/1 QT

### Stain Pro Pre-Spotter Starter Kit

This Starter Kit is a great way to introduce customers to our pre-spotter products. Each starter kit contains: 2 quarts of Stain Pro C and 1 quart each of Stain Pro B, E, O, and R. Also included are 5 sprayers and a mini pre-spotters stain removal chart.

# PROBLEND™

*Electronic service reporting  
that meets your every day  
operational needs.*





PROBLEND™



## equipment & tools

Reliable. Flexible. Ownable.

ProBlend's line of durable, reliable cleaning machinery is designed to meet the needs of your business today and tomorrow. Financing programs include purchase, lease or rent to own, with flexible, competitive terms. Your local ProBlend representative can help you determine the equipment and program that's right for you.

# SCBA Decon Washer



Everything is clean and free from contamination in just a few minutes.

**Contaminated Gear a Constant Health Risk.** SCBA (Self Contained Breathing Apparatus) and protective gear is a life insurance for firemen and women. On an emergency call, soot particles and combustion gases are absorbed by the protective gear, contaminating it. Therefore, it's important to decontaminate it immediately upon return to the station.

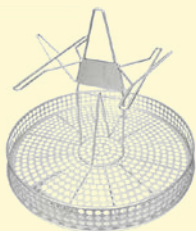
Cleaning by Hand	VS	SCBA Decon Washer
30 minutes per set		8 minute cycle for SCBAs
Unprotected exposure to toxic residues on SCBA		Ergonomic process minimizes contact with contaminated materials
Prolonged exposure to toxins put firemen & women at a greater risk of cancer		Minimizes exposure with sealed, self-contained cleaning process

**Solo Rescue®** cleans SCBA smoke diver gear (steel, composite, rubber, fabric, plastic etc.) from residues of combustion gases, soot particles and toxins in just a few minutes and contributes to a significantly improved working environment for rescue service personnel.

**Developed In Close Contact With The Swedish Rescue Service** to meet the needs for cleaning contaminated equipment in the best way possible. Solo Rescue has a specially adapted interior and accessories to ease the cleaning of SCBA, gloves, boots and helmets.

**Compact, Easy And Efficient.** Fits in less than 11 ft<sup>2</sup> with a lower door that folds out, acting as a loading table when opened. Two efficient wash programs: Choose between a 2 minute cycle for gloves and helmets or a 5 minute cycle for SCBAs.

## Accessories



**INCLUDED**  
**Standard basket + Single/ Double Cylinder Holder.** The basket and SCBA holder for single and double cylinders, including masks can clean up to 15 SCBAs per hour.



**OPTIONAL**  
**Holder for Jumbo Cylinders.** Washes 2 cylinders at a time.



**Holder for Gloves, Helmets and Boots.** Basket fits 2 holders at a time for full capacity. At full capacity it can clean 160 gloves per hour, 60 pairs of boots per hour, or 100 helmets per hour.





# Dishmachines - Chemical Sanitizing Door Type



## WAREFORCE® I-E

**Internal Sump.** Single rack, convertible for straight-through or corner application, 90-second cycle, 39 racks per hour, 1.02 gallons per rack, self-draining stainless steel wash pump assembly, air gap, electromechanical timer, top mounted controls, delimer switch, low product indicator light, built-in chemical pumps and priming switches, auto start/stop, built-in stainless steel scrap accumulator.



## WAREFORCE® I-E-FL (Front Loading Machine)

## WAREFORCE® I-E-LTH (with booster heater)

## WAREFORCE® I HH

**Internal Sump.** 27" tall chamber, single rack, convertible for straight-through or corner application, 90-second cycle, 39 racks per hour, 1.61 gallons per rack, self-draining stainless steel wash pump assembly, air gap, electromechanical timer, top mounted controls, delimer switch, low product indicator light, built-in chemical pumps and priming switches, auto start/stop, built-in stainless steel scrap accumulator, internal sump.



## WAREFORCE® II

Dual rack straight, 74 racks per hour, 1.17 gallons per rack, self-draining stainless steel wash pump assembly, air gap, electromechanical timer, three selectable wash cycles, top mounted controls, delimer switch, low product indicator light, built-in chemical pumps and priming switches, auto start/stop, built-in stainless steel scrap accumulator.



## WAREFORCE® IIC

**Same specifications as the WAREFORCE® II,** except for corner installations. Please specify right front (R) or left front (L) door opening.



# Dishmachines - High Temperature Sanitizing Door Type



## WAREFORCE® HT-180

Single rack, field convertible for straight-through, corner application, electric tank heat, built-in booster heater with Sani-Sure™ final rinse system, 58 racks per hour, 0.89 gallons per rack, self-draining stainless steel wash pump assembly, universal timer, four selectable wash cycles, top mounted controls, delimer switch, auto start/stop, exhaust vent fan control, front stainless steel dress panel.



**Also available without booster heater.**

## WAREFORCE® HT-180 with Ventless & Energy Recovery

No vent hood required. Accommodates a wide range of water inlet temperatures and operates with only a cold water connection. Cleans 39 racks per hour. Door interlock and pressure regulator included.



## WAREFORCE® HT-180 HH-E

27" tall chamber, single rack, field convertible for straight-through or corner application, electric tank heat, built-in booster heater with Sani-Sure™ final rinse system, 58 racks per hour, 1.36 gallons per rack, self-draining stainless steel wash pump assembly, dual counter-rotating lower wash arms, universal timer, four selectable wash cycles, top mounted controls, delimer switch, auto start/stop, exhaust vent fan control, front stainless steel dress panel.



## WAREFORCE® HT-180HH-E with Ventless & Energy Recovery

See WAREFORCE® HT-180 VENTLESS specs above.  
Cleans 37 racks per hour.



## WAREFORCE® NXP-180

Single 57 second cycle, field convertible, electric tank heat, built-in booster heater with Sani-Sure™ final rinse system, 58 racks per hour, 0.89 gallons per rack, top mounted controls, delimer switch, exhaust vent fan control.



## Dishmachines - Glasswashers



### WAREFORCE® DG-E

**Chemical sanitizing.** Fill and dump with sustaining heater, 90-second cycle, 40 racks per hour, 1.16 gallons per rack, accommodates glasses and wares up to 11" high, functions as both a glasswasher and a dishwasher, easy access controls, electromechanical timer and two half-racks included. Rated by NSF as both a glasswasher and a dishwasher,



### WAREFORCE® DG-HT-E-SEER-S

**High temperature sanitizing.** Recirculating, 20 racks per hour, 0.65 gallons per rack, Soft Start, built-in booster heater with Sani-Sure™ final rinse system, double wall construction, pumped drain, universal timer, digital LED control panel, three selectable cycles, one peg and one combination rack included.



### WAREFORCE® CG

**Chemical sanitizing.** Rotary-type, cleans 1,200 glasses per hour, uses 10 gallons of water per hour, single switch operation, built-in chemical pumps and priming switches, hot or cold fresh water final rinse, convenient chemical storage and easy access scrap screens. Clockwise rotation.

### WAREFORCE® CG-115

**115 Volt version of WAREFORCE® CG.**





## Dishmachines - Conveyors



### WAREFORCE® 44 CONVEYOR

44" single tank dual-rated conveyor dishmachine with electric tank heat, 225 racks/hour and 0.68 gallons/rack for high temp, 209 racks/hour and 0.78 gallons/rack for chemical sanitizing, Adjust-A-Peak™ conveyor speed, EnergyGuard™ system, 25" standard height clearance, table limit switch, automatic fill, manual/automatic switch, whisper-quiet stainless steel pump assembly, exhaust vent fan control.



### WAREFORCE® 66 CONVEYOR

Same specifications as WAREFORCE® 44, plus 22" pre-wash section.

## Dishmachines - Undercounters



### WAREFORCE® UL30

**Chemical sanitizing.** Fill and dump with sustaining heater, 24 racks per hour, 1.2 gallons per rack, double-wall construction, stainless steel wash pump assembly, pumped drain, electromechanical timer, delimer switch, low product indicator light, built-in chemical pumps and priming switches, auto fill, auto stop, one peg and one combination rack included.



### WAREFORCE® UH30-FND

**High temperature sanitizing.** Fill and dump, 24 racks per hour, 1.1 gallons per rack, built-in booster heater with Sani-Sure™ final rinse system, double-wall construction, stainless steel wash pump assembly, pumped drain, universal timer, delimer cycle, built-in chemical pumps and priming switches, auto fill, auto stop, one peg and one combination rack included.





**PACIFIC**<sup>®</sup>  
F L O O R C A R E

A Hines Corporation Company



**VACUUMS & SWEEPERS**

**SPRAYERS**

**UV-C LIGHT FORCE**

**SCRUBBERS**

**FLOOR MACHINES**

Pacific Floorcare<sup>®</sup> is dedicated to providing quality, innovative floor care equipment to our valued customers and end users. Our Purpose Built philosophy keeps us committed to giving building service contractors, facility managers and cleaning professionals the best, most efficient products in the industry.



**See the entire product line at [pacificfloorcare.com](http://pacificfloorcare.com)**

Purpose Built Since 1946



PROBLEND™

**BEYOND CLEAN.**

ProBlendSolutions.com

— member of the PROBLEND™ NETWORK —