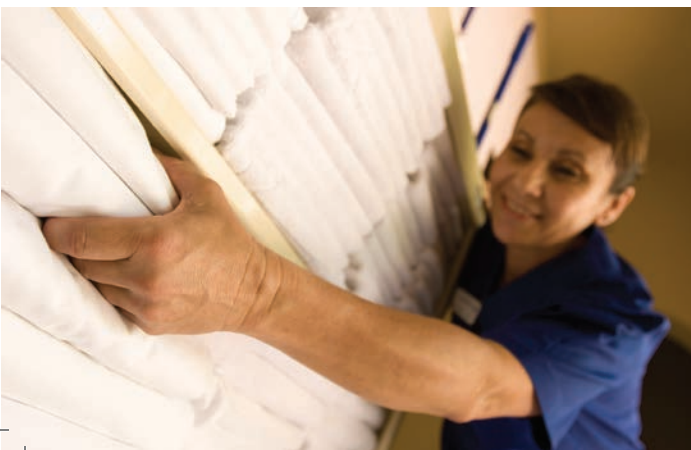


# PROBLEND™

- warewash
- workforce™
- emergency services
- hand care
- housekeeping
- laundry

## Professional Cleaning Solutions

ProBlendSolutions.com



# PROBLEND™

## Table of Contents

<b>●</b>	<b>warewash</b>	<b>3</b>
	High Temperature Systems .....	4
	All Temperature Systems.....	6
	Presoaks .....	6
	Pot and Pan .....	7
	Sanitizers and Disinfectants.....	7
	Cooking Surfaces .....	9
	Cleaners and Degreasers .....	9
	Specialty Cleaners.....	10
	Floor Cleaners.....	11
	ASPIRE Ultra Warewash System .....	12
<b>●</b>	<b>workforce</b>	<b>13</b>
<b>●</b>	<b>emergency services</b>	<b>15</b> <small>NEW</small>
<b>●</b>	<b>hand care</b>	<b>17</b>
	Foaming Soaps and Sanitizers .....	18
	Lotion Soaps .....	18
	Dial® Hand Care System.....	19
<b>●</b>	<b>housekeeping</b>	<b>21</b>
	Bathroom Cleaners .....	22
	All Purpose Cleaners .....	22
	Polishes .....	23
	Glass Cleaners.....	23
	Carpet Cleaners .....	23
	Dial® EcoSmart Amenity System.....	24
	Restroom Care.....	25
	Rachael Tolliver RTU.....	25
	HYscent Stealth System.....	26
	GALAXY Dispensing System.....	27
<b>●</b>	<b>laundry</b>	<b>31</b>
	Alkali, Solvent and Conditioner.....	32
	Detergents.....	32
	Destainers.....	34
	Sour.....	34
	Softeners .....	35
	Sour/Softener.....	35
	Sizing.....	35
	Pre-Spotters .....	36
	Reclaim.....	36
	ORION Laundry System .....	37
<b>●</b>	<b>floor care</b>	<b>39</b>
<b>●</b>	<b>equipment &amp; tools</b>	<b>41</b>
	SCBA Decon Washer .....	42
	Dishmachines .....	43
	Housekeeping Tools.....	47



## BEYOND CLEAN.

ProBlend is a brand of cleaning solutions that goes BEYOND CLEAN... for organizations that buy it, sanitation professionals and service technicians that use it, and customers and guests that enjoy the many benefits of cleaner, healthier environments.

Serving hospitality, education, food service, Building Service Contractors (BSCs), emergency services and municipalities, ProBlend uniquely offers a total commercial cleaning solutions program for these industries. From high performance cleaning and sanitation to reliable, cost-effective systems and equipment, your authorized ProBlend dealer or service provider can recommend the perfect blend of professional ProBlend products to meet the evolving needs of your business today.

### legend



Environmentally Friendly Products

REV:021820



PROBLEND™



# warewash

Convenience. Confidence. Health.

ProBlend's line of complete warewash cleaning solutions removes the worry and hassle from kitchen and facility cleaning and sanitation, offering employees a healthier and safer work environment and guests a remarkably enjoyable dining experience.



Endorsed by **CHEF WILO BENET**

With thirty eight years of experience in the Culinary Industry, Chef Wilo Benet gained experience at the Hotel Caribe Hilton in San Juan, Puerto Rico and The Maurice Restaurant, The Water Club, and Le Bernardin Restaurant in New York. He opened Pikayo in 1990 and with its success, has appeared in several TV Shows including "Top Chef" amongst many others. Wilo has written two bestselling books and after hurricane Maria, Wilo became a part of the Chefs for Puerto Rico team which fed more than 1.5 million people. These skills have given him the opportunity to work in forums around the world.

*"You'll find ProBlend™ Warewash & Workforce™ products in all my kitchens!"*

## High Temperature Systems - Detergents



### CRYSTAL

**20740**  
4/1 GAL • 5 GAL

**Chlorinated High Temp Detergent.**

Liquid detergent with high alkalinity and extra destaining properties. It contains polymeric dispersants to work scale free in water with high solids.



### SOLID FORCE

**21195**  
4/8 LB

**Solid Dishwashing Detergent.** Premium high temperature solid dishmachine detergent provides excellent cleaning ability, free rinsing and use cost. For use in solid dispensing equipment.



### ENCAP DISH

**13920**  
4/10 LB

**Encapsulated Dishwashing Detergent.**

Powdered detergent contains chlorine, chelators and dispersing chemicals, which bonded together offer excellent results and use cost. Encapsulated to provide a closed loop detergent system.



### SOLID FORCE NP

**21198**  
4/8 LB

**Solid Non-Phosphate Detergent.**

Premium high temperature dishmachine detergent provides excellent cleaning ability, free rinsing and use cost. For use in solid dispensing equipment.



### SAFE METAL

**10966**  
4/1 GAL • 5 GAL

**Metal Safe High Temp Detergent.**

Low foam liquid detergent for high temperature dishmachines quickly removes stubborn soils. Its extra chelating ability makes it a powerful cleaner for hard water conditions. Chlorine Free.



### SOLID METAL POWER

**21277**  
4/8 LB

**Solid Metal Safe Dishwashing Detergent.**

High temperature detergent that is gentle and safe for soft metals including aluminum and pewter. Excellent cleaning, free rinsing and use cost. For use in solid dispensing equipment.



## High Temperature Systems - Rinse Additives



### RINSE FREE

**14409**  
4/1 GAL • 5 GAL

#### Economic Dishwashing Rinse.

Economical concentrated liquid rinsing agent contains defoaming and sheeting agents. It accelerates drying time by reducing the surface tension on tableware and aids in defoaming wash tanks.



### SPARKLE

**21945**  
4/1 GAL • 5 GAL

**Premium Dishwashing Rinse.** Premium concentrated liquid drying agent for high temperature dishmachines, using medium to soft water. It contains defoamers, chelating agents and is highly active. Leaves glasses and flatware spotless.



### SOLID SHEEN

**21580**  
2/5 LB

#### Solid Hard Water Rinse Additive.

Effective yet economical solid drying agent contains sequestering agents and anti-foamers for hard water applications. It breaks down the surface tension of water so water droplets cannot form.

# PROBLEND™

*Electronic service reporting  
across the globe.*

#### Get the ProBlend experience

##### WAREWASH

- Safe Food Handling Report
- Warewash Service Report

##### HOUSEKEEPING

- Guest Room Inspection Report

##### LAUNDRY

- Laundry Service Report

##### GENERAL

- Inventory Order Report
- ProBlend Order Form
- Bill of Lading



## All Temperature Systems



### LT DETERGENT

**18138**  
4/1 GAL • 2.5 GAL • 5 GAL

**All Temperature Detergent.** Economically formulated, alkaline dishmachine detergent. LT Detergent is an all temperature detergent that provides the best results when used in medium to soft water.



### HW LT DETERGENT

**18145**  
4/1 GAL • 2.5 GAL • 5 GAL

**Hard Water All Temperature Detergent.** Specifically designed for hard water applications in all temperature commercial dishmachines. HW LT Detergent keeps your dishes clean and sparkling for great customer satisfaction.



### LT RINSE AID

**20733**  
4/1 GAL • 2.5 GAL • 5 GAL

**All Temperature Rinse.** Economical anti-spotting drying agent and anti-foamer breaks down the surface tension of water on glasses and silverware. The result is sheeting of rinse water and no water spots.



### HW LT RINSE

**14409**  
4/1 GAL • 5 GAL

**Hard Water All Temperature Rinse.** Specifically designed for hard water applications in all temperature commercial dishmachines. HW LT Rinse creates sparkling spot-free results under challenging conditions.



### LT SAN

**05205**  
4/1 GAL • 2.5 GAL • 5 GAL

**All Temperature Sanitizer.** Concentrated and stabilized 10% sodium hypochlorite solution, blended to sanitize food service glassware, flatware, dishes, and utensils in commercial dishmachines. EPA Registered.

## Presoaks



### OXY COMPLETE

**14727**  
2/5 LB

**Powder Presoak & Oxygen Destainer.** Powdered oxygenated destainer formula effectively removes stains from plasticware, coffee cups, serving utensils, tea urns and cutting boards.



### SILVER BRILLIANT

**18340**  
4/1 GAL • 5 GAL

**Liquid Flatware Soak.** Enhanced performance silver and flatware brightening agent can be used to soak flatware prior to being washed. It keeps tarnish from forming and improves sheeting.



### SILVER BURST

**26052**  
2/5 LB

**Powder Flatware Soak.** Silver and flatware brightening agent can be used to soak flatware prior to being washed. Keeps tarnish from forming on flatware and improves sheeting.



### SOLID SILVER BRITE

**21540**  
2/8 LB

**Solid Flatware Soak.** Mild alkaline formulation for presoaking and detarnishing silverware. It attacks residual soil on silver and flatware, digesting it and insuring its removal. Works well in all water conditions.



## Pot and Pan



### BAR GLASS

**11428**  
4/1 GAL

**Manual Bar Glass Detergent.** Low foaming manual glassware detergent specifically formulated to rinse freely and prevent water spotting. Loosens dried on soils, including lipstick. Effective in all water conditions. Floral fragrance.



### SOLID CLEAN

**21280**  
2/5 LB

**Solid Pot and Pan Detergent.** Formulation is 100% active. Solid Clean is an excellent foamer, quickly cuts grease and tough soils and is mild to skin. Floral fragrance



### CLEAN PRO POT & PAN

**19865**  
4/1 GAL • 5 GAL

**All Purpose Pot and Pan Detergent.** This economical detergent produces thick, rich suds that penetrate and emulsify food soils and grease. Can be used in all water conditions. Baby powder fragrance.



### EMERALD

**17840**  
4/1 GAL • 5 GAL

**Phosphate Free Pot and Pan Detergent.** High quality phosphate free detergent formulation. Emerald is tough on soils yet gentle to skin, produces long lasting suds and works well in all water conditions. Citrus fragrance.



### LF ZIRCON

**17835**  
5 GAL

**Low Foaming Pot and Pan Detergent.** Phosphate free detergent for automated soaking systems. It is tough on soils and effective in all water conditions. Citrus fragrance.



### DD 5000

**13546**  
2/1 GAL • 4/1 GAL • 2.5 GAL • 5 GAL

**Third Compartment Sink Sanitizer.** Effectively cleans, sanitizes, and disinfects surfaces in hospitals, nursing homes, schools, food handling and processing areas, and institutional kitchens. EPA Registered.



### SAPPHIRE

**21000**  
6/1 QT • 2/1 GAL • 4/1 GAL • 2.5 GAL • 5 GAL

**Premium Pot and Pan Detergent.** Phosphate free pot and pan detergent produces long lasting suds. Sapphire is tough on soils yet gentle to skin. Works well in all water conditions. Pure clean fragrance.



### DSQ 10

**13960**  
2/1 GAL • 4/1 GAL • 5 GAL

**Third Compartment Sink Sanitizer.** Disinfectant, fungicide, mildewstat and virucide designed for hospitals, nursing homes, hotels & motels, institutional, industrial, and institutional kitchen use. EPA Registered.

## Sanitizers and Disinfectants

# Solid Products

Highly Active & Sustainable



## SOLID FORCE

PB0021195AA • 4/8 LB

**Solid Dishwashing Detergent.** Premium high temperature solid dishmachine detergent provides excellent cleaning ability, free rinsing and use cost. For use in solid dispensing equipment.



## SOLID SHEEN

PB0021580AA • 2/5 LB

**Solid Hard Water Rinse Additive.** Effective yet economical solid drying agent contains sequestering agents and anti-foamers for hard water applications. It breaks down the surface tension of water so water droplets cannot form.



## SOLID FORCE NP

PB0021198AA • 4/8 LB

**Solid Non-Phosphate Detergent.** Premium high temperature dishmachine detergent provides excellent cleaning ability, free rinsing and use cost. For use in solid dispensing equipment.



## SOLID SILVER BRITE

PB0021540AA • 2/8 LB

**Solid Flatware Soak.** Mild alkaline formulation for presoaking and detarnishing silverware. It attacks residual soil on silver and flatware, digesting it and insuring its removal. Works well in all water conditions.



## SOLID METAL POWER

PB0021277AA • 4/8 LB

**Solid Metal Safe Dishwashing Detergent.** High temperature detergent that is gentle and safe for soft metals including aluminum and pewter. Excellent cleaning, free rinsing and use cost. For use in solid dispensing equipment.



## SOLID CLEAN

PB0021280AA • 2/5 LB

**Solid Pot and Pan Detergent.** Formulation is 100% active. Solid Clean is an excellent foamer, quickly cuts grease and tough soils and is mild to skin. Floral fragrance.

NEW



## SOLID DISPENSERS

**EvoWash** - For Solid Dishmachine Detergents

**EvoRinse** - For Solid Dishmachine Rinses



# PROBLEND™

ProBlendSolutions.com

## Cooking Surfaces



### ELIMINATOR PLUS

**27180**  
6/1 QT • 4/1 GAL

**Oven Cleaner.** Premium oven cleaner formulated with a blend of high alkaline, solvent based, organic detergents for dissolving heavy soils. It cleans fat, oil and grease from ovens, grills, stoves and hard surfaces.



### ELIMINATOR ULTRA

**27269**  
6/1 QT • 4/1 GAL

**Non-Caustic Foaming Oven & Grill Cleaner.** Dissolves heavy soils instantly removing carbonized buildup, fat, oil and grease found on surfaces where high heat present. Super concentrated ready to use oven cleaner. *Use with Guardian keep ovens like new.*



### GUARDIAN

**27271**  
6/1 QT

**Oven Protectant.** Keeps carbonized buildup, fat, oil and grease from sticking to interior oven walls. Guardian creates a protective barrier improving the life of the oven and makes cleaning easy. Not for use on food contact surfaces. *Works synergistically with Eliminator Ultra to make cleaning a snap.*



### GREASE EASE

**14710**  
10/1.5 LB

**Deep Fat Fryer Cleaner.** Concentrated powder alkaline detergent formulation quickly emulsifies fat and grease in deep fryers. It aggressively removes grease and heavy oil based soils from kettle interior and exterior surfaces.



### HT GRILL CLEANER

**15210**  
48/3.3 OZ • 6/1 QT

**Flat Top Grill Cleaner.** Removes grease, fat and carbon buildup from hot surfaces, such as grills and griddles. Works quickly and easily saving time and labor. Comes in both quart and easy to use one-time use packets.

## Cleaners and Degreasers



### CITRA SOL

**RD102**  
2/1 GAL • 4/1 GAL

**All Purpose Cleaner and Degreaser.** Removes fat and petroleum based soils. Bold citrus fragrance.



### CITRA SOL RTU

**27270**  
6/1 QT

**Ready To Use All Purpose Cleaner and Degreaser.** Removes fat and petroleum based soils. Bold citrus fragrance.



### HD PRIDE CLEANER

**15770**  
4/1 GAL

**Heavy-Duty Degreaser.** Alkaline and butyl solvent based degreaser penetrates and removes the toughest soils quickly and easily. HD Pride Cleaner contains alkalis, sequestrants and wetting agents for powerful heavy-duty degreasing.



### LAVENDER EXPRESS

**16600**  
4/1 GAL • 5 GAL

**Multi-Purpose Cleaner.** Boldly fragranced Lavender Express is a special multi-purpose cleaner and degreaser formulated for removing soil, grease and grime from any washable surface.



# Specialty Cleaners



## CLEAN FREEZE

**23330**  
4/1 GAL

**Freezer Cleaner.** Low foam alkaline cleaner formulated for use in refrigerated and freezer environments on a broad range of surfaces and most metals. Provides rapid penetration of dirt, grease and protein soils.



## PRODUCESHIELD+

**05089**  
2.5 GAL

**Ultra Concentrated Fruit & Vegetable Wash.** No-Rinse produce wash solution enhances food safety, reducing spoilage and improving textural characteristics for processed fruits and vegetables. A proprietary blend of all GRAS ingredients.



## ENHANCE

**PB00QUE01AA** • 12/14.5 OZ

**Food Grade Stainless Steel Cleaner.** Aerosol spray. Oil based cleaner brightens, polishes and protects stainless steel by forming a shield that resists watermarks and rust. Also great for aluminum, chrome, Formica®, porcelain and ceramic tile. Lemon fragrance.



## SCALAWAY

**21020**  
4/1 GAL

**Hard Water Remover.** Concentrated non-foaming liquid lime scale remover. For use in dishmachines and to descale steam tables, stainless steel and nonporous kitchen surfaces not damaged by acidic solutions. Removes rust.



## GREASE FREE

**10661**  
4/1 GAL • 5 GAL

**Drain and Grease Trap Treatment.** Designed to accelerate the bioremediation process, Grease Free controls the grease and odors found in drain lines and grease traps with its bacteria that digests grease and gives off CO2 and water as byproducts. Great for use around urinals too to get rid of bodily fluid odors. Neutroleum fragrance.

# produce<sup>+</sup>shield<sup>+</sup>

## Reduces E.Coli, Listeria, & Salmonella on Processed Fruits and Vegetables\*

**+5 Pathogen Reduction**

\* See Pesticide Registration Manual: Chapter 12-Other Federal or State Agency Requirements, Antimicrobial Uses Regulated Solely by the FDA.  
<https://www.epa.gov/pesticide-registration/pesticide-registration-manual-chapter-18-other-federal-or-state-agency#fda>; See also 40 C.F.R. § 152.5(d)

The ProduceShield+ trademark is property of CMS Technology, Danbury, CT USA.

Wash	Leading Competitor	Produce Shield+
E.Coli	3.60	>5.67
Listeria	3.08	>5.82
MRSA	3.93	>5.73
Salmonella	3.02	>5.78
Staph	3.16	>5.84

Source: Eurofins (AOAC Method 960.09)



# Floor Cleaners



## BIO FORCE

11680  
4/1 GAL

**Heavy-Duty Floor Cleaner.** For commercial kitchens where concrete, grout and quarry tile floors make for tough work. Bio Force helps improve traction and as an added bonus, helps control odors. Neutroleum fragrance.



## EVO FLOOR CLEANER

BIO23  
4/1 GAL • 5 GAL

**Microbial Floor Cleaner & Drain Maintainer.** Delivers superior floor cleaning, odor control, drain and trap maintenance, environmental benefits and flexibility. Effectively removes the food sources of fruit flies and controls odors in dumpsters. Fresh fragrance.



## DAILY CLEANER & DEGREASER

21150  
2/1 GAL • 4/1 GAL • 2.5 GAL • 5 GAL

**Hard Surface Floor Cleaner.** Use as the first line of defense in the battle against slippery floors. This hard surface floor cleaner greatly improves surface traction, reduces the occurrence of polymerization, when used daily, and leaves surfaces residue free.



## FLOOR TOUCH

18570  
4/1 GAL • 5 GAL

**All Purpose Neutral Floor Cleaner.** Cleans oil, grease, grime, dirt, inks, and most other soils. Will not remove or harm floor finishes. Citrus fragrance.



## 2X CONCENTRATE DAILY CLEANER & DEGREASER

PB00CON18AA • 32/5 OZ

**Hard Surface Floor Cleaner.** Greatly improves surface traction, reduces the occurrence of polymerization, when used daily, and leaves surfaces residue free. Use on all flooring including slate, quarry, terrazzo, ceramic, concrete, recycled pvc, etc.



## GALAXY-41 ENVIRO MOP

BIO23  
2/1 GAL

**Microbial Floor Cleaner.** Everyday use floor cleaner and drain maintainer. Delivers superior floor cleaning, odor control, drain and trap maintenance, environmental benefits and flexibility. Effectively removes the food sources of fruit flies. Fresh fragrance.

Avoid **Slip & Fall** Accidents with



Over **2X more** concentrated than regular warewash systems



Safe Link Closed Loop Chemical Management System for easy use of chemicals and change-out



# PROBLEND™

## ASPIRE



### ASPIRE - ANDRON

27261  
2/1 GAL

**Ultra Concentrated Dishmachine Detergent.** Designed for all temperature dishmachines. This product is highly active and for heavy-duty use in medium to hard water conditions.



### ASPIRE - SPONDREL

27262  
2/1 GAL

**Ultra Concentrated Drying Agent.** Designed for all temperature dishmachines. It defoams and breaks down the surface tension of water at high dilutions.



### ASPIRE - QUANTUM

19355  
2/1 GAL

**Ultra Concentrated Pot and Pan Detergent.** Produces thick, rich suds that last and last. Works well in all water conditions. Pure clean fragrance.

#### Features & Benefits:

- Minimizes operational and shipping costs
- Concentrates allow for more storage capacity
- Consistent measuring for excellent cleaning results and use cost
- Super concentrated formulations for efficiency and sustainability
- Excellent results in hard water conditions





PROBLEND™



workforce™

Specialty. Service. Solutions.

ProBlend's Workforce™ chemicals are designed for service technicians who need specialty cleaning and degreasing solutions for the equipment they repair and service. Whether used in the field or sold at your parts counter, the Workforce™ foodservice and hospitality line is a force to be reckoned with.



IT'S TIME TO  
Reimagine Your Chemical Program

The Workforce™ brand is under license and partnership with Magnus®.



## COMBI-CARE

**PBOOMAG02AB** · 2/2.5 GAL

Combi-Oven Rinse Aid. This advanced formula helps reduce lime scale build-up and ensures maximum rinse action for quick drying. Designed for use in combi-ovens with an automatic cleaning system. Ready to use formula.



## COMBI-CLEAN

**PBOOMAG02AA** · 2/2.5 GAL

Combi-Oven Detergent. Revolutionary formula that quickly emulsifies grease and food particles to leave your oven sparkling clean in one cycle. Designed for use in combi-ovens with an automatic cleaning system. Can also be used as a spot cleaner to pre-treat heavy-duty soils with a manual sprayer. Ready to use formula.



## COMBI-TABS

**COMING SOON**

The Combi-Care and Combi-Clean you love now in tablet form!



## DYNAMIX STEAMER/ BOILER CLEANER

**PBOOMAG02AG** · 12/16 OZ  
**PBOOMAG02AH** · 4/1 GAL

Aggressive descaler that fights and removes scale and lime build-up from all steamers and boilers. Safe to use on steel, iron, brass and copper.



## E/S NI-SAFE ICE MACHINE CLEANER

**PBOOMAG02AE** · 12/16 OZ  
**PBOOMAG02AF** · 4/1 GAL

Extra strength descaler for use in commercial ice machines, soft drink dispensers, coffee urns and humidifiers. Safe on stainless and nickel-plated steel.



## NI-SAFE ICE MACHINE CLEANER

**PBOOMAG02AC** · 12/16 OZ  
**PBOOMAG02AD** · 4/1 GAL

Non-foaming, non-fuming cleaner that quickly removes scale from stainless steel and nickel-plated steel in commercial Ice machines.



## NINJA FILTER SOAK

**27272**  
**4/1 GAL · 5 GAL · 55 GAL**

Filter Soak & Exhaust Hood Cleaner. Revolutionary, super concentrated, safe to use, non-caustic degreaser for soaking exhaust hood filters and safely cleaning stubborn grease from commercial kitchen exhaust hood systems, fans, and more. Trust NINJA to get the job done **FAST, SAFE and AFFORDABLY.**





PROBLEND™

# 911 emergency services

Safe. Clean. Equipment.

Emergency services personnel go into dangerous situations everyday, exposing themselves to toxins. At the front line of defense for these heroes is their safety equipment. Cleaning the equipment after exposure and making it safe for its next use is the purpose our Emergency Services line of products.

# PROBLEND™



## SCBA

Protective Gear Decontamination Detergent  
*Detergente Protector de Descontaminación de Engranajes*

### QUICK, EASY, SAFE.

Easy Decontamination of Complete SCBA

Item Code Case  
PB0010967AA 2.5 GAL

- Use with SCBA DECON WASHER machine  
[Full description of machine on page 42](#)
- Removes soot and dangerous carcinogens from SCBA (Self Contained Breathing Apparatus)
- Intended for use by firefighters and first responders
- Mild and low-foaming detergent



emergency services

911

Endorsed By: Solo Rescue®  
832.321.3260 | [www.solorescue.com](http://www.solorescue.com)

[ProBlendSolutions.com](http://ProBlendSolutions.com)



PROBLEND™



# hand care

Clean. Safe. Healthy.

It's simple. It's universal - Clean, germ-free hands mean healthier living, working and learning environments. The ProBlend Hand Care line offers a variety of effective soaps and hand sanitizers that are easy and convenient to install and refill, and that are excellent choices for schools, healthcare, food service, hospitality and janitorial applications.

## Foaming Soaps and Sanitizers



### ANTIBACTERIAL FOAM

**PB00CUS04AB** · 2/1 GAL

**Moisturizing Antibacterial Foaming Hand Soap.** Provides a cleaner, better guest experience while promoting a safe, healthy environment. It is economically formulated for facilities with high guest volume. Floral scent. FDA Registered.



### CLEAR FOAMING SILK

**27235**  
4/1 GAL

**Dye Free Foaming Hand Soap.** Creates rich, creamy lather right from the dispenser. It pampers hands, leaving them soft and smooth, while effectively removing tough soils. Almond fragrance.



### E3 FOAMING HAND SANITIZER

**PB00CUS04AC** · 2/1 GAL

**All-In-One Foaming Hand Sanitizer and Cleanser.** Safely formulated to kill dangerous microorganisms and E.coli bacteria. Pre-lathered for quick, convenient dispensing, which leaves little room for mess. Dye and fragrance free. FDA Registered.

## Lotion Soaps



### CLEAN & SIMPLE

**15485**  
4/1 GAL

**Economical Liquid Hand Soap.** Formulated for excellent quality and use cost. Rich lather, mild pleasant fragrance and value guarantee absolute satisfaction for guests and facility management alike. Lemon fragrance. *Doubles as a pot and pan detergent.*



### CLEAR SILK

**27230**  
4/1 GAL

**Dye Free Liquid Hand Soap.** Luxurious ingredients create rich, creamy lather that moisturizes as well as it cleans. It pampers hands, leaving them soft and smooth, while effectively removing tough soils. Almond fragrance.



### WHITE SILK

**RD120**  
4/1 GAL

**White Hand Soap.** Luxurious ingredients create rich, creamy lather that moisturizes as well as it cleans. It pampers hands, leaving them soft and smooth, while effectively removing tough soils. White with almond fragrance.



# Dial® Hand Care System

Healthier Skin. Healthier You.®



## BASICS FOAMING HYPOALLERGENIC

**PB00HEN02AS** · 3/1.7 L (Manual)  
**PB00HEN02AU** · 3/1 L (Touch-Free)

**Hypoallergenic Foaming Hand Wash.** Dial® Basics with Aloe is dermatologist tested, hypoallergenic, rinses clean and excellent for frequent handwashing. Floral fragrance. Green Seal Certified.



## COMPLETE® FOAMING SPRING WATER

**PB00HEN02AV** · 3/1.7 L (Manual)  
**PB00HEN02AY** · 3/1 L (Touch-Free)

**Antimicrobial Foaming Hand Wash.** Dial Complete® Spring Water® Antimicrobial kills 99.99% of germs. This gentle hand wash foams clean, rinses clean and smells clean – as clean as a mountain spring. NSF E2 Certified.



## ANTIBACTERIAL HAND SANITIZER FOAM

**PB00HEN02AT** · 3/1.2 L (Manual)  
**COMING SOON** · 3/1 L (Touch-Free)

**Antibacterial Foaming Hand Sanitizer.** Dial® alcohol-based hand sanitizer with a moisture-lock system that is proven to deliver 10X more moisturization than if left untreated. Meets OSHA, CDC, and FDA standards and guidelines. Fragrance Free. NSF E3 Certified.



## 1700 MANUAL DISPENSER

**PB00HEN02AG** · 3/CASE (Pearl)  
**PB00HEN02AH** · 3/CASE (Smoke)

**Manual Dispenser.** Made of heavy-duty plastic and translucent backplate for easy viewing of soap level. Easy to load cartridges. Activations per cartridge range from 1700 up to 4250, depending on product. Meets ADA guidelines.



## FIT TOUCH-FREE DISPENSER

**PB00HEN02AW** · 3/CASE (Ivory)  
**PB00HEN02AX** · 3/CASE (Slate)

**Touch-Free Dispenser.** Minimizes risk of cross-contamination. Easily view soap level with translucent side panel. Up to 1425 activations per cartridge. Adjustable dosing. Meets ADA guidelines.





**ONE BRAND  
FOUR  
INDUSTRIES**

**Institutional  
Grocery & Retail Food  
INDUSTRIAL SERIES  
VEHICLE CARE**

**PROBLEND™**

Professional Cleaning Solutions



PROBLEND™



# housekeeping

Fresh. Sparkling. Clean.

From guest rooms to public restrooms and every room in between, ProBlend housekeeping solutions go far Beyond Clean... They brighten, sanitize, disinfect, deodorize, sparkle, polish, protect and maintain rooms and fixtures from floor to ceiling. For the health and safety of occupants and guests. For the benefit of your organization.

## Bathroom Cleaners



### ATTENDANT

**14062**  
6/1 QT

Ready to Use Non-Corrosive Bathroom Cleaner. For all restroom surfaces including counters, walls, floors, fixtures, basins, tubs, and tile. Removes mold and mildew from porcelain and chrome.



### ERASER

**12690**  
6/1 QT

Ready to Use Non-Acid Bathroom Cleaner. Powerful cleaner and destainer removes challenging stains including mildew, food stains, and discoloration. Contains chlorine bleach. Floral fragrance.



### GREEN CARE OXYGENATED CLEANER

**14081**  
4/1 GAL

Non-Corrosive Bathroom Cleaner. Concentrated environmentally preferable cleaner, fortified with natural citrus cleaning power and hydrogen peroxide. It attacks stubborn soils and stains on virtually all surfaces not harmed by water. Citrus fragrance.



### GREEN CARE OXYGEN POWER RTU

**14088**  
6/1 QT

Ready to Use Non-Corrosive Bathroom Cleaner. Environmentally preferable formula cleans with the natural power of citrus and hydrogen peroxide. This multi-functional cleaner gets rid of stubborn soils on most surfaces not harmed by water. Citrus fragrance.



### SPARKLE BATH

**12820**  
12/1 QT

Ready to Use Tub & Toilet Cleaner. Powerful formula quickly removes mineral deposits, water stains and soils from restroom surfaces. Its viscous liquid gives it excellent cling-ability on vertical surfaces. Wintergreen fragrance.

## All Purpose Cleaners



### CITRUS CLEAN

**15120**  
4/1 GAL

Citrus Degreaser. Concentrated all purpose cleaner/degreaser contains d-limonene, a natural citrus solvent. It provides exceptional cleaning performance of both fat and petroleum based soils. Removes adhesive residue. Citrus fragrance.



### CREAM CLEAN

**PBOONYC01AC** · 12/1 QT

Cream Cleanser. Removes unsightly stains and polishes surfaces in one step. Nonabrasive scouring agents safely clean surfaces including porcelain, chrome, plastic, fiberglass, stainless steel, brass, copper, etc. Fresh floral scent.



### LAVENDER Q CLEANER

**COMING SOON**  
4/1 GAL

Quaternary Cleaner & Odor Counteractant. Concentrated. For use on hard surfaces such as floors, walls, in dumpsters, and other areas where odors can be a problem. Lavender fragrance.



### PINE Q CLEANER

**19740**  
4/1 GAL

Quaternary Cleaner & Odor Counteractant. Concentrated. For use on hard surfaces, such as floors, walls, in dumpsters and other areas where odors can be a problem. Pine fragrance.



## Polishes



### ENHANCE

**PB00QUE01AA** · 12/14.5 OZ

Stainless Steel Cleaner. Aerosol spray. Oil based cleaner brightens, polishes and protects stainless steel by forming a shield that resists watermarks and rust. Also great for aluminum, chrome, Formica®, porcelain and ceramic tile. Lemon fragrance.



### METAL BRITE

**22020**  
6/1 QT

Ready To Use Stainless Steel Cleaner & Polish. Mineral oil based. Removes grease, soils, water stains, fingerprints and tarnish from surfaces. It leaves a brilliant shine on polished metal surfaces. Lemon fragrance.



### REJUVENATE

**PB00QUE01AB** · 12/17 OZ

Beeswax & Mink Oil Polish. Aerosol spray. Cleans all wood surfaces. Restores color and gloss, eliminates small scratches and blemishes and replaces essential oils in natural or treated wood surfaces. Lemon fragrance.



## Glass Cleaners



### CLEAR VIEW CONCENTRATE

**23040**  
4/1 GAL

Glass & Hard Surface Cleaner. Highly concentrated. Cleaner creates a spotless, streak-free shine. In diluted form it can be used for cleaning glass, stainless steel, plastic, vinyl, and tile.



### CLEAR VIEW RTU

**23140**  
6/1 QT

Ready To Use Glass & Hard Surface Cleaner. Can be used for cleaning glass, stainless steel, plastic, vinyl, and tile. Use for a spotless streak-free shine on most hard surfaces.

## Carpet Cleaners



### ENZYME SPOTTER

**14050**  
6/1 QT · 4/1 GAL

RTU Carpet Spotter. This highly effective spotter uses the power of enzymes and surfactants to break down the source of spots, stains and odors, leaving the carpet clean and fresh. Kiwi peach fragrance.



### EXTRACT ALL

**14050**  
4/1 GAL

Carpet Extraction Cleaner. Formulated with enzymes and state of the art surfactants. Brings carpet fibers back to life and leaves no sticky residue to attract soil to carpet. Kiwi peach fragrance.



### SPOTS AWAY

**PB00QUE01AC** · 12/18 OZ

Water-Based Carpet Spot & Stain Remover. Aerosol spray. Effectively cleans all types of spots and stains without damaging carpet fabrics. Neutralizes odors and leaves a pleasant fragrance.

# Dial® EcoSmart Amenity System

Replaces small amenity bottles... saving time, money and the environment.



## RADIANT CITRUS SHAMPOO

**PBOOHEN02AN** • 6/15 OZ

Highly Laminating Shampoo. Quench thirsty hair with shampoo that nourishes, hydrates and protects dry, brittle hair from further damage. Leaves hair restored and radiant. Pure citrus extracts create a natural boost for incredibly, shiny hair.



## RADIANT CITRUS CONDITIONER

**PBOOHEN02AO** • 6/15 OZ

Highly Laminating Conditioner. Repairs dry and damaged hair. Specially formulated to hydrate, smooth and restore hair. Leaves hair renewed with radiance.



## SPRING WATER® BODY WASH

**PBOOHEN02AM** • 6/15 OZ

All Day Freshness Refreshing Body Wash. Brace yourself for this crystal clear wash infused with freshness, from its brisk scent to its feather-light moisturizers, it leaves your skin feeling healthy and rejuvenated.



## 7-DAY MOISTURIZING LOTION

**PBOOHEN02AP** • 6/15 OZ

Hypoallergenic Lotion with Shea Butter. Deeply hydrates skin with a non-greasy fast absorbing formula. Infused with 7 Bionutrients including vitamins and minerals to help keep your skin looking and feeling healthier and more beautiful. Dermatologist tested.



## ECOSMART DISPENSER

**PBOOHEN02AK** • 6/CASE (CREAM)

**PBOOHEN02AL** • 6/CASE (BLACK)

Amenity Dispenser. Locking mechanism prevents tampering and vandalism. Bottle reservoir holds 70 mL of product to ensure uninterrupted service to customers. Each push dispenses 1 mL.



### Features & Benefits:

- Reduces the time required to set up each room, increasing housekeeping's efficiency
- At least 50% cost savings over traditional amenities
- Each refill keeps approximately 220 small amenity bottles out of landfills



## Restroom Care



### CITRUS SPLASH

**PB00VEC01AO** · 12/2.6 OZ

Odor Neutralizer. Ideal for restrooms, offices, nursing homes, hotels and classrooms. Its complex and long lasting citrus fragrance is a bright burst of citrus fruits. VOC/California CARB compliant.



### LINEN WAVE

**PB00VEC01AP** · 12/2.6 OZ

Odor Neutralizer. Ideal for restrooms, offices, nursing homes, hotels and classrooms. Its complex and long lasting linen fragrance is a gentle breeze of clean linen. VOC/California CARB compliant.



### AIR CARE DISPENSER

**PB00VEC01AQ** · EACH

Odor Neutralizer Dispenser. For restrooms, offices, nursing homes, hotels and classrooms. VOC/California CARB compliant.



### ANTIMICROBIAL URINAL MAT

**PB00WIZ01AB** · 12/CASE

Urinal Mat. Inhibits odors with built-in antimicrobial compounds and lasts up to a month in most locations. No maintenance, just mop/wipe around the mat as needed. Its carpet like texture and fiber configuration promote rapid air drying.



### SPLASH HOG URINAL SCREEN

**PB00WIZ01AA** · 6/CASE

Urinal Screen. Hedgehog-like spines drastically reduce splash back and provide a clean pleasant fragrance. The powerful Clean fragrance lasts for 60 days and replaces the need for a room deodorizer.

## Rachael Tolliver RTU Fragrance Collection



### LEMON VERBENA

**27257**  
6/1 QT

Ready to Use Odor Counteractant. Elegant and refined verbena tea, olive leaf, silver sage, green melon and crisp bergamot with a white floral bouquet of lily and camellia blooms.



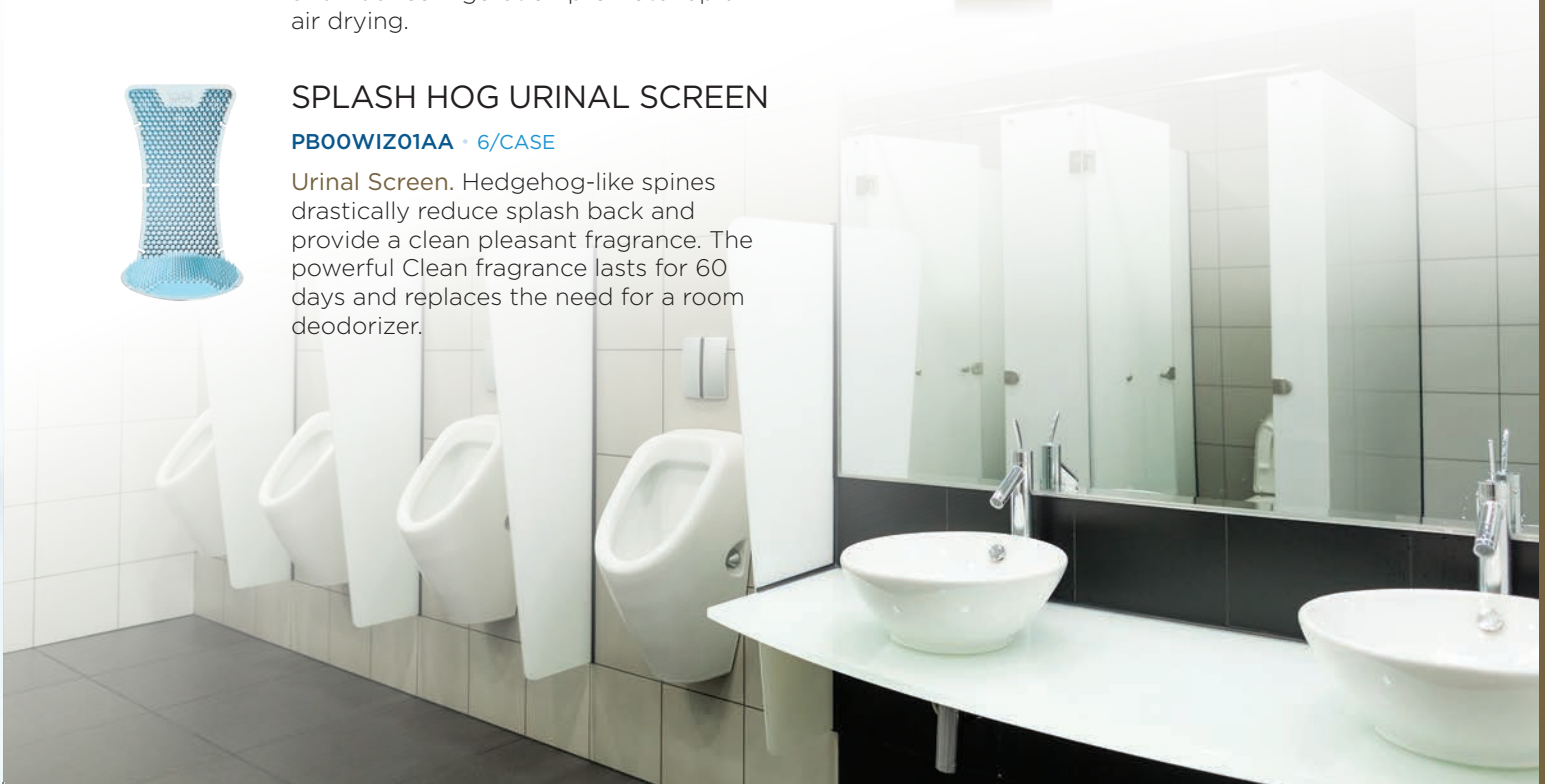
### LINEN FRESH

**27258**  
6/1 QT

Ready to Use Fabric Refresher & Softener. Refreshes sheets and towels for increased guest satisfaction scores. Relaxing scent of lavender, jasmine and a hint of apple.



*Eliminates odors at the source including smoke, mildew, pet odors and urine.*





# HYscent

## STEALTH System

The Ultimate Fragrance Diffuser

Perfect for fragrancing large indoor spaces.

### Fragrance Refills

*Refills will last up to 30 days.*



#### CRISP LINEN

**PB00HYS01AA** · 6/CASE

The feeling of freshly laundered linen is captured through notes of crisp cucumber, silky jasmine and a hint of cedarwood.



#### FRAGRANCE FREE

**PB00HYS01AD** · 6/CASE

Eliminates malodors with no added fragrance. It contains Oleris® Methyl Undecylenate Odor Eliminator which is known for its anti-odor properties.



#### LAVENDER FIELDS

**PB00HYS01AB** · 6/CASE

French lavender is enhanced by rich notes of vanilla, white petals and patchouli to evoke the rolling hills of Provence.



#### SWEET MANGO

**PB00HYS01AE** · 6/CASE

Escape to a tropical paradise! A fresh island breeze carries notes of mango, pineapple and peach over a heart of exotic florals and sugared musk.



#### WARM VANILLA

**PB00HYS01AC** · 6/CASE

Warm vanilla is captured through notes of vanilla absolute wrapped in creamy caramel, melted butter and a whisper of hazelnut.



#### STEALTH UNIT

**PB00HYS01AF** · EACH (White)  
**COMING SOON** · EACH (Black)

Commercial fragrance diffuser for large spaces up to 3500 sq ft. Includes a digital timer, six refill ports, seven fan speeds, and remote control.



#### STEALTH WALL MOUNT

**PB00HYS01AG** · EACH (White)  
**COMING SOON** · EACH (Black)

Mount the Stealth on the wall using the multidirectional wall mount which aids in directing the fragrance release towards the center of the space.



# Productivity at its Best... Precise Measuring Plus Powerful Cleaning!

## PROBLEND™

### GALAXY DISPENSING SYSTEMS

ProBlend's GALAXY Dispensing System makes filling bottles, buckets and equipment easier, safer, and more accurate. It is the cleaning industry's comprehensive housekeeping system, designed for hospitality, building service contractors, schools, government facilities and other businesses who need safe and flexible dilution and dispensing of product.

GALAXY has a sleek design and modern appearance in any housekeeping environment, plus multiple features to enhance productivity and dispensing flexibility. With AccuPro technology, eliminate dilution variance and ensure you are never using too much or too little chemical. You will always be dispensing the right amount!



Safe Link Closed Loop Chemical Management System for easy use of chemicals and change-out



#### Features & Benefits:

- Eliminates chemical carryover between products
- Low-cost dispensing — uses fewer components to deliver multiple product dilutions and flow rates
- Combination of low and high flow rates, using separate eductors
- Easy to maintain and repair
- Quad diverter valve easily identifies product being dispensed to avoid errors
- Can be used with proprietary chemical connection fittings and is easily customizable
- E-Gap eductors provides backflow protection



# GALAXY Dispensing System



## GALAXY-10 LEMON VERBENA

**27215**  
2/1 GAL

**ODOR COUNTERACTANT.** Eliminates odors at the source including smoke, mildew, pet odors and urine. Soothes and relaxes. Elegant and refined verbena tea, olive leaf, silver sage, green melon and crisp bergamot with a white floral bouquet of lily and camellia blooms.



## GALAXY-12 LINEN FRESH

**27225**  
2/1 GAL

**FABRIC REFRESHER & SOFTENER**  
Specially designed odor counteractant to refresh sheets and towels for increased guest satisfaction scores. Relaxing scent of lavender, jasmine and a hint of apple.



## GALAXY-13 MOUNTAIN MIST

**27259**  
2/1 GAL

**FABRIC REFRESHER & SOFTENER**  
Specially designed odor counteractant to refresh sheets and towels for increased guest satisfaction scores. Refreshing scent of cascading crystal waters infused crisp citrus extracts.



## GALAXY-14 LAVENDER FRESH

**27205**  
2/1 GAL

**AIR FRESHENER.** Neutralizes odors while providing a pleasing and long lasting scent in areas prone to odors. Let your cares drift away with the relaxing scent of lavender, rose and orange blossom warmed with vanilla and tranquil woods.



## GALAXY-15 POLYNESIAN TIARE

**13685**  
2/1 GAL

**AIR FRESHENER.** Neutralizes odors while providing a pleasing and long lasting scent in areas prone to odors. Enjoy the cool ocean breezes swirling with sweet flower petals engulfed with teak wood.



## GALAXY-20 BATH FORCE ULTRA

**27263**  
2/1 GAL

**BATHROOM.** Ultra Concentrated Bathroom Cleaner. Hard water formula for all restroom surfaces including tile, tubs, showers and toilet areas. Removes mold and mildew from porcelain and chrome. Long lasting lavender fresh fragrance.



## GALAXY-21 BATHROOM DISINFECTANT

**27240**  
2/1 GAL

**BATHROOM.** Non-acid Bathroom Cleaner. Cleans, disinfects and deodorizes in a single step. Concentrated formulation for use in hotels, nursing homes and assisted living facilities. EPA registered.



## GALAXY-22 GREEN CARE OXYGEN POWER

**14081**  
2/1 GAL

**BATHROOM.** Non-Corrosive Bathroom Cleaner. Concentrated environmentally preferable cleaner, fortified with natural citrus cleaning power and hydrogen peroxide. It attacks stubborn soils and stains on virtually all surfaces not harmed by water. Citrus fragrance.



## GALAXY-25 CITRUS TUB & TILE

**27210**  
2/1 GAL

**BATHROOM.** Acid Bathroom Cleaner. Concentrated non-corrosive, non-fuming acid cleaner removes hard water scale, alkaline detergent build-up, dirt and rust. Renews original brightness on stainless steel and chrome surfaces. Lemon fragrance.





## GALAXY-30 ECO CLEAR

**14076**  
2/1 GAL

**GLASS.** Streak free cleaning of windows, mirrors, metal, chrome, plastic, fiberglass, plexiglass and other hard surfaces. Cleans tough soils, oily film, fingerprints, smears and smudges. VOC free.



## GALAXY-31 CLEAR VISION

**23040**  
2/1 GAL

**GLASS.** Highly concentrated glass and hard surface cleaner creates a spotless, streak-free shine. In diluted form it can be used for cleaning glass, stainless steel, plastic, vinyl, and tile.



## GALAXY-40 EASY MOP

**18570**  
2/1 GAL

**FLOOR.** Neutral Floor Cleaner. Easy Mop floor cleaner is solvent free and won't dull high gloss floor finishes. Environmentally friendly and phosphate free, it easily removes dirt, oil and grease, leaving a pleasing citrus fragrance.



## GALAXY-41 ENVIRO MOP

**BIO23**  
2/1 GAL

**FLOOR.** Microbial Floor Cleaner. Everyday use floor cleaner and drain maintainer. Delivers superior floor cleaning, odor control, drain and trap maintenance, environmental benefits and flexibility. Effectively removes the food sources of fruit flies. Fresh fragrance.



## GALAXY-50 GREEN OXY PLUS

**14081**  
2/1 GAL

**ALL PURPOSE.** Fortified with hydrogen peroxide and natural citrus cleaning power Green Wave Oxy Plus attacks stubborn soils and stains on any surface not harmed by water. Environmentally preferred cleaner. Citrus fragrance.



## GALAXY-51 WAVE PLUS

**RD102**  
2/1 GAL

**ALL PURPOSE.** All purpose cleaner removes stains and soils from hard surfaces including furniture, countertops and non-skid tub surfaces. Bold citrus fragrance.



## GALAXY-53 LAVENDER PLUS

**16600**  
2/1 GAL

**ALL PURPOSE.** Unique multi-purpose concentrated cleaner and degreaser, formulated for removing soil, grease and grime from any washable surface. Bold lavender fragrance.



## GALAXY-54 NEUTRAL DISINFECTANT

**27241**  
2/1 GAL

**ALL PURPOSE.** Disinfectant, cleaner and deodorizer with neutral pH formula. Concentrated formulation for use in hotels, nursing homes and assisted living facilities. EPA registered.



## GALAXY-55 ALL PURPOSE DISINFECTANT

**COMING SOON**  
2/1 GAL

**ALL PURPOSE.** Disinfectant, cleaner and deodorizer for use in hotels, cruise lines, nursing homes and other commercial sites. Kills Norovirus. Lavender scent. EPA registered.



NEW

**A.C.E.** Accessible  
Confidence  
Economical

Ready To Use label design  
for GALAXY products



**It's more ACCESSIBLE** - Expanding our original bilingual directions, we've added easy to follow numbered steps and icons.

**Create's CONFIDENCE** -How, when and what is needed to use the product is quickly found with intuitive icons and easy to follow numbered steps.

**Even more ECONOMICAL** - Ease of use and understanding translates right back to the wallet, with correct product usage saving both time and money.

housekeeping





PROBLEND™



# laundry

Bright. Soft. Impressive.

Brighter colors. Whiter whites. Softer towels and sheets. Cleaner uniforms. Whatever your commercial or industrial laundry need, ProBlend can help with high performance solutions and efficient systems – all designed to impress employees and guests and brighten your bottom line.

## Alkali, Solvent and Conditioner



### BREAK OUT

**16900**  
5 GAL • 15 GAL • 55 GAL

**Alkali Booster.** Concentrated laundry break contains soil dispersants, suspending agents, alkaline builders and water conditioners. Ideal for use where heavy grease based soils occur. Can be used in all water conditions.



### CONDITIONER SE

**21025**  
5 GAL

**Laundry Conditioner.** Enhances laundry detergent performance in hard water environments. Water conditioner may be metered directly into laundry water supply.



### LINEN BOOST

**22679**  
5 GAL

**Solvent Detergent Booster.** This product provides a boost of power to remove extra heavy oily and greasy soils. Works best as a prewash or use as a detergent additive on medication, food, oil and adhesive soils.

## Detergents



### DETERGENT PLUS

**17005**  
5 GAL • 15 GAL • 55 GAL

**Oil Releasing Detergent.** Great liquid laundry detergent for oily and greasy soils like lipstick, shoe polish and sun tan lotion. It has a synergistic blend of surfactants plus powerful dispersants to emulsify and suspend soils. Citrus fragrance.



### ENZYME POWER

**16905**  
5 GAL • 15 GAL

**Enzyme Liquid Laundry Detergent.** Simplify the laundering process by eliminating laundry break and sour steps. Enzyme Power does not require high alkalinity, can be used as a presoak and performs well in lower temperatures. Citrus fragrance.



### ES LAUNDRY BRIGHT

**23385**  
2.5 GAL • 5 GAL • 15 GAL

**Dual Detergent.** One shot low temperature liquid formulation consisting of alkaline builders blended with emulsifiers for commercial liquid laundry systems. Excellent for use on linens in hotels, motels, and nursing homes.



### SUDS ALL

**15780**  
5 GAL

**Unbuil Laundry Detergent.** High-sudsing detergent with a moderate pH contains powerful surfactants to emulsify soils during the wash cycle. Best for light to medium soiled laundry in home style machines. Citrus fragrance.



### TRIBUTE



**27243**  
72/2 OZ • 2/1 GAL • 2.5 GAL • 5 GAL • 15 GAL

**High Efficiency Laundry Detergent.** Powerful surfactants to clean linen, but at the same time treats fabric threads gently while removing soils. Cold and hot water formula. Clean fresh fragrance. *Available in single-use packets!*





## VICTORY

**27245**  
2.5 GAL

**Dye & Fragrance Free Detergent.** *Hypoallergenic.* HE, High Efficiency, laundry detergent has powerful surfactants to remove soils, while at the same time is gentle on skin. Cold and hot water formula.



## NEW CLEAN

**12540**  
50 LB

**Low Foam Powder Detergent.** Formulated for soils found in hotels, motels, nursing homes and dormitories. Acceptable for use in HE front loading low foam laundry machines. Citrus fragrance.



## WAVE

**13775**  
5 GAL • 15 GAL • 55 GAL

**Economical Laundry Detergent.** Uniquely formulated concentrate cleans and brightens linens and other fabrics with optical brighteners. For use in home and commercial machines.



## NEW CLEAN III

**12665**  
50 LB

**Value Added Powder Detergent.** Use to gently remove soils and leave clean, refreshed linen. Use in institutional and commercial industries, in both front loading and top loading washing machines. Citrus fragrance.



## ENZYME CLEAN

**14190**  
4/9 LB • 50 LB

**Multifunctional Laundry Detergent.** Contains color safe bleach and optical brighteners. Use as a presoak for naturally occurring stains. Works in low temperatures and will not harm fabrics. Citrus fragrance.



## OPTI-BRITE

**11691**  
50 LB

**All-In-One Powder Detergent.** This premium detergent drastically reduces bleaching with regular use. Its intense optical brightening system produces brilliant colors and bright whites. Effective at all temperatures. Clean fresh fragrance.



## LINEN BUILT

**18080**  
50 LB

**Built Powder Detergent.** Contains surfactants, dispersants, water conditioners and no caustic alkalis. Excellent grease remover. Great for uniforms, bed linens and bar mops. Citrus fragrance.



## Destainers



### CHLOR WHITE

**05205**

2.5 GAL • 5 GAL • 15 GAL • 55 GAL

**Liquid Laundry Bleach.** Maximum strength liquid bleach. Safe on cotton and synthetic fabrics. Can be used as a soil removal aid or as a destaining presoak for blood and protein stains. Not for use on natural silk, wool or nylon fibers.



### OXY BRILLIANT

**17150**

2.5 GAL • 5 GAL • 15 GAL

**Color Safe Bleach.** Concentrated peroxide bleach blended for safe bleaching of colored fabrics, clothes and textiles. This extremely concentrated oxygen compound is safe for most fabrics and dyes when used as directed.

# PROBLEND™

*Electronic service reporting  
that meets your every day  
operational needs.*

## Sour



### SOUR ADVANCED

**27242**

5 GAL

**Ultra Concentrated Acid Neutralizer.** For commercial laundries provides superior pH control, and enhances white linen. Great for use in tunnel washers



### SOUR ALL

**22630**

5 GAL

**Laundry Neutralizer.** Concentrated acid based liquid neutralizer and anti-rust agent specially formulated for commercial laundries.



### SOUR EXTRA

**16894**

5 GAL • 15 GAL • 55 GAL

**Iron Removing Laundry Neutralizer.** Blended acid based liquid laundry neutralizer with superior iron/rust removing properties prevents and removes red iron spots, brightens yellowing linens and reduces pH to prevent browning when linens are ironed.



## Softeners



### SOFT LAVENDER

27253  
5 GAL

**Lavender fragrance.** Concentrated ultra fabric softener with Soft Touch technology. Reduces static and leaves linen soft. *25% more fragrance!*



### SOFT SELECT

27247  
2.5 GAL • 5 GAL • 15 GAL

**Springtime fragrance.** Concentrated ultra fabric softener with Soft Touch technology leaves linen smelling fresh.



### SOFT SUNSET

27249  
5 GAL • 15 GAL

**Island Escape fragrance.** Concentrated ultra fabric softener with Soft Touch technology. Reduces static and leaves linen soft.



### SOFT TOUCH

17340  
5 GAL

**Citrus fragrance.** Concentrated fabric softener for commercial and industrial automated laundry dispensing systems. Minimizes wrinkling, increases softness, reduces static electricity.



### SOFT TOUCH PLUS

27071  
5 GAL • 15 GAL • 55 GAL

**April Fresh fragrance.** Concentrated fabric softener minimizes wrinkling, increases softness and reduces static electricity. Its controlled viscosity allows for uniform dispensing in commercial and industrial laundry applications.

## Sour/Softener



### SOUR/SOFT PLUS

16898  
5 GAL • 15 GAL

**Citrus fragrance.** Concentrated, economical, acid based neutralizer and anti-yellowing agent for use in commercial laundries. Sour/Soft Plus reduces the residual alkalinity in clothes and linens.

## Sizing



### SIZE ALL

PB00ALP01AD • 5 GAL  
PB00ALP01AC • 15 GAL

**Laundry Starch for Natural Fabrics.** High performance blue emulsion elegantly imparts stiffness and body to linens. Size All is ideal for natural and polyester blends. It also does an excellent job with all other fabrics. Pleasant fragrance.



### SIZE QUANTERA

PB00COL12AA • 5 GAL

**Laundry Sizing for Synthetic Fabrics.** Synthetic sizing designed for polyester and polyester blends. Size Quanterla adds body giving crisp lines to table linens and makes for a stiffer napkin.



## Pre-Spotters



### STAIN PRO B

27185  
6/1 QT

**Blood Stain Pre-Spotter.** Blood stains are easily removed from linens and other fabric by pre-spotting before laundering with high performance Stain Pro B. Professionally formulated to maximize results.



### STAIN PRO C

12690  
6/1 QT

**Pre-Spotter with Bleach.** Excellent chlorine infused pre-spotting agent for use on white linen. Removes a broad range of stains including coffee, wine, fruit juice, mildew and mustard. Linen must be chlorine bleach compatible. Floral fragrance.



### STAIN PRO E

14050  
6/1 QT

**Prespotter with Enzymes.** Powerful enzyme formula for use in the pre-spotting process. Removes challenging grass, ink, chocolate, ketchup, gravy and other food color stains. Excellent for pre-spotting cuffs. Kiwi peach fragrance.



### STAIN PRO O

22679  
6/1 QT

**Oily Stain Pre-Spotter.** Specifically formulated to tackle the toughest oily stains. With a special blend of solvents, surfactants and boosters, Stain Pro O is designed to remove medicine, oil, lipstick, shoe polish and similar oily stains. Citrus fragrance.



### STAIN PRO R

27190  
6/1 QT

**Rust Stain Prespotter.** Gets rust out! Superb, concentrated iron removing formula, designed to pre-spot rust stains on linens.

## Reclaim



### STAIN PRO 1

27170  
10/1.5 LB + 20 LB

**Engineered for White Linen.** Reclaims hard to remove stains missed in pre-spotting procedures or washing process. Stain Pro 1 in your operation will put linen back in service, saving you time and money.



### STAIN PRO 2

27175  
10/1.5 LB

**Specifically for Colored Linen.** Stain Pro 2 reclaims challenging stains missed in the pre-spotting procedure, putting more linens back in service and ultimately saving money and time.



### STAIN PRO 3

04950  
10/1 LB

**Designed for Removing Rust Stains from Linen.** One-step process added to the wash wheel will reclaim linen missed by pre-spotting. Stain Pro 3 will save linen and money for commercial laundry operations.



# Revolutionary Dispensing System, So Sophisticated It's Simple.

# PROBLEND™

## ORION LAUNDRY SYSTEMS



ProBlend's state-of-the-art ORION Laundry System is reliable, easy to use, and flexible for almost any commercial or industrial environment. It accurately measures and dispenses selected ORION detergents and processing chemicals into the wash wheel in exact dosages, eliminating the need for manual labor, saving your operation both time and money.

The ORION Laundry System is simple yet sophisticated. It works with tunnel machines, mechanically-, card reader- and PLC-controlled machines, small wash extractors and large intelligent and non-intelligent machines. It's ideal for a broad range of on premise laundry operations.

### Features & Benefits:

- Low-maintenance and Venturi-based
- Available in 4, 6 and 8 product configurations with 2 flow rates
- Integrated flush manifold, compact design and no squeeze tubes
- Unit only has to be calibrated ONCE and will not under dose chemicals
- Uses less water due to eductor that restricts flow
- Saves energy by not using AC or DC motors
- Controller has a 20 formula capacity and features Auto Formula Select
- Premium reporting capabilities easily downloaded to a USB flash drive
- All programming is protected by your own chosen passcode

Safe Link Closed Loop  
Chemical Management  
System for easy use of  
chemicals and change-out



# ORION Laundry System



## ORION-10 ALKALI

16900  
2/1 GAL

**ALKALI. Alkali Booster.** Concentrated liquid laundry break is ideal for use where heavy grease based soils occur. Formulated for use in the suds cycle in small to medium on premise laundry systems. For use in all water conditions.



## ORION-30 CHLOR BRIGHT

05205  
2/1 GAL

**DESTAINER. Liquid Laundry Bleach.** Concentrated sodium hypochlorite solution can be used as a soil removal aid or as a destaining presoak for difficult protein stains. Safe on cotton and synthetic fabrics. Not for use on natural silk, wool or nylon fibers.



## ORION-20 DETERGENT

13775  
2/1 GAL

**DETERGENT. Concentrated Laundry Detergent.** Contains anionic and nonionic surfactants and powerful dispersants to emulsify and suspend soils in liquid laundry systems. Leaves no alkaline residue in clothes.



## ORION-31 OXY VIVID

17150  
2/1 GAL

**DESTAINER. Color Safe Bleach.** Peroxide bleach for safe bleaching of colored fabrics, clothes, and textiles. This extremely concentrated oxygen compound, is safe for most fabrics and dyes when used as directed. It will not cause yellowing.



## ORION-21 VECTOR

27243  
2/1 GAL

**DETERGENT. High Efficiency Laundry Detergent.** It has powerful surfactants to clean linen, but at the same time treats fabric threads gently while removing soils. Cold and hot water formula. Clean fresh fragrance.



## ORION-41 SOUR ULTRA

27242  
2/1 GAL

**SOUR. Laundry Neutralizer.** Acid neutralizer for commercial laundries is ultra concentrated, provides superior pH control, and brightens linen.



## ORION-23 ES-9000

23385  
2/1 GAL

**DETERGENT. Dual Detergent.** Concentrated low temperature laundry detergent with powerful surfactants and alkalis to remove soil without leaving linens feeling rough.



## ORION-52 SUNBURST

27247  
2/1 GAL

**SOFTENER. Springtime fragrance.** Concentrated ultra fabric softener with Soft Touch technology leaves linen smelling fresh.





PROBLEND™



# floor care

Durable. Resilient. Efficient.

Revitalize and reinvigorate your flooring with ProBlend's high performance, resilient floor care products. Our floor care program is designed to maintain, enhance and beautify the floors in your buildings, with reduced labor and material costs.

## Floor Care



### ENZYME SPOTTER

**14050**  
6/1 QT · 4/1 GAL

**RTU Carpet Spotter.** This highly effective spotter uses the power of enzymes and surfactants to break down the source of spots, stains and odors, leaving the carpet clean and fresh. Kiwi peach fragrance.



### SPOTS AWAY

**PB00QUE01AC · 12/18 OZ**

**Water-Based Carpet Spot & Stain Remover.** Aerosol spray. Effectively cleans all types of spots and stains without damaging carpet fabrics. Neutralizes odors and leaves a pleasant fragrance.



### EXTRACT ALL

**14050**  
4/1 GAL

**Carpet Extraction Cleaner.** Formulated with enzymes and state of the art surfactants. Brings carpet fibers back to life and leaves no sticky residue to attract soil to carpet. Kiwi peach fragrance.





PROBLEND™



# equipment & tools

Reliable. Flexible. Ownable.

ProBlend's line of durable, reliable cleaning machinery is designed to meet the needs of your business today and tomorrow. Financing programs include purchase, lease or rent to own, with flexible, competitive terms. Your local ProBlend representative can help you determine the equipment and program that's right for you.

# SCBA Decon Washer



Everything is clean and free from contamination in just a few minutes.

**Contaminated Gear a Constant Health Risk.** SCBA (Self Contained Breathing Apparatus) and protective gear is a life insurance for firemen and women. On an emergency call, soot particles and combustion gases are absorbed by the protective gear, contaminating it. Therefore, it's important to decontaminate it immediately upon return to the station.

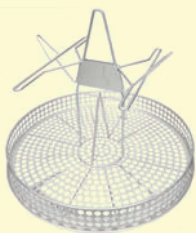
Cleaning by Hand	VS	SCBA Decon Washer
30 minutes per set		8 minute cycle for SCBAs
Unprotected exposure to toxic residues on SCBA		Ergonomic process minimizes contact with contaminated materials
Prolonged exposure to toxins put firemen & women at a greater risk of cancer		Minimizes exposure with sealed, self-contained cleaning process

**Solo Rescue®** cleans SCBA smokediver gear (steel, composite, rubber, fabric, plastic etc.) from residues of combustion gases, soot particles and toxins in just a few minutes and contributes to a significantly improved working environment for rescue service personnel.

**Developed In Close Contact With The Swedish Rescue Service** to meet the needs for cleaning contaminated equipment in the best way possible. Solo Rescue has a specially adapted interior and accessories to ease the cleaning of SCBA, gloves, boots and helmets.

**Compact, Easy And Efficient.** Fits in less than 11 ft<sup>2</sup> with a lower door that folds out, acting as a loading table when opened. Two efficient wash programs: Choose between a 2 minute cycle for gloves and helmets or a 5 minute cycle for SCBAs.

## Accessories



**INCLUDED**  
**Standard basket + Single/ Double Cylinder Holder.** The basket and SCBA holder for single and double cylinders, including masks can clean up to 15 SCBAs per hour.



**OPTIONAL**  
**Holder for Jumbo Cylinders.** Washes 2 cylinders at a time.



**Holder for Gloves, Helmets and Boots.** Basket fits 2 holders at a time for full capacity. At full capacity it can clean 160 gloves per hour, 60 pairs of boots per hour, or 100 helmets per hour.



# Dishmachines - Chemical Sanitizing Door Type



## WAREFORCE® I-X

**External Sump.** Single rack, convertible for straight-through or corner application, 90-second cycle, 37 racks per hour, 1.5 gallons per rack, self-draining stainless steel wash pump assembly, air gap, electromechanical timer, top mounted controls, delimer switch, low product indicator light, built-in chemical pumps and priming switches, auto start/stop, built-in stainless steel scrap accumulator.



## WAREFORCE® I-E

**Internal Sump.** Single rack, convertible for straight-through or corner application, 90-second cycle, 39 racks per hour, 1.02 gallons per rack, self-draining stainless steel wash pump assembly, air gap, electromechanical timer, top mounted controls, delimer switch, low product indicator light, built-in chemical pumps and priming switches, auto start/stop, built-in stainless steel scrap accumulator.



## WAREFORCE® I-E-FL (Front Loading Machine) WAREFORCE® I-E-LTH (with booster heater)



## WAREFORCE® I-HH

**Internal Sump.** 27" tall chamber, single rack, convertible for straight-through or corner application, 90-second cycle, 39 racks per hour, 1.61 gallons per rack, self-draining stainless steel wash pump assembly, air gap, electromechanical timer, top mounted controls, delimer switch, low product indicator light, built-in chemical pumps and priming switches, auto start/stop, built-in stainless steel scrap accumulator, internal sump.



## WAREFORCE® II

Dual rack straight, 74 racks per hour, 1.17 gallons per rack, self-draining stainless steel wash pump assembly, air gap, electromechanical timer, three selectable wash cycles, top mounted controls, delimer switch, low product indicator light, built-in chemical pumps and priming switches, auto start/stop, built-in stainless steel scrap accumulator.



## WAREFORCE® IIC

**Same specifications as the WAREFORCE® II,** except for corner installations. Please specify right front (R) or left front (L) door opening.

## Dishmachines - High Temperature Sanitizing Door Type



### WAREFORCE® HT-180

Single rack, field convertible for straight-through or corner application, electric tank heat, built-in booster heater with Sani-Sure™ final rinse system, 58 racks per hour, 0.89 gallons per rack, self-draining stainless steel wash pump assembly, universal timer, four selectable wash cycles, top mounted controls, delimer switch, auto start/stop, exhaust vent fan control, front stainless steel dress panel.



### WAREFORCE® HT-180 with Ventless & Energy Recovery

No vent hood required. Accommodates a wide range of water inlet temperatures and operates with only a cold water connection. Same specifications as WAREFORCE HT-180 with the exception of capacity. Cleans 39 racks per hour. Door interlock and pressure regulator included.



### WAREFORCE® HT-180 HH

27" tall chamber, single rack, field convertible for straight-through or corner application, electric tank heat, built-in booster heater with Sani-Sure™ final rinse system, 58 racks per hour, 1.36 gallons per rack, self-draining stainless steel wash pump assembly, dual counter-rotating lower wash arms, universal timer, four selectable wash cycles, top mounted controls, delimer switch, auto start/stop, exhaust vent fan control, front stainless steel dress panel.



### WAREFORCE® HT-180HH with Ventless & Energy Recovery

No vent hood required. Accommodates a wide range of water inlet temperatures and operates with only a cold water connection. Same specs as WAREFORCE HT-180HH with the exception of capacity. Cleans 37 racks per hour. Door interlock and pressure regulator included.



## Dishmachines - Glasswashers



### WAREFORCE® DG-E

**Chemical sanitizing.** Fill and dump with sustaining heater, 90-second cycle, 40 racks per hour, 1.16 gallons per rack, accommodates glasses and wares up to 11" high, functions as both a glasswasher and a dishwasher, easy access controls, electromechanical timer and two half-racks included. Rated by NSF as both a glasswasher and a dishwasher,



### WAREFORCE® DG-HT-E-SEER-S

**High temperature sanitizing.** Recirculating, 20 racks per hour, 0.65 gallons per rack, Soft Start, built-in booster heater with Sani-Sure™ final rinse system, double wall construction, pumped drain, universal timer, digital LED control panel, three selectable cycles, one peg and one combination rack included.



### WAREFORCE® CG

**Chemical sanitizing.** Rotary-type, cleans 1,200 glasses per hour, uses 10 gallons of water per hour, single switch operation, built-in chemical pumps and priming switches, hot or cold fresh water final rinse, convenient chemical storage and easy access scrap screens. Clockwise rotation.

### WAREFORCE® CG-115

115 Volt version of WAREFORCE® CG.



## Dishmachines - Conveyors



### WAREFORCE® 44 CONVEYOR

44" single tank dual-rated conveyor dishmachine with electric tank heat, 225 racks/hour and 0.68 gallons/rack for high temp, 209 racks/hour and 0.78 gallons/rack for chemical sanitizing, Adjust-A-Peak™ conveyor speed, EnergyGuard™ system, 25" standard height clearance, table limit switch, automatic fill, manual/automatic switch, whisper-quiet stainless steel pump assembly, exhaust vent fan control.

### WAREFORCE® 66 CONVEYOR

Same specifications as WAREFORCE® 44, plus 22" pre-wash section.

## Dishmachines - Undercounters



### WAREFORCE® UL30H

**Chemical sanitizing.** Fill and dump with sustaining heater, 24 racks per hour, 1.2 gallons per rack, double-wall construction, stainless steel wash pump assembly, pumped drain, electromechanical timer, delimer switch, low product indicator light, built-in chemical pumps and priming switches, auto fill, auto stop, one peg and one combination rack included.

### WAREFORCE® UH30-FND

**High temperature sanitizing.** Fill and dump, 24 racks per hour, 1.1 gallons per rack, built-in booster heater with Sani-Sure™ final rinse system, double-wall construction, stainless steel wash pump assembly, pumped drain, universal timer, delimer cycle, built-in chemical pumps and priming switches, auto fill, auto stop, one peg and one combination rack included.

## Housekeeping Tools



### MICROFIBER CLOTH

16 X 16 300 gram weight microfiber cloth. Comes in green, red, blue, and yellow colors.

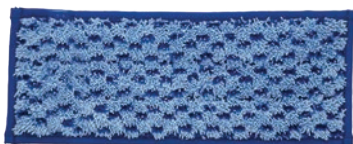
---



### MICROFIBER DUSTER

Flexible duster with 12 inch handle and Wave microfiber sleeve. Sleeve has 2 in long strands to grab and lock dust. Green and white in color.

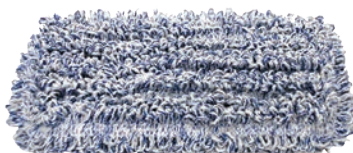
---



### MICROFIBER SCRUB MOP

10 inch microfiber mop pad with pocket backing. Its short loop microfiber and poly-microfiber square block scrubbers make quick work of tough messes. Color coded tabs for easy selection.

---



### WAVE MOP

10 X 5 inch microfiber mop pad made with wave material and hook and loop backing. For use with trowel and wall wash frames. Comes in blue and red colors.

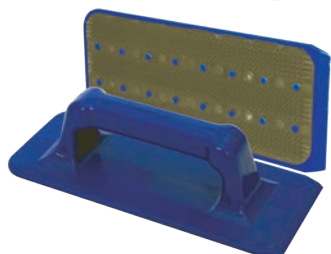
---



### WASH WALL FRAME

9 X 4 inch mop frame with swivel. Hook and loop backing. Blue in color.

---



### TROWEL

9 X 4 inch hand trowel with handle and scrapper edge. Hook and loop backing. Blue in color.

---



### MOP HANDLE

Aluminum telescopic mop handle with gray grip, 39.5 to 72 inches in length. Fits pocket, tab, hook wall wash and MFlex frames.

PROBLEND™

**BEYOND CLEAN.**

[ProBlendSolutions.com](http://ProBlendSolutions.com)

— member of the PROBLEND™ NETWORK —