

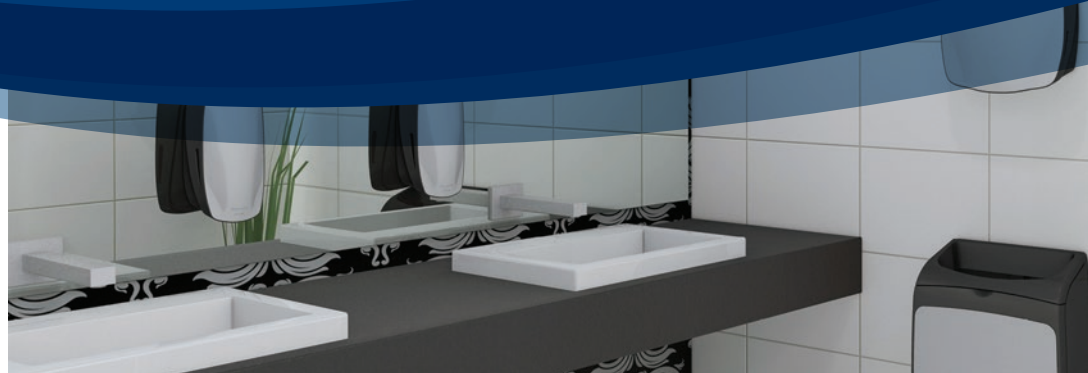
# PROBLEND™



equipment  
& tools


## Professional Cleaning Solutions

[ProBlendSolutions.com](http://ProBlendSolutions.com)



# PROBLEND™

## Table of Contents

● equipment & tools	3
SCBA Decon Washer .....	4 
Dishmachines .....	5
Housekeeping Tools .....	9

## ProBlend Product Categories


- warewash
- workforce™
- emergency services
- hand care
- housekeeping
- laundry
- floor care
- equipment



## BEYOND CLEAN.

ProBlend is a brand of cleaning solutions that goes BEYOND CLEAN... for organizations that buy it, sanitation professionals and service technicians that use it, and customers and guests that enjoy the many benefits of cleaner, healthier environments.

Serving hospitality, education, food service, Building Service Contractors (BSCs), emergency services and municipalities, ProBlend uniquely offers a total commercial cleaning solutions program for these industries. From high performance cleaning and sanitation to reliable, cost-effective systems and equipment, your authorized ProBlend dealer or service provider can recommend the perfect blend of professional ProBlend products to meet the evolving needs of your business today.

legend	
	Environmentally Friendly Products



PROBLEND™



# equipment & tools

Reliable. Flexible. Ownable.

ProBlend's line of durable, reliable cleaning machinery is designed to meet the needs of your business today and tomorrow. Financing programs include purchase, lease or rent to own, with flexible, competitive terms. Your local ProBlend representative can help you determine the equipment and program that's right for you.

# SCBA Decon Washer



Everything is clean and free from contamination in just a few minutes.

**Contaminated Gear a Constant Health Risk.** SCBA (Self Contained Breathing Apparatus) and protective gear is a life insurance for firemen and women. On an emergency call, soot particles and combustion gases are absorbed by the protective gear, contaminating it. Therefore, it's important to decontaminate it immediately upon return to the station.

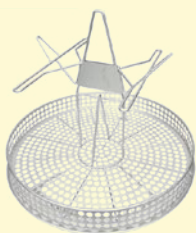
Cleaning by Hand	VS	SCBA Decon Washer
30 minutes per set		8 minute cycle for SCBAs
Unprotected exposure to toxic residues on SCBA		Ergonomic process minimizes contact with contaminated materials
Prolonged exposure to toxins put firemen & women at a greater risk of cancer		Minimizes exposure with sealed, self-contained cleaning process

**Solo Rescue®** cleans SCBA smokediver gear (steel, composite, rubber, fabric, plastic etc.) from residues of combustion gases, soot particles and toxins in just a few minutes and contributes to a significantly improved working environment for rescue service personnel.

**Developed In Close Contact With The Swedish Rescue Service** to meet the needs for cleaning contaminated equipment in the best way possible. Solo Rescue has a specially adapted interior and accessories to ease the cleaning of SCBA, gloves, boots and helmets.

**Compact, Easy And Efficient.** Fits in less than 11 ft<sup>2</sup> with a lower door that folds out, acting as a loading table when opened. Two efficient wash programs: Choose between a 2 minute cycle for gloves and helmets or a 5 minute cycle for SCBAs.

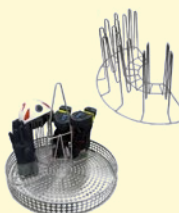
## Accessories



**INCLUDED**  
**Standard basket + Single/ Double Cylinder Holder.** The basket and SCBA holder for single and double cylinders, including masks can clean up to 15 SCBAs per hour.



**OPTIONAL**  
**Holder for Jumbo Cylinders.** Washes 2 cylinders at a time.



**Holder for Gloves, Helmets and Boots.** Basket fits 2 holders at a time for full capacity. At full capacity it can clean 160 gloves per hour, 60 pairs of boots per hour, or 100 helmets per hour.



# Dishmachines - Chemical Sanitizing Door Type



## WAREFORCE® I-X

**External Sump.** Single rack, convertible for straight-through or corner application, 90-second cycle, 37 racks per hour, 1.5 gallons per rack, self-draining stainless steel wash pump assembly, air gap, electromechanical timer, top mounted controls, delimer switch, low product indicator light, built-in chemical pumps and priming switches, auto start/stop, built-in stainless steel scrap accumulator.



## WAREFORCE® I-E

**Internal Sump.** Single rack, convertible for straight-through or corner application, 90-second cycle, 39 racks per hour, 1.02 gallons per rack, self-draining stainless steel wash pump assembly, air gap, electromechanical timer, top mounted controls, delimer switch, low product indicator light, built-in chemical pumps and priming switches, auto start/stop, built-in stainless steel scrap accumulator.



## WAREFORCE® I-E-LTH

**WAREFORCE® I-E with booster heater.**

## WAREFORCE® I HH

**Internal Sump.** 27" tall chamber, single rack, convertible for straight-through or corner application, 90-second cycle, 39 racks per hour, 1.61 gallons per rack, self-draining stainless steel wash pump assembly, air gap, electromechanical timer, top mounted controls, delimer switch, low product indicator light, built-in chemical pumps and priming switches, auto start/stop, built-in stainless steel scrap accumulator, internal sump.



## WAREFORCE® II

Dual rack straight, 74 racks per hour, 1.17 gallons per rack, self-draining stainless steel wash pump assembly, air gap, electromechanical timer, three selectable wash cycles, top mounted controls, delimer switch, low product indicator light, built-in chemical pumps and priming switches, auto start/stop, built-in stainless steel scrap accumulator.



## WAREFORCE® IIC

**Same specifications as the WAREFORCE® II,** except for corner installations. Please specify right front (R) or left front (L) door opening.

# Dishmachines - High Temperature Sanitizing Door Type



## WAREFORCE® HT-180

Single rack, field convertible for straight-through or corner application, electric tank heat, built-in booster heater with Sani-Sure™ final rinse system, 58 racks per hour, 0.89 gallons per rack, self-draining stainless steel wash pump assembly, universal timer, four selectable wash cycles, top mounted controls, delimer switch, auto start/stop, exhaust vent fan control, front stainless steel dress panel.



## WAREFORCE® HT-180 with Ventless & Energy Recovery

No vent hood required. Accommodates a wide range of water inlet temperatures and operates with only a cold water connection. Same specifications as WAREFORCE HT-180 with the exception of capacity. Cleans 39 racks per hour. Door interlock and pressure regulator included.



## WAREFORCE® HT-180 HH

27" tall chamber, single rack, field convertible for straight-through or corner application, electric tank heat, built-in booster heater with Sani-Sure™ final rinse system, 58 racks per hour, 1.36 gallons per rack, self-draining stainless steel wash pump assembly, dual counter-rotating lower wash arms, universal timer, four selectable wash cycles, top mounted controls, delimer switch, auto start/stop, exhaust vent fan control, front stainless steel dress panel.



## WAREFORCE® HT-180HH with Ventless & Energy Recovery

No vent hood required. Accommodates a wide range of water inlet temperatures and operates with only a cold water connection. Same specs as WAREFORCE HT-180HH with the exception of capacity. Cleans 37 racks per hour. Door interlock and pressure regulator included.



## Dishmachines - Glasswashers



### WAREFORCE® DG-E

**Chemical sanitizing.** Fill and dump with sustaining heater, 90-second cycle, 40 racks per hour, 1.16 gallons per rack, accommodates glasses and wares up to 11" high, functions as both a glasswasher and a dishwasher, easy access controls, electromechanical timer and two half-racks included. Rated by NSF as both a glasswasher and a dishwasher,



### WAREFORCE® DG-HT-E-SEER-S

**High temperature sanitizing.** Recirculating, 20 racks per hour, 0.65 gallons per rack, Soft Start, built-in booster heater with Sani-Sure™ final rinse system, double wall construction, pumped drain, universal timer, digital LED control panel, three selectable cycles, one peg and one combination rack included.



### WAREFORCE® CG

**Chemical sanitizing.** Rotary-type, cleans 1,200 glasses per hour, uses 10 gallons of water per hour, single switch operation, built-in chemical pumps and priming switches, hot or cold fresh water final rinse, convenient chemical storage and easy access scrap screens. Clockwise rotation.

### WAREFORCE® CG-115

115 Volt version of WAREFORCE® CG.



## Dishmachines - Conveyors



### WAREFORCE® 44 CONVEYOR

44" single tank dual-rated conveyor dishmachine with electric tank heat, 225 racks/hour and 0.68 gallons/rack for high temp, 209 racks/hour and 0.78 gallons/rack for chemical sanitizing, Adjust-A-Peak™ conveyor speed, EnergyGuard™ system, 25" standard height clearance, table limit switch, automatic fill, manual/automatic switch, whisper-quiet stainless steel pump assembly, exhaust vent fan control.

### WAREFORCE® 66 CONVEYOR

**Same specifications as WAREFORCE® 44**, plus 22" pre-wash section.

## Dishmachines - Undercounters



### WAREFORCE® UL30H

**Chemical sanitizing.** Fill and dump with sustaining heater, 24 racks per hour, 1.2 gallons per rack, double-wall construction, stainless steel wash pump assembly, pumped drain, electromechanical timer, delimer switch, low product indicator light, built-in chemical pumps and priming switches, auto fill, auto stop, one peg and one combination rack included.

### WAREFORCE® UH30-FND

**High temperature sanitizing.** Fill and dump, 24 racks per hour, 1.1 gallons per rack, built-in booster heater with Sani-Sure™ final rinse system, double-wall construction, stainless steel wash pump assembly, pumped drain, universal timer, delimer cycle, built-in chemical pumps and priming switches, auto fill, auto stop, one peg and one combination rack included.

# Housekeeping Tools



## MICROFIBER CLOTH

16 X 16 300 gram weight microfiber cloth. Comes in green, red, blue, and yellow colors.

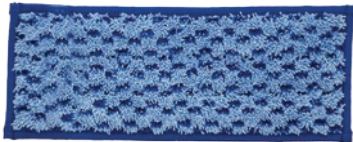
---



## MICROFIBER DUSTER

Flexible duster with 12 inch handle and Wave microfiber sleeve. Sleeve has 2 in long strands to grab and lock dust. Green and white in color.

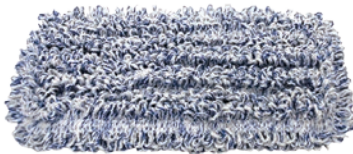
---



## MICROFIBER SCRUB MOP

10 inch microfiber mop pad with pocket backing. Its short loop microfiber and poly-microfiber square block scrubbers make quick work of tough messes. Color coded tabs for easy selection.

---



## WAVE MOP

10 X 5 inch microfiber mop pad made with wave material and hook and loop backing. For use with trowel and wall wash frames. Comes in blue and red colors.

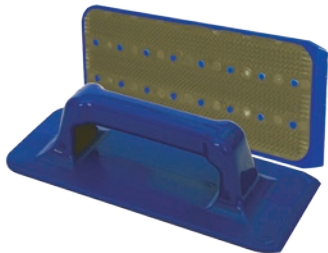
---



## WASH WALL FRAME

9 X 4 inch mop frame with swivel. Hook and loop backing. Blue in color.

---



## TROWEL

9 X 4 inch hand trowel with handle and scrapper edge. Hook and loop backing. Blue in color.

---



## MOP HANDLE

Aluminum telescopic mop handle with gray grip, 39.5 to 72 inches in length. Fits pocket, tab, hook wall wash and MFlex frames.

PROBLEND™

**BEYOND CLEAN.**

ProBlendSolutions.com

———— member of the PROBLEND™ NETWORK ————